

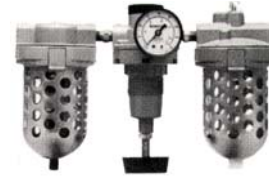
# Air Hoist Accessories

For more information contact:  
**American Crane & Equipment Corp.**  
**Authorized Distributor**  
**Tel: 877-503-2972**  
**Fax: 484-945-0430**  
**sales@americancrane.com**  
**www.americancrane.com**



## FILTER-LUBRICATOR UNIT

Air hoists must have a supply of clean, lubricated air for their operation. A filter and lubricator must be installed in the air supply line, as close as practical to the hoist. The recommended operating air pressure for all capacities of BUDGIT® air hoists is 90 psig. When air line pressure exceeds 115 psig, it is required that a pressure regulator be provided in the supply line to maintain proper pressure.



### Filter - Lubricator Units

Catalog #	Inlet / Outlet Size	Bowl Size.	Shipping Weight
	in	oz.	lbs.
902960	3/8	11	8
902961	1/2	11	8
902962	3/4	24	12
902963	1	24	12

### Filter - Regulator - Lubricator Units

Catalog #	Inlet / Outlet Size	Bowl Size.	Shipping Weight
	in	oz.	lbs.
902966	3/8	11	14
902967	1/2	11	14
902968	3/4	24	18
902969	1	24	18



## BULLARD HOOKS

All hoists are furnished as standard with hooks equipped with hook latches. Bullard Hooks with rugged cast swing gate locking member that provides greater assurance of load containment are available at additional cost. Spark resistant Bullard Hooks are not available.



## REDUNDANT SUPPORT

Hoist suspension redundant support for Series 2200 hoist is available for additional cost. This redundant support features a cable that inserts through the hoist frame and around the initial support.



## PENDANT THROTTLE CONVERSION KIT

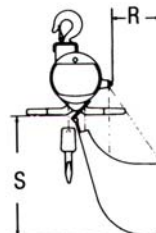
Kits for converting the pull cord Series 2200 BUDGIT® Air Hoist to pendant throttle operation has standard 6-foot pendant hose assembly. Longer hose assemblies available. Order Catalog No. 2269. Shipping weight is 8 pounds.

## CHAIN CONTAINERS

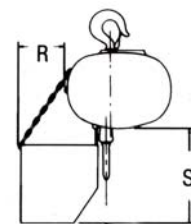
Chain containers provide an ideal means for eliminating hanging tail chains. They are easily installed and accept the chain in such a way that chains tend not to kink or twist. State codes are more frequently calling for use of chain container with each hoist.

### Chain Container for Series 2200 Air Hoist

Catalog #	Chain Type	Maximum Lift		Shipping Weight	Dimension	
		1/4, 3/8, 1/2 Ton	3/4, 1 Ton		R	S
		ft	ft	lbs.	in	in
902631	Link Chain	25	12	4-1/2	4-1/2	12
902635	Link Chain	45	22	9	4-1/2	17
902634	Link Chain	25	12	5	4-1/2	12
902636	Spark Resistant	45	22	10	4-1/2	7
902632	Roller Chain	15	-	6-1/2	9	17-1/2
902633	Roller Chain	30	15	11	12-1/2	22-1/4



Series 2200



Series 6000

### Chain Container for Standard Series 6000 Air Hoist

Catalog #	Maximum Lift			Shipping Weight	Dimension	
	1 Ton	2 Ton	3 Ton		R	S
	ft	ft	ft	lbs.	in	in
905434	15	do not use	do not use	4	4-1/2	10
905435	30	15	10	8	4-1/2	15
905436	45	22	15	10	4-1/2	19
905437	60	30	20	14	4-1/2	23
905438	75	37	25	15	4-1/2	28
905439	90	45	30	16	4-1/2	33

### Chain Container for Spark Resistant Series 6000 Air Hoist

Catalog #	Maximum Lift			Shipping Weight	Dimension	
	1/2 Ton	1 Ton	2 Ton		R	S
	ft	ft	ft	lbs.	in	in
905444	15	do not use	do not use	4	4-1/2	10
905445	30	15	10	8	4-1/2	15
905446	45	22	15	10	4-1/2	19
905447	60	30	20	14	4-1/2	23
905448	75	37	25	15	4-1/2	28
905449	90	45	30	16	4-1/2	33

## AIR HOSE ASSEMBLY

Assembly requires Catalog No. for both hose and fittings

### Air Supply Hose

Catalog #	ID	OD	Braid	Max. PSI	Width
	in	in			ft
901610	1/2	15/16	1	200	0.33
901611	3/4	1-1/4	2	225	0.52
901612	1	1-1/2	3	200	0.65

### Fittings\*

Male Swivel at One End -  
Standard Male at Opposite End

Catalog #	Hose ID	Thread Size M-NPT
	in	in
901614	1/2	3/8
901615	3/4	3/4
901616	1	3/4

\* Fitting installed on above hose.

### Fittings with Quick Disconnect\*

Quick Disconnect on One End -  
Standard Male at Opposite End

Catalog #	Hose ID	Thread Size M-NPT
	in	in
901618	1/2	3/8
901619**	3/4	3/4
901620**	1	3/4

\* Fitting installed on above hose.

\*\* 3/4 NPT Quick disconnect is without check valve.



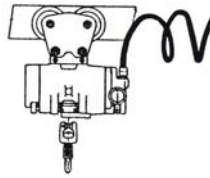
### AIR HOSE TROLLEYS CATALOG NO. 254

(For use with Series 2200 and Series 6000 Air Hoists)

These trolleys are used to support air hose and are installed on the same track as a hoist. Hose clamp swivels and will fit 5/8 to 1-1/2 inch diameter hoses. Shipped from factory in cartons of six only.

### RECOIL AIR HOSE WITH FITTING

For application where air hose trolleys with looped hose is impractical; coil type self-storing hose is recommended.



### Self Storing Air Hose with Fittings

Catalog #	Hose Size x Working Length	Fitting Each End
	I.D. in x ft	
901621	1/2 x 15	3/8 NPTF Male Swivel Fittings
901622	1/2 x 25	
901624	3/4 x 15	3/4 NPTF Male Swivel Fittings
901625	3/4 x 25	
901626	3/4 x 50	

### Nylon Coated Cable with Eyebolt Fittings Each End for Supporting Recoil Air Hose (Supports by Others)

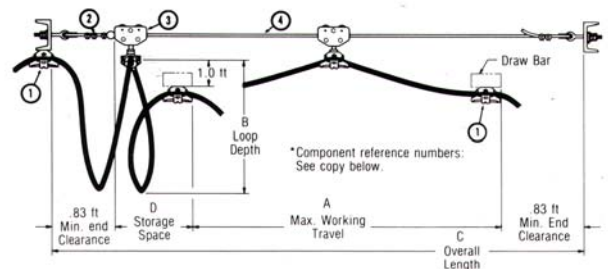
Catalog #	Length
	ft
901629	25
901630	50

## WIRE ROPE FESTOON SYSTEMS FOR AIR SUPPLY HOSE

System include (note numerical key in illustration at right): (1) 2 end clamp assemblies; (2) 1 hardware kit consisting of 2 eye-bolts, 5 clamps and 1 ball stop; (3) Intermediate carriers - see specified quantity in last column of chart below; (4) Nylon covered wire rope per required length.

### Hose System (from 0.91" to 1.25" O.D.)

Catalog #	A	B	C	D	Maximum Combine Cable Wt.	Clamp Distance	No. of Carriers (item 3)
	ft	ft	ft	ft	lbs. / ft	ft	
901601	16	3	18.5	0.84	1.31	6.87	2
	21	4	23.5	0.84	1.01	8.87	2
901602	28	3	31.1	1.40	1.31	6.87	4
	37	4	40.1	1.40	1.01	8.87	4
901603	40	3	43.6	1.97	1.31	6.87	6
	52	4	55.6	1.97	1.01	8.87	6



### NOTE:

Festooning hose and connectors are not included in the system.