



# Magnetek Material Handling IMPULSE®•LINK 4.1 WDS

---

Wireless Diagnostic System

---

## Instruction Manual



May, 2008  
Manual Part Number: 140-10330  
©Copyright 2008 Magnetek Material Handling

©2008 MAGNETEK MATERIAL HANDLING

All rights reserved. This notice applies to all copyrighted materials included with this product, including, but not limited to, this manual and software embodied within the product. This manual is intended for the sole use of the persons to whom it is provided, and any unauthorized distribution of the manual or dispersal of its contents is strictly forbidden. This manual may not be reproduced in whole or in part by any means, whatsoever, without the expressed written permission of MAGNETEK.

IMPULSE•LINK 4.1 Software is copyrighted by Magnetek. All rights reserved.

# Table of Contents

Chapter 1 - Introduction .....	4
Overview .....	4
System Requirements .....	6
Chapter 2 - Installation .....	7
Software Installation .....	7
Installing your Hardware Key .....	8
Importing your Drive Profiles .....	9
Creating Communication Profiles using the Wizard .....	10
Hardware Installation .....	11
Wiring the Base Unit .....	11
Wiring the Remote Unit .....	12
Chapter 3 - Navigation .....	15
Chapter 4 - Parameter Maintenance .....	19
Read From VFD .....	19
Write to VFD .....	19
Parameter File Display .....	20
Modifying Parameters .....	20
Parameter File Comparison .....	22
Custom Defaults .....	23
Security / Password Protection .....	24
Chapter 5 - Monitor / DataLogger Function .....	25
Monitor .....	25
DataLogger .....	25
Fault Reset .....	29
Chapter 6 - Additional Menu Features .....	31
Print Preview .....	31
Parameter File Conversion .....	32
Viewing Parameters .....	33
Copying to the Clipboard .....	33
Chapter 7 - Troubleshooting .....	34
Drive Faults References .....	34
Communication Error References .....	35
Communication Profile Test .....	36
Show Error Log .....	36
Chapter 8 - Appendices .....	37
Appendix A: Serial Wiring for IMPULSE LINK WDS Base Unit .....	37
Appendix B: Serial Wiring for IMPULSE LINK WDS Remote Unit .....	38
Appendix C: Serial Wiring for IMPULSE G+/VG+ Series 2 .....	40
Appendix D: Quick Reference .....	41

# Warning and Caution

## DISCLAIMER OF WARRANTY

Magnetek's Electromotive Systems, hereafter referred to as Company, assumes no responsibility for improper programming of a drive that resulted from use of this software. This software should only be used by a trained technician who has read and understands the contents of this manual. Normal use of this software may result in the drive parameters becoming modified. Improper programming of a drive can lead to unexpected, undesirable, or unsafe operation or performance of the drive. This may result in damage to equipment or personal injury. Company shall not be liable for economic loss, property damage, or other consequential damages or physical injury sustained by the purchaser or by any third party as a result of the use of this software. Company neither assumes nor authorizes any other person to assume for Company any other liability in connection with the sale or use of this software.

## WARNING

1. Read this user manual in its entirety before installing IMPULSE®•LINK 4.1Wireless Diagnostic System(WDS)or operating the IMPULSE®•G+/VG+ Series 2, IMPULSE®•G+/VG+ Series 3 , IMPULSE®•P3 Series 2, and/or Omni Pulse DDC Variable Frequency Drives (VFD).
2. DO NOT connect or disconnect wiring, or perform signal checks while the electrical power is turned ON.
3. Improper programming of a drive through the use of this software can lead to unexpected, undesirable, or unsafe operation or performance of the drive.

*Failure to observe these and other precautions indicated in this manual will expose the user to high voltages, resulting in serious injury or death. Damage to equipment may also occur.*

## CAUTION

## NOTICE

No patent liability is assumed with respect to the use of the information contained herein. Moreover, Magnetek is constantly improving its high quality product; therefore, the information contained in this manual is subject to change without notice. Every precaution has been taken in the preparation of this document. Nevertheless, Magnetek assumes no responsibility for errors or omissions. Neither is any liability assumed for damages resulting from the use of the information contained in this publication.

# Chapter 1 - Introduction

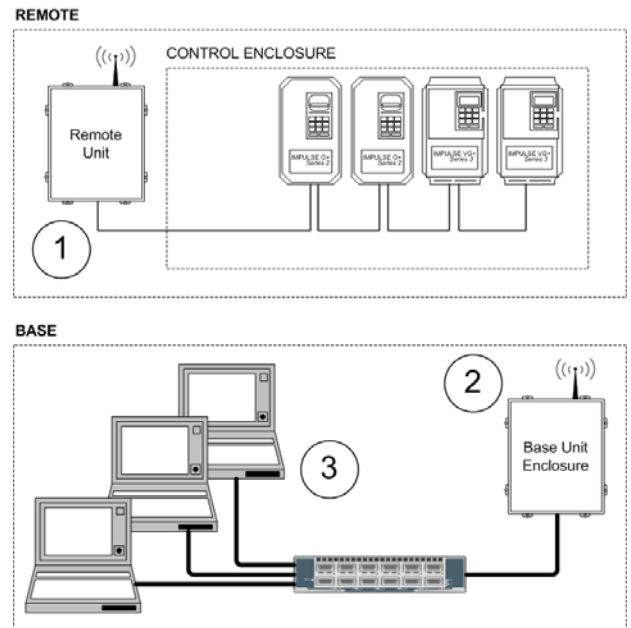
## Overview

IMPULSE•LINK 4.1 Wireless Diagnostic System (WDS) is a user friendly, Windows® based, interactive drive communication software and wireless hardware package. It is designed for communication from your PC over your company-wide network to the following Magnetek's drives:

- IMPULSE•G+/VG+ Series 2
- IMPULSE•G+/VG+ Series 3
- IMPULSE•P3 Series 2
- Omni Pulse DDC

IMPULSE•LINK 4.1 WDS consists of:

1. A remote unit consisting of a wireless modem, which is wired to your IMPULSE Drives and communicates wirelessly to the base unit.
2. A base unit consisting of a wireless modem connected to a PC using company-wide network.
3. IMPULSE•LINK 4.1 WDS Software that allows access to all of the cranes in your facility from one location. A hardware key must be present in the computer's USB port to enable the software to access the drives.



### The Wireless Base Unit

**Model number:** WDS-EBASE

**Description:** NEMA 4 junction box (12" x 10") consists of a 120-volt standard power outlet, Ethernet wireless modem, externally mounted antenna to the junction box, Ethernet receptacle built-in to the junction box, and terminal block. Along with the NEMA 4 junction box, is a 6' crossover cable with Ethernet receptacle.

### The Wireless Remote Unit

**Model number:** WDS-SREMOTE

**Description:** NEMA 4 junction box (12" x 10") consists of a 120-volt standard power outlet, wireless modem, externally mounted antenna to the junction box, and terminal block. Along with the NEMA 4 junction box, the remote unit comes with 50' of twisted shielded cable to connect the drives to the modem.

### Software and Hardware Key

**Model number:** WDS-SWARE

**Description:** CD containing the IMPULSE•LINK 4.1 WDS software, customer's drive profiles, and the hardware key.

### Remote Antenna Kit

**Model number:** WDS-ANTENNAKIT

**Description:** Hardware and accessories to remotely mount the WDS antenna (up to 10 feet from WDS Wireless Remote Unit).

## SPECIFICATIONS

### Wireless Base Unit

Enclosure:	NEMA 4
Dimension (H x W x D):	12 x 10 x 5 inches (30.5 x 25.4 x 12.7 cm)
Temperature:	32 – 104 °F (0 to 40 °C)
Humidity:	0-95% Non-condensing
Voltage:	120 VAC single phase, 0.8 Amps
Wattage:	1 Watt
Communication:	Ethernet TCP/IP 10/100 Base-T
Frequency:	900 MHz, Frequency Hopping, Spread spectrum

### Wireless Remote Unit

Environment:	NEMA 4
Dimension (H x W x D):	12 x 10 x 5 inches (30.5 x 25.4 x 12.7 cm)
Temperature:	32 – 104 °F (0 to 40 °C)
Humidity:	0-95% Non-condensing
Voltage:	120 VAC single phase, 0.8 Amps
Wattage:	1 Watt
Communication:	RS485 4-wire, 120 $\Omega$ Nominal Characteristic Impedance (Belden 9842)
Frequency:	900 MHz, Frequency Hopping, Spread spectrum
Range:	300 feet (91.4 meters) line-of-sight

# System Requirements

## Supported Drives

IMPULSE•LINK 4.1 WDS supports the following Magnetek drives:

- IMPULSE•P3 Series 2
- IMPULSE•G+/VG+ Series 2
- IMPULSE•G+/VG+ Series 3
- OmniPulse DDC

**Note:** Although the IMPULSE Series 2 drives are supported, a CMG5M communication board (part #140-10261) needs to be installed on each G+ or VG+ Series 2 drive.

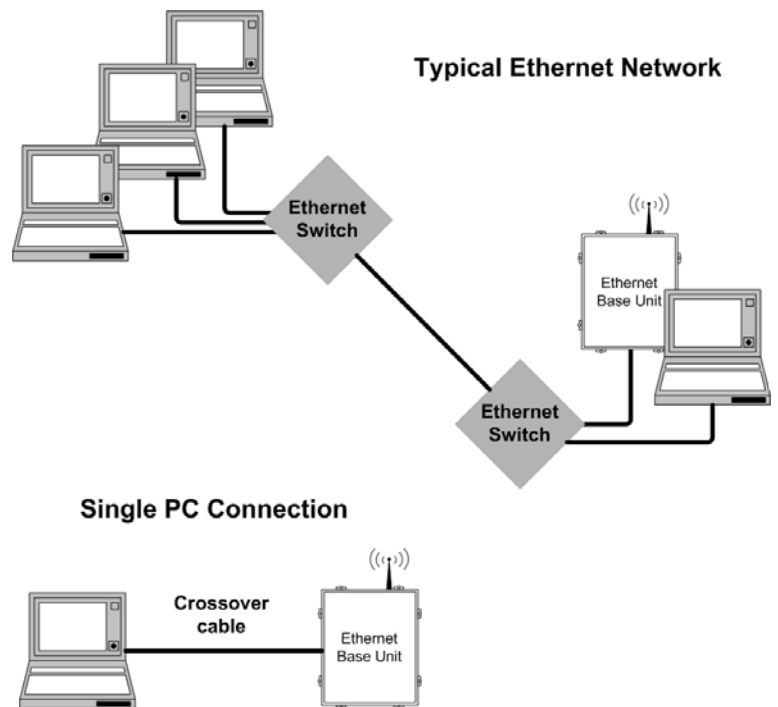
## PC Requirements

1. Pentium class or equivalent 500MHz processor or better
2. 256 MB RAM or better
3. Minimum of 100 MB free hard-disk space available
4. Windows 98 SE, 2000, XP or Vista operating system.
5. Available USB or RS232 port.

## Network Requirements

If specified, customer-supplied IP addresses can be configured into each base unit during factory setup. A tool, the *WDS Configurator*, is also included on the CD to assist in scanning and configuring the Impulse Link 4.1 WDS Modems. Although multiple users (computers) may have access to the drives on an Ethernet network, only one person can be accessing a particular bay at a time using the WDS Wibu key.

**Note:** The maximum Ethernet cable length between devices is 328 feet (100 meters). The Ethernet connector type is RJ-45.

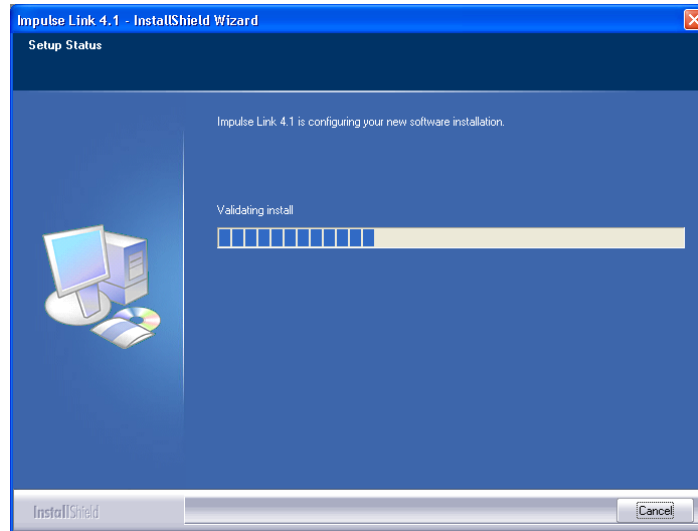


# Chapter 2 - Installation

## Software Installation

The IMPULSE•LINK 4.1 WDS CD contains: the IMPULSE•LINK 4.1 WDS Software and the communication profiles for the IMPULSE Drives used in your specific application.

- To run the IMPULSE•LINK 4.1 WDS Setup, put the IMPULSE•LINK 4.1 WDS CD into your CD drive.  
(Run setup.exe from the CD if it does not start automatically)
- Select the default choices during installation.

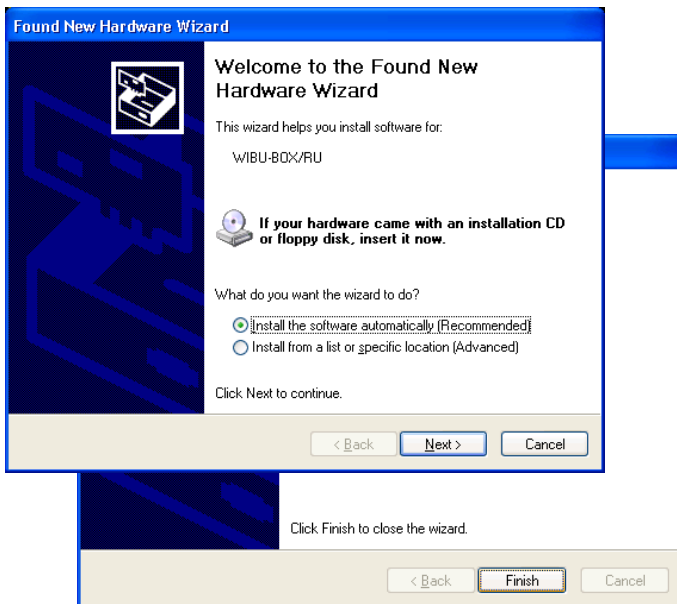




## Installing your Hardware Key

Insert your WDS Wibu hardware key into any USB port on your Windows will detect the hardware and begin installing the necessary

computer drivers.

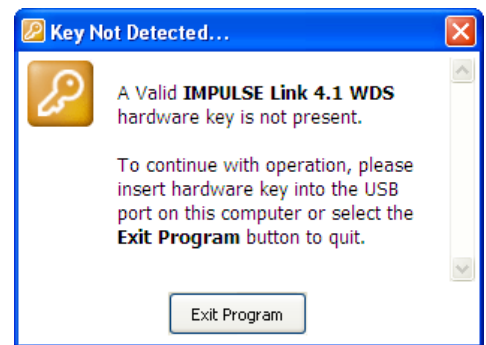


Select **Next**, leaving the *(Recommended)* choice selected. Wait while the hardware is installed. Windows will find the correct driver and install it.

Click **Finish** to close the *Completing the Found New Hardware Wizard* dialog.



**Note:** If you try to run IMPULSE Link 4.1 WDS and the hardware key is not inserted into a USB port on the computer, you will receive the following error message. Also, if you are running IMPULSE Link 4.1 WDS and remove the hardware key, the same message will appear until the key is re-inserted into the USB port.



## Free Updates, Patches

Additional features and bug fixes may be available from time to time. These may be downloaded from the Magnetek Material Handling website at [www.magnetekmh.com/downloads.htm](http://www.magnetekmh.com/downloads.htm).

## Software Removal

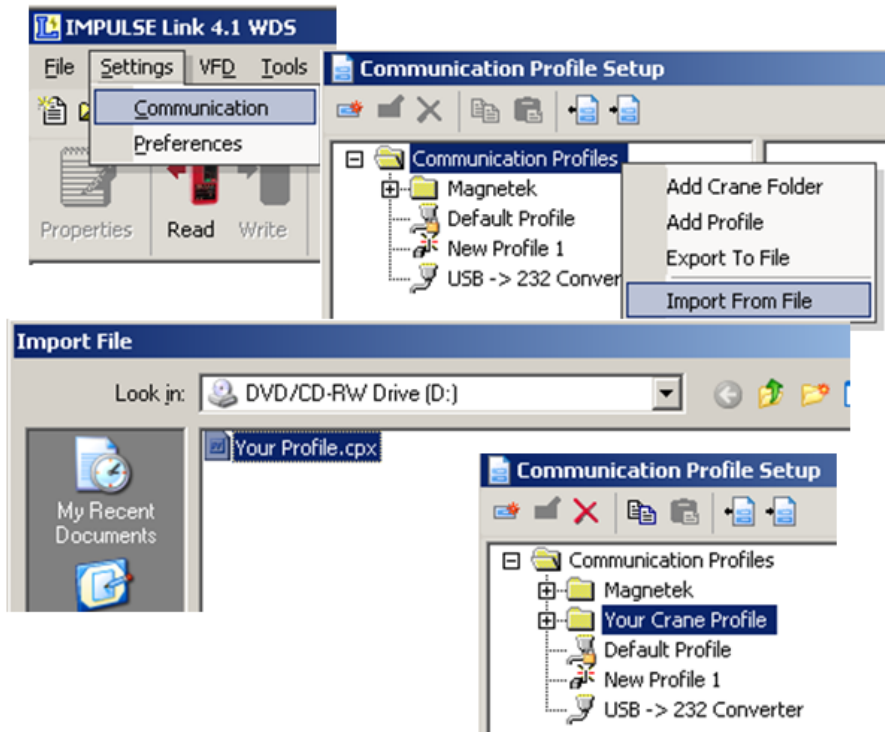
To remove the IMPULSE•LINK 4.1 WDS Drive Interface Software, open the Control Panel's Add/Remove Programs dialog box, double-click the IMPULSE•LINK 4.1 WDS entry and choose Remove All from the IMPULSE•LINK 4.1 WDS Setup dialog box.

## Importing your Drive Profiles

When you receive IMPULSE•LINK 4.1 WDS, your profiles have been pre-configured for you and reside on the installation CD. When IMPULSE•LINK 4.1 WDS is installed, the profiles will be imported automatically for you. Run IMPULSE•LINK 4.1 WDS by double-clicking the “L” icon found on your desktop. A splash screen will appear for a few seconds while the subsystem loads.

To import the profiles manually:

1. Select “Communication” from the Settings Menu.
2. Right-Click on the “Communication Profiles” Folder and select “Import From File”
3. Browse to your CD-ROM drive, select the files (\*.CPX) and choose “Open”.
4. There will be a profile for each drive (Crane 1 Hoist, Crane 1 Bridge, etc.)
5. After the profiles are imported, select “OK” to save your communication profiles.

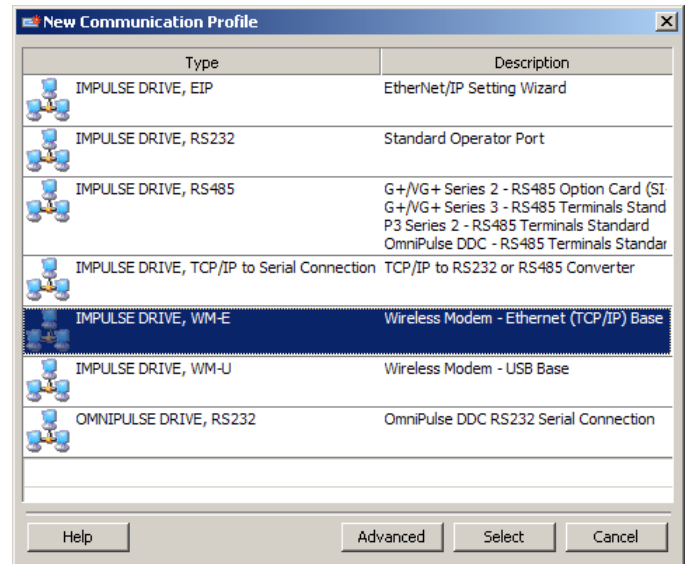


## Creating Communication Profiles using the Wizard

If you need to create a communication profile, there is a wizard to assist you. In the Settings Menu, click “Communication”, and then Right-click on the folder “Communications Profile” and choose “Add Crane Profile”.

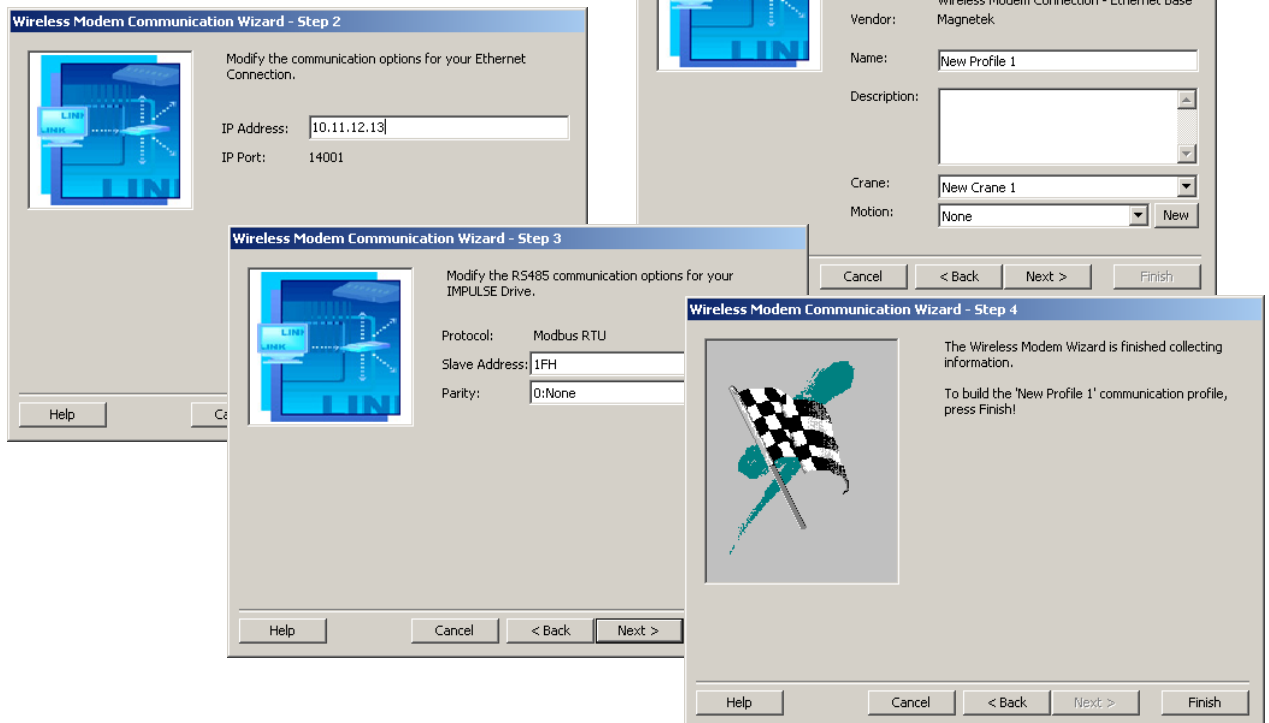


Enter the name of your crane for the folder. Right-click on this new folder and choose “Add Profile”. You will then see the following screen appear:



Highlight the IMPULSE DRIVE, WM-E for the standard Wireless Ethernet Modem, and then click “Select”. The wizard will then take you through the following four steps to set up a new communication profile.

- Step 1: Name, Description, Crane and Motion
- Step 2: IP Address
- Step 3: Slave Address (01H to 1FH) and Parity (0:No)
- Step 4: Finish

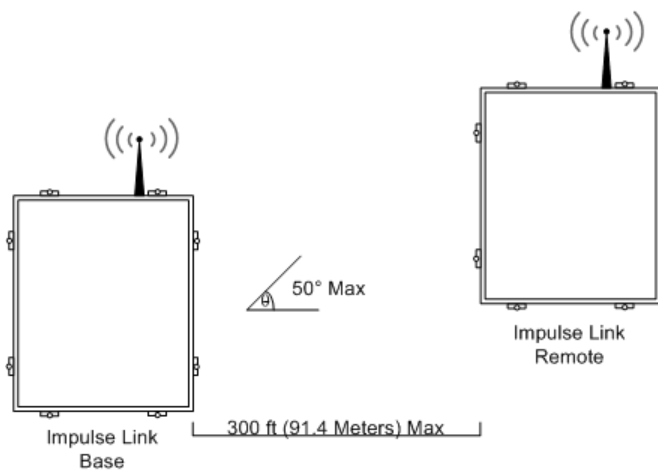


## Hardware Installation

### Mounting

Be sure that the base and remote units are mounted in a location protected against the following conditions:

- Extreme cold or heat. Use within the ambient temperature range of:
  - Base Unit 32° to 104°F (0° to 40°C)
  - Remote Unit 32° to 104°F (0° to 40°C)
- Direct sunlight
- Direct rain, moisture
- High humidity
  - 0 to 95% Non-condensing
- Oil sprays, splashes
- Salt spray
- Corrosive gases

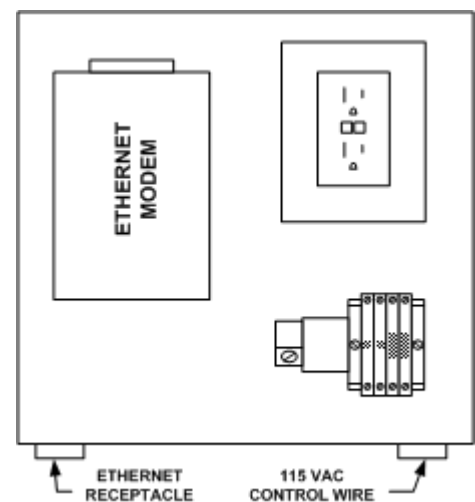
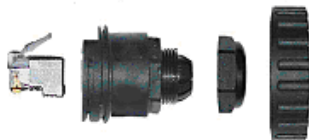


The base and remote units should be mounted on a flat, non-flammable vertical surface using four mounting screws. Line of sight should be maintained from both the remote unit's and base unit's antennas to avoid communication dropouts.

### Wiring the Base Unit

The Base Unit contains an Ethernet wireless modem. The Base Unit has an Ethernet receptacle at the bottom of the enclosure. A 6' cross-over cable with Ethernet connector is provided with the Base Unit. This 6' crossover cable can simply be plugged into the Ethernet port on a computer and then the opposite end can be plugged into the Base Unit's Ethernet receptacle.

The Ethernet field connector kit (shown below) provides strain relief and can be cut-off from the 6' cross-over cable and connected to an alternative cable of desired length when connecting to an Ethernet switch or hub.



At the bottom, right of the Base Unit enclosure is a cable grip for running the 115V control power wiring. The Ethernet receptacle is built in to the bottom left of the enclosure. Ethernet and control power wiring should never be run together.

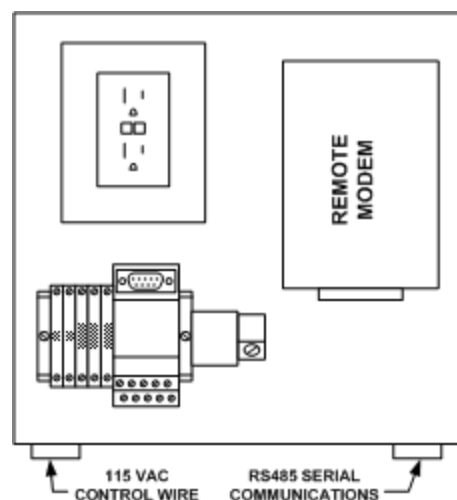
The typical wiring diagram for the Base Unit can be found in Appendix A.

## Wiring the Remote Unit

The Remote Unit contains two cable grips on the bottom of the enclosure. It is important that control and serial wiring are run separately. The Remote Unit comes with 50 feet of twisted shielded cable (Belden 9842) for wiring to your drives.

**IMPULSE•G+/VG+ Series 2 drive:** The IMPULSE G+ and VG+ Series 2 require a CMG5M serial option board. Connect multiple IMPULSE• G+/VG+ Series 2 drives, using terminals 1–4 on the CMG5M board as shown in Appendix B.

**OmniPulse DDC drive:** The OmniPulse DDC supports the 2-wire RS485 interface only.



## Wiring to the Drives

When wiring the IMPULSE•P3 Series 2, IMPULSE•G+/VG+ Series 3 or OmniPulse DDC drives, the serial communication terminals are located on the control interface board.

1. Locate the correct terminals.
2. Use the twisted shielded wire provided with your *Remote Unit* for connecting as indicated in the table below.

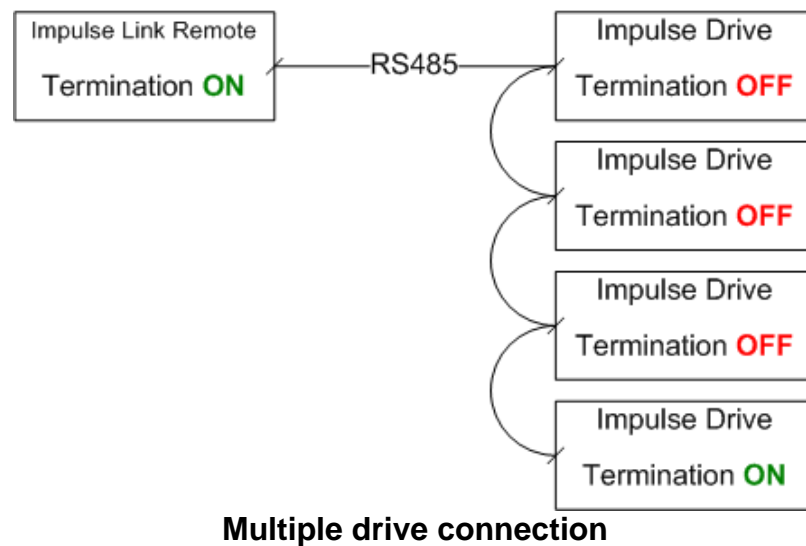
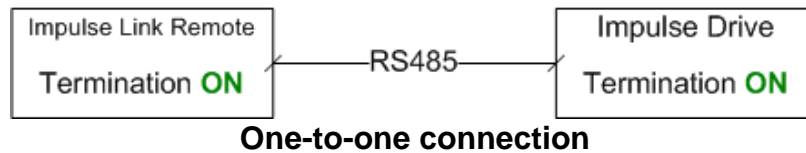
Wireless Remote Unit Terminal Block	IMPULSE•G+/VG+ Series 2 CMG5M Board Terminals	IMPULSE•G+/VG+ Series 3 and IMPULSE•P3 Series2 Control Terminals	OmniPulse DDC	Description
8 or R+	1	R+	T1-9 – RS485B (T/R+)	RS-485 signal
2 or R-	2	R-	T1-8 – RS485A (T/R-)	RS-485 signal
7 or S+	3	S+	N.C.	RS-485 signal
3 or S-	4	S-	N.C.	RS-485 signal
Shield	TC2	TB4	Chassis Ground	Shield connection

3. Set the terminating resistor.

*Note:* Reference the drawings included in the WDS Remote unit or the wiring diagrams in the Appendix of this document for more information.

## Terminating Resistor

There is a dipswitch that is used to connect a terminating resistor (120 Ohms) to the serial communications for proper network balancing. (See next page for location). This terminating resistor needs to be ON at the beginning and end of the line for the RS485 communications. The Impulse Link Remote Unit has the terminating resistor enabled from the factory. Use a daisy-chain wiring configuration for connecting multiple drives. The terminating resistor should be turned ON, for one-to-one connections or on the last drive, when multiple drives are wired in parallel. Below is an overview of the daisy-chain configuration.

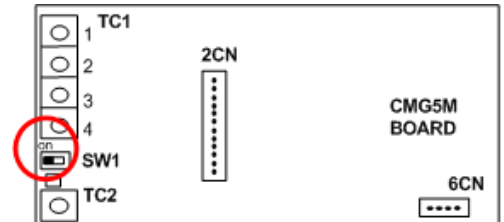


## Locating the Terminating Resistor

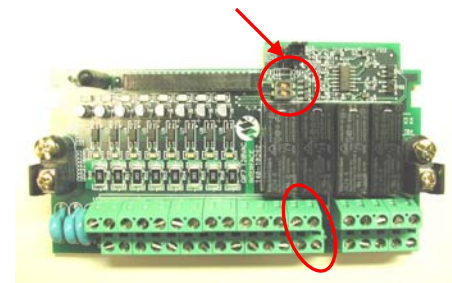
The following diagrams illustrate the location of the terminating resistor for each family of drives.

**IMPULSE•G+/VG+ Series 2:** Dipswitch SW1 is found on the left side of the CMG5M RS485 option card.  
(Notice the 'ON' position is on the left side of the switch.)

*Note:* A typical wiring diagram for the IMPULSE•G+/VG+ Series 2 drives is shown in *Appendix C*.

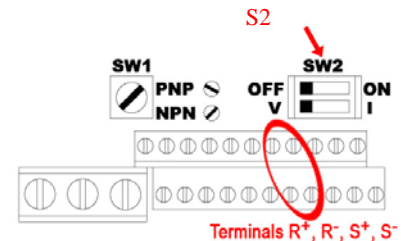


**IMPULSE•G+/VG+ Series 3:** Dipswitch S1 is located on the interface board, as shown to the right.  
(Notice the 'ON' position of S1 is with the switch to the right side.)



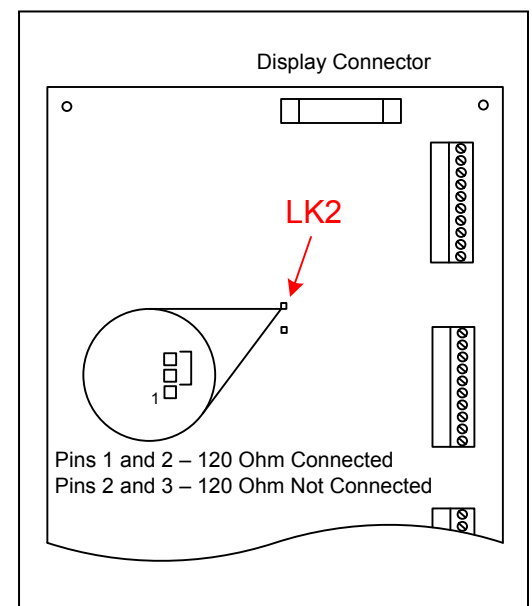
Terminals R+, R-  
S+, S-

**IMPULSE•P3 Series 2:** Dipswitch SW2 is located above the control terminals, as shown to the right.  
(Notice the 'ON' position SW2 is with the switch to the right side.)



Terminals R+, R-, S+, S-

**OMNI•PULSE•DDC:** Terminal jumpers LK2, are located near the center of the control board. With the jumper on pins 1 and 2, the terminating resistor is connected. With the jumper on pins 2 and 3, the terminating resistor is not connected.



## Chapter 3 - Navigation

The IMPULSE•LINK 4.1 WDS Software is a Windows-based software with easy to use menus and drop-down functions. The user is able to access utilities for uploading/downloading parameters, comparing parameters, saving parameters to a file, accessing the DataLogger function and more from the easy to navigate toolbar. The main screen allows the user to access more commonly used features at click from the main screen.

**New** – Displays the controller properties dialog to create a new factory default parameter set, based on the drive type, software number, model, and kVA.

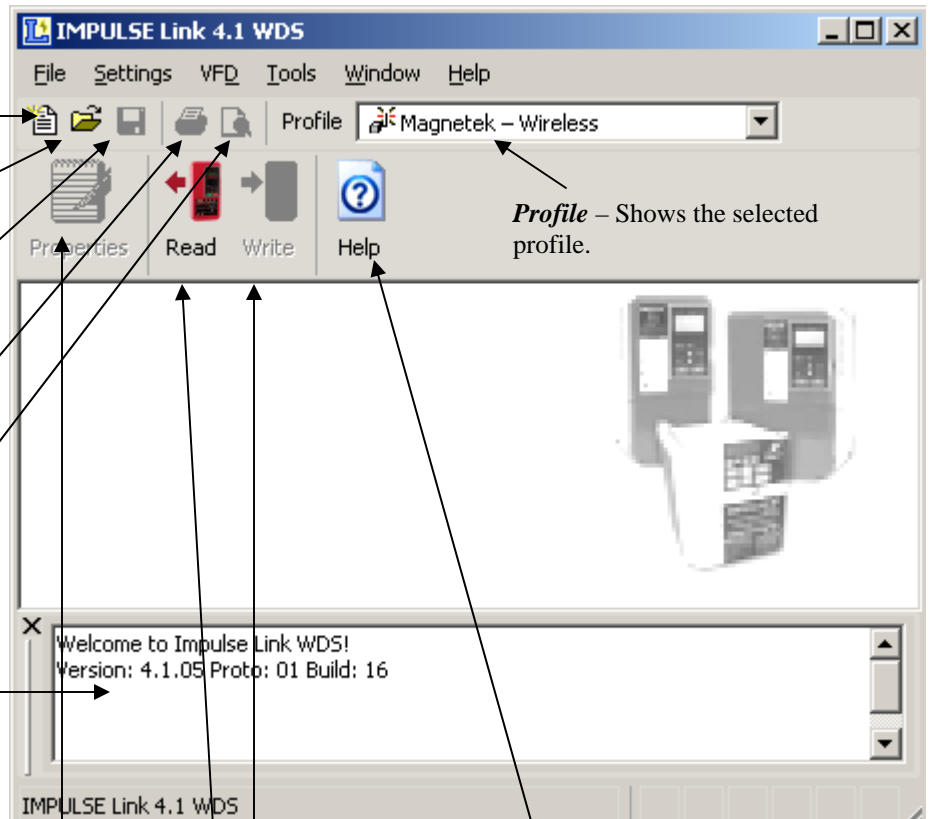
**Open** – Opens or finds a file containing a parameter set for a specific drive type and software number.

**Save** – Saves the active file with its current file name and location.

**Print** – Prints the active parameter set. Select Print options, in the Print window/dialog box.

**Print Preview** – Shows how a file will look when you print it.

**Show Error Log** – shows the status of IMPULSE•LINK 4.1 WDS.



**Profile** – Shows the selected profile.

**IMPULSE LINK Help** – Provides information on communication profile settings and troubleshooting, complete Index of VFD fault codes, and a Search function.

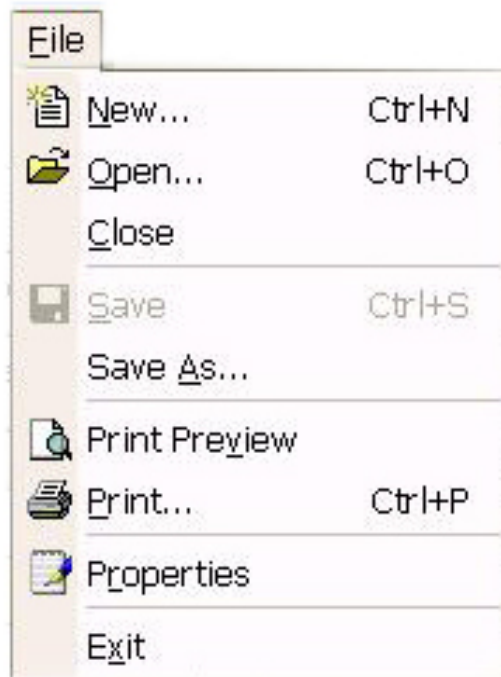
**Write to VFD** - Saves all parameter values from memory to the VFD.

**Read from VFD** - Loads all parameter values from the VFD to memory.

**Properties** – Displays the properties box to view the properties of the active file.



The following gives a brief summary each of the functions that can be accessed from the navigation toolbar.



**New** – Displays the controller properties dialog to create a new factory default parameter set, based on the drive type, software number, model, and kVA.

**Open** – Opens or finds a file containing a parameter set for a specific drive type and software number.

**Save** – Saves the active file with its current file name and location.

**Save As** – Saves the active file with a different file name or location.

**Print Preview** – Shows how a file will look when you print it.

**Print** – Prints the active parameter set. Select Print options, in the Print window/dialog box.

**Properties** – Displays the properties box to view the properties of the active file.

**Exit** – Closes this program after prompting you to save any unsaved files.



**Communication** – Allows communication profiles to be added, removed, edited, copied, imported and exported.

**Preferences** – IMPULSE•LINK 4.1 WDS settings for access level.

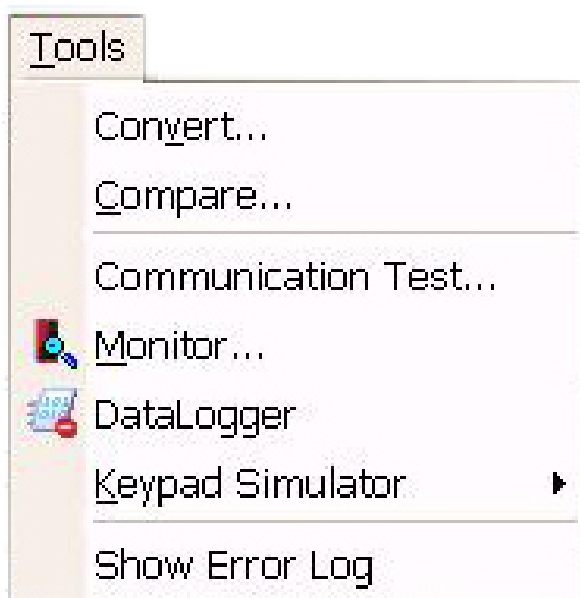
**Custom Defaults** – Contains screen for maintaining “custom default” parameter files.



**Write Flash** - Allows a binary file to be written to VFD flash memory. (FACTORY USE ONLY)

**Read from VFD** - Loads all parameter values from the VFD to memory.

**Write to VFD** - Saves all parameter values from memory to the VFD.



**Convert** – Allows for parameter files to be converted from one software/Flash ID to another (must be within the same drive serie).

**Compare Parameters** - Allows for comparison of sets of parameter files.

**Communication Test** – performs a communication test with the VFD.

**Monitor** – Displays a select number of monitor parameters (U-parameters), updated continuously.

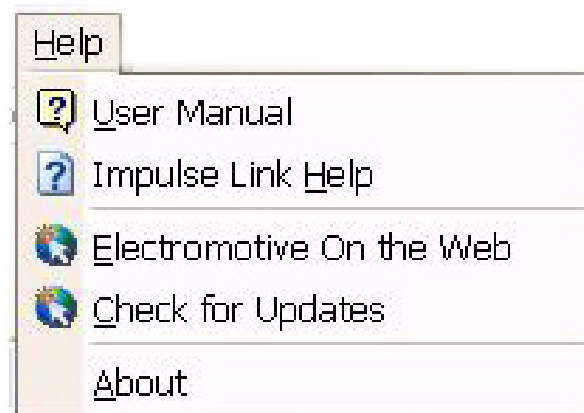
**DataLogger** – Opens the DataLogger function (described in more detail in Chapter 5).

**Keypad Simulator** – Emulates the keypad and allows for navigating the keypad menu remotely (this is not available unless hardwired to the keypad port).

**Show Error Log** – shows the status of IMPULSE•LINK 4.1 WDS.



**Window** - Allows for easy parameter window recall and organization. All open files are enumerated at the bottom of this menu for switching between files more easily.



**Users Manual** – Displays the User Manual. (Acrobat Reader must be installed)

**IMPULSE LINK Help** – Provides information on communication profile settings and troubleshooting, complete Index of VFD fault codes, and a Search function.

**Electromotive on the Web** – provides a link to the Magnetek Material Handling website.

**Check for Updates** – provides a link to the download software page of the website that offers updates.

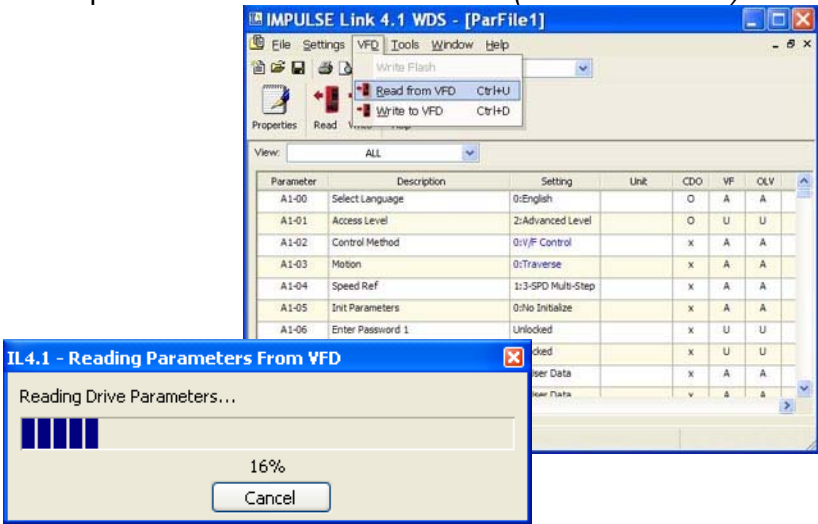
**About** - Displays the version number of this Electromotive Systems product, copyright and legal notices.

# Chapter 4 - Parameter Maintenance

IMPULSE•LINK 4.1 WDS software provides flexibility in programming, uploading, downloading, and saving parameters. With full parameter descriptions and visual programming, modifying parameters from your computer has never been easier.

## Read From VFD

This function allows you to load the parameter values from the drive's memory. This can be accomplished through the 'VFD' drop down menu or the 'Read' Icon (as shown below).



## Write to VFD

This function saves all parameter values from memory to the VFD. This can be accomplished via the drop down on the 'VFD' menu or using the 'Write' Icon as shown here. Writing to the VFD may result in undesirable operation of your crane, causing **danger, personal injury or death!** To proceed with the write to VFD function you will need to accept that you acknowledge the warning message as shown here. Once you have checked the *I Accept* button, the *Continue write to VFD* button will be available.



## Parameter File Display

### Parameter Value Text Color

#### Modified Constant

A parameter with **blue** text implies that its value is different than its default setting.

- This list should match the modified constants list in the drive, with the exception of A1 parameters.

#### Read-Only

A **grayed-out**, highlighted parameter implies that it cannot be modified.

- The Access Level of the current parameter set is lower than what is needed for this specific parameter (i.e. Changing this parameter from the drive keypad would not be allowed with the current access level.)

#### Over Maximum

A parameter with **red** text implies that its value is greater than its maximum. An invalid value in the PAR file could result in this error.

#### Under Minimum

A parameter with **green** text implies that its value is less than its minimum. An invalid value in the PAR file could result in this error.

## Modifying Parameters

1. Begin modifying a parameter by double-clicking on the row of the parameter.
2. A drop-down list or edit box will appear in the *Setting* column.
3. Press Enter to accept the change or Escape to cancel.

Parameter	Description	Setting	CDO
F5-04	DO Ch4 Select	F:Not Used	x
F5-05	DO Ch5 Select	F:Not Used	x
F5-06	DO Ch6 Select	10:Minor Fault	x
F5-07	DO Ch7 Select	11:Reset Cmd ...	x
F5-08	DO Ch8 Select	12:Timer Output	x
F5-09	DO-08 Selection	13:Fref/Fout A...	x
F6-01	Comm Bus Flt Sel	14:Fref/Set Ag...	x
		15:Freq Detect 3	x
		16:Freq Detect 4	x
		17:Trq Det 1 N.C.	x

#### Drop-down List Example.

This is displayed for drive parameters with a finite list of options.

Parameter	Description	Setting	CDO
E1-01	Input Voltage	230	x
E1-03	V/F Selection	1:60 Hz Saturation	x
E1-04	Max Frequency	50.0	x
E1-05	Max Voltage	230.0	x

#### Edit Box Example

This is displayed for drive parameters with a numeric range.

#### Notes:

1. If a change is made, ENTER is not pressed to accept it, and the user clicks on another row or column, the value will revert back to what it was before the change.
2. If a parameter is changed to an invalid value, under the minimum value or over the maximum value, an appropriate message will be displayed and the value being edited will revert back to what it was before the change.

# Visual Programming

An additional editing option targeted towards more complicated parameters or parameters with extended settings that require using a table to calculate the value.

Parameters with a Visual Programming option display an icon.

To Edit:

- 1. Left-click once on the Visual Programming icon
- 2. Click on the appropriate selections.
- 3. Choose OK to accept the change or Cancel to abort.

Parameter	Description	Setting
H1-01	Terminal S3 Sel	0:Multi-Step Ref 2
H1-02	Terminal S4 Sel	1:Multi-Step Ref 3
H1-03	Terminal S5 Sel	25:External Fault
H1-04	Terminal S6 Sel	Not Used
H1-05	Terminal S7 Sel	Not Used

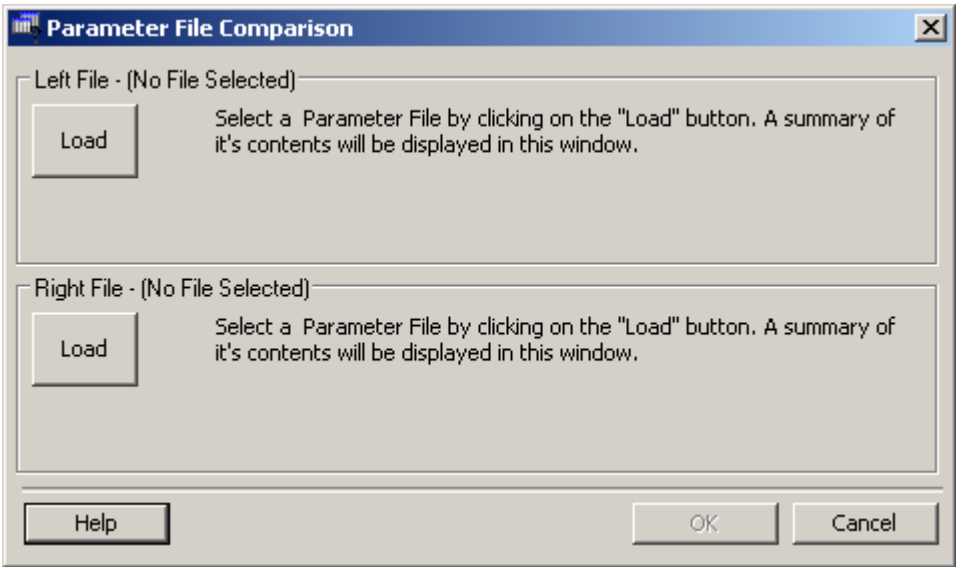
External Fault Response Selection

External Fault Selection								Setting Result
Input Level Selection		Detection Method		External Fault Action				
N.O.	N.C.	Always	During Run	Ramp to Stop	Coast to Stop	Fast-Stop*	Alarm Only	
	X	X			X			25

OKCancel

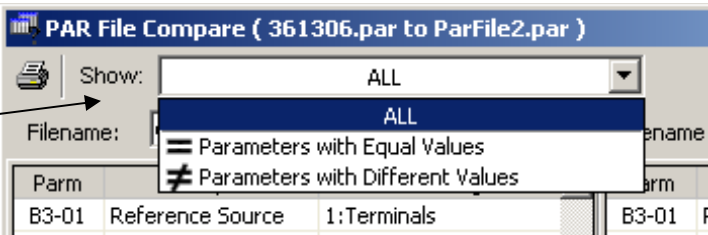
# Parameter File Comparison

The Parameter File Comparison function found in the Tools drop-down menu allows for comparison of two sets of parameter files. Use the Load button to select the file you want to view on the left and right side.



Once the parameter files are loaded, you can use the “Show” drop-down to compare:

- all parameters of each file,
- only parameters with equal values.
- or only parameters with different values,



Parm	Description	Setting
B3-01	Reference Source	1:Terminals
B3-02	Run Source	1:Terminals
B3-03	Stopping Method	6:No Load Brake
B3-04	Change Rotation	0:Normal Rotation
B3-05	Zero-Speed Oper	0:RUN at Freq Ref
B3-06	Cntl Input Scans	1:5mS - 2 Scans
B3-07	LOC/REM RUN Sel	0:Cycle Extrn RUN
B3-08	RUN CMD at PRG	0:Disabled
B3-09	L/R Select@Drive	0:Disabled
B3-10	AllowRun@Powerup	0:Disabled
B4-01	MOP Ref Memory	0:Disabled
B4-02	Trim Control Lvl	10
B5-01	Accel Time 1	5.0
B5-02	Decel Time 1	10.0
B5-03	Accel Time 2	2.0
B5-04	Decel Time 2	2.0
B5-05	Acc Time N Chg	2.0
B5-06	Dec Time N Chg	2.0
B5-08	Fast Stop Time	0.5
B5-09	Acc/Dec Units	1:0.1 Seconds

Parm	Description	Setting
B3-01	Reference Source	1:Terminals
B3-02	Run Source	1:Terminals
B3-03	Stopping Method	0:Decel to Stop
B3-04	Change Rotation	0:Normal Rotation
B3-05	Zero-Speed Oper	0:RUN at Freq Ref
B3-06	Cntl Input Scans	1:5mS - 2 Scans
B3-07	LOC/REM RUN Sel	0:Cycle Extrn RUN
B3-08	RUN CMD at PRG	0:Disabled
B3-09	L/R Select@Drive	0:Disabled
B3-10	AllowRun@Powerup	0:Disabled
B4-01	MOP Ref Memory	0:Disabled
B4-02	Trim Control Lvl	10
B5-01	Accel Time 1	10.0
B5-02	Decel Time 1	10.0
B5-03	Accel Time 2	2.0
B5-04	Decel Time 2	2.0
B5-05	Acc Time N Chg	2.0
B5-06	Dec Time N Chg	2.0
B5-08	Fast Stop Time	0.5
B5-09	Acc/Dec Units	1:0.1 Seconds

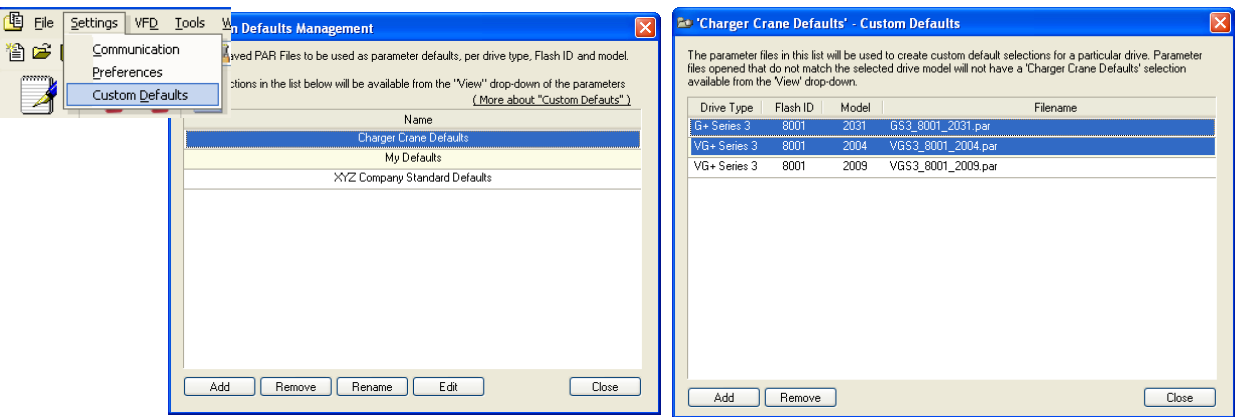
Parameters shown in Red are parameters with different values.

# Custom Defaults

This function allows for the comparison of your current drive parameters to a custom, alternate set of parameters. This allows for a quick analysis of incorrect or non-uniform parameter setting within a file, without having to compare multiple files.

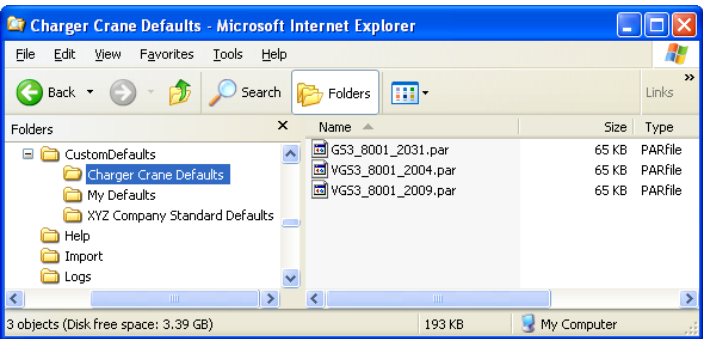
## Setting Up Your Custom Defaults:

Custom Defaults are organized into Groups and Files. Each Group contains files with a unique combination of drive type, flash ID and model. Maintenance screens are provided for adding and removing these files.



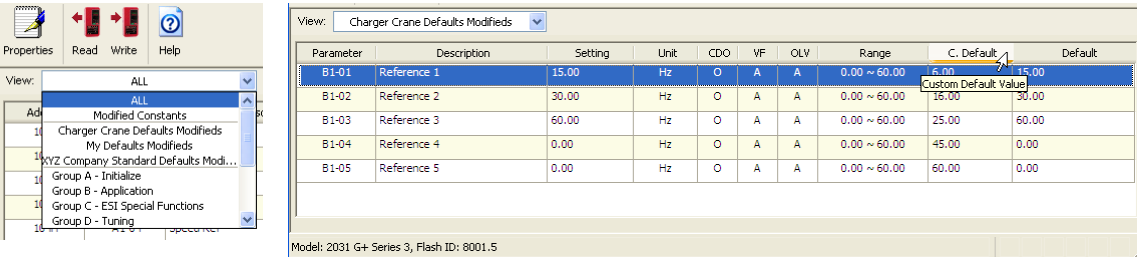
Alternatively, the user may also copy the entire “CustomDefaults” sub-directory from computer to computer. When Impulse Link 4.1 first loads, it scans the “CustomDefaults” sub-directory for valid PAR files.

**Note:** The default Impulse Link 4.1 WDS path is “C:\Program Files\Electromotive Systems\Impulse Link 4.1\”



## Using Custom Defaults:

Using Custom Defaults is not much different than viewing Modified Constants. If the selected PAR file matches the drive type, flash ID and model within one of the Groups, the Group will appear in the drop-down. When a Group is selected, an additional column is displayed and the parameter file is filtered by whether the value matches the custom default. (rather than the factory default)

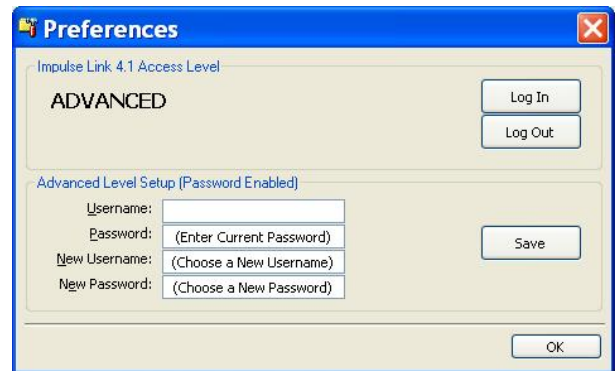




## Security / Password Protection

The 'Preferences' drop-down menu in IMPULSE•LINK 4.1 WDS software allows you to set the access level, username and password.

By logging out of the *Advanced* mode, you will be in the User mode. While in the User mode, the drives can only be monitored. Write to VFD and Reset functions are NOT available.

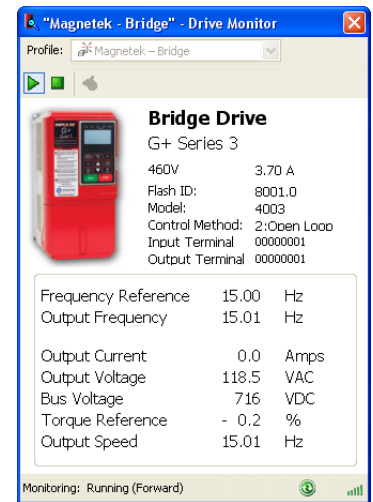
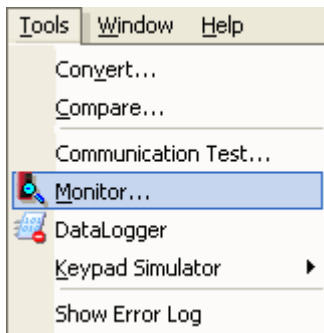


The image shows a Windows-style dialog box titled "Preferences" with a blue header bar. Below the header, the text "Impulse Link 4.1 Access Level" is displayed. The main area is divided into two sections. The top section is titled "ADVANCED" and contains two buttons: "Log In" and "Log Out". The bottom section is titled "Advanced Level Setup (Password Enabled)" and contains four input fields: "Username:", "Password:" (with the placeholder text "(Enter Current Password)"), "New Username:" (with the placeholder text "(Choose a New Username)"), and "New Password:" (with the placeholder text "(Choose a New Password)"). To the right of these fields is a "Save" button. At the bottom right of the dialog is an "OK" button.

# Chapter 5 - Monitor / DataLogger Function

## Monitor

There is a 'Monitor' function in the 'Tools' drop-down, which displays a select number of monitor parameters (U-parameters) that are continually updated.



## DataLogger

The DataLogger function provides monitoring of multiple IMPULSE drives simultaneously while it also records run, fault and alarm events to file.

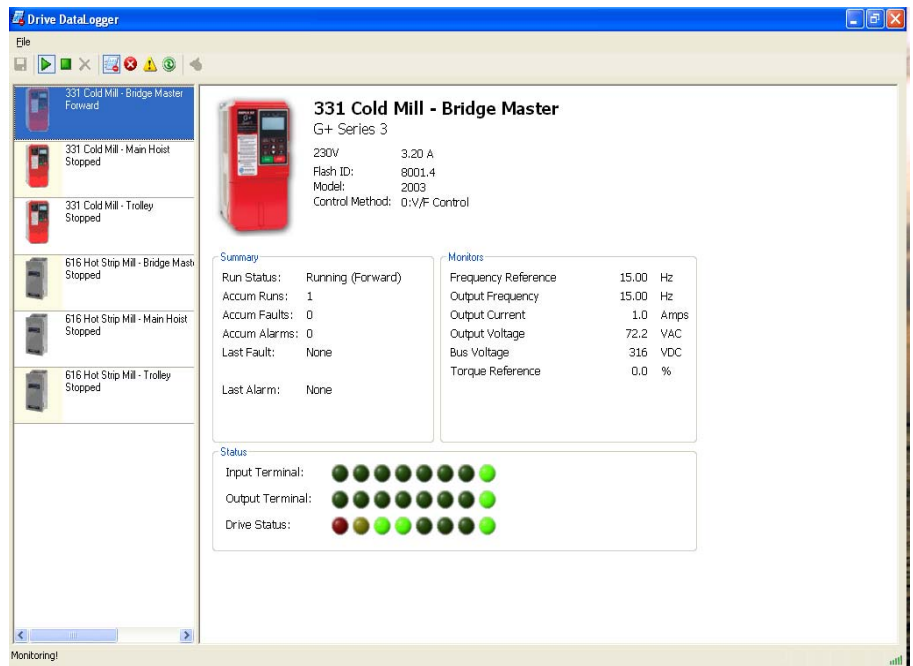
**Note:** A displayed fault may be clicked on to bring up corresponding help content.

A DataLogger file (DS3) contains a limited number of events. When the maximum has been reached, the oldest entry is replaced. For each event, there are corresponding voltages, currents and frequencies recorded at the time the event occurred. For faults and alarms, additional data that occurred just prior to the event is also logged. This is known as *Trace data*.

Available Events:

- 1400 run events
- 200 alarm events
- 200 fault events.

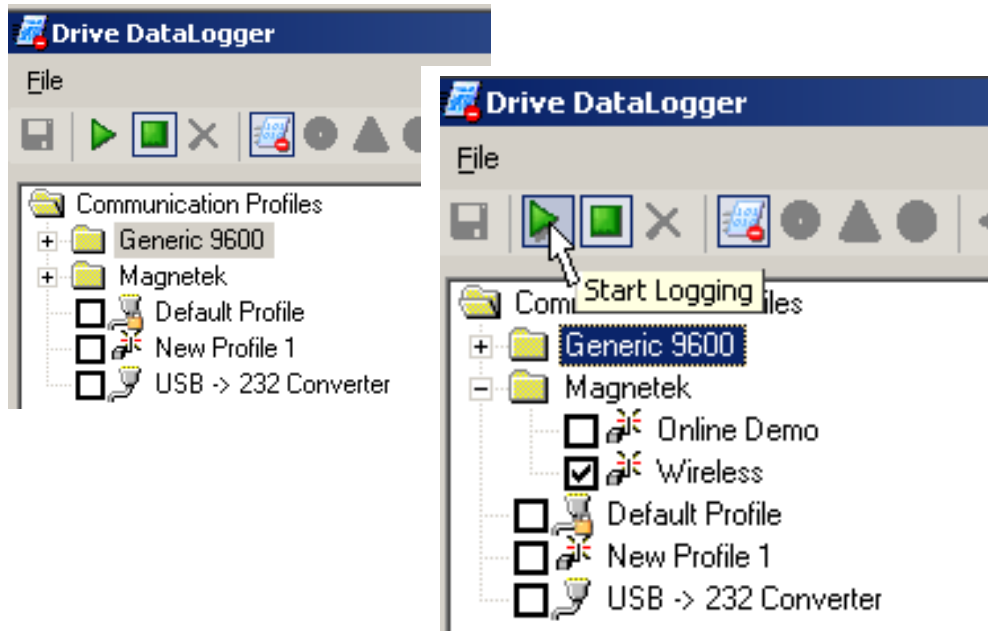
A DataLogger file may be e-mailed for additional troubleshooting assistance.



**Note:** The DataLogger function does not support data logging of IMPULSE•P3 Series 2 drives.

## To Begin

1. Click the check box of the drive(s) you want to monitor
2. Click the play button.



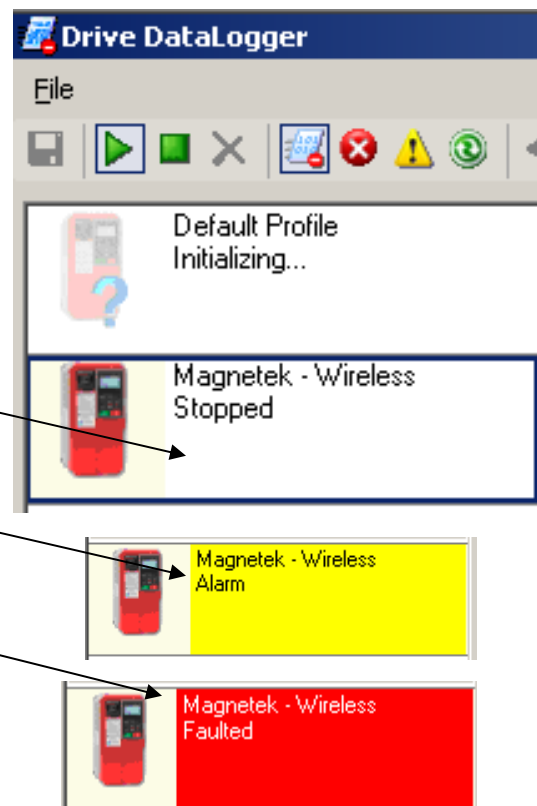
The left window will change to show a button for each of the drives you selected and the overall status of the drive after it initializes connection.

Each button will display a different color base on the status of the drive profile.

**White background with black text** – normal operation of the drive.

**Yellow background with black text** – there is an alarm present on the drive.

**Red background with white text** – there is a fault present on the drive.



This button also contains a brief description of the status. The following table lists these brief text messages displayed along with a description for each.

Brief Text Displayed	Description
Alarm	Drive has an Alarm
Communication Error <error code>	IMPULSE LINK is having trouble communicating with the drive. An error code will be shown to further assist
Connected!	IMPULSE LINK has established connection to the drive
Connecting...	IMPULSE LINK is preparing the communication with the drive
Disconnected	Communication has been lost between IMPULSE LINK and the drive
Drive Not Supported	The drive selected is not supported by the DataLogger function
Faulted	Drive has a fault
Forward	Drive is being issued "Forward" command to run.
Initializing...	IMPULSE LINK is trying to establish communication with the drive
Reverse	Drive is being issued "Reverse" command to run.
Stopped	Drive is stopped
Zero Spd	Drive is at "Zero Speed"

Clicking the button in the left window for the drive, the right window will show the profile of the drive selected at the top along with continually updated information. There are 4 main areas displayed.

- 1) Profile of the drive selected showing
- 2) Summary
- 3) Monitor, and
- 4) Status

**Profile** - Displays the drive profile and other information about the drive

**Summary** – Displays current status of drive including last fault or alarm

Summary	
Run Status:	Stopped
Accum Runs:	2
Accum Faults:	11
Accum Alarms:	5
Last Fault:	<u>EF5 - Ext Fault S5</u> 01/16/2008 11:47:42
Last Alarm:	<u>EF5 - Ext Fault S5</u> 01/16/2008 11:36:33



#### Magnetek - Wireless




G+ Series 3

230V                      3.20 A  
Flash ID:                8001.3  
Model:                    2003  
Control Method:        0:V/F Control

**Monitor** – Displays selected monitor parameters (U-Parameters).

Monitors		
Frequency Reference	15.00	Hz
Output Frequency	0.00	Hz
Output Current	0.0	Amps
Output Voltage	0.0	VAC
Bus Voltage	321	VDC
Torque Reference	0.0	%

**Status** – Shows the status of input and output terminals along with a visual of the drive status.

Status	
Input Terminal:	
Output Terminal:	
Drive Status:	

In the summary window if a Fault or Alarm condition occurs, the DataLogger allows you to click on the Alarm or Fault, and displays troubleshooting information (as shown here).

Summary

Run Status:

Stopped

Accum Runs:

2

Accum Faults:

11

Accum Alarms:

5

Last Fault:

EF5 - Ext Fault S5

01/16/2008 11:47:42

Last Alarm:

EF5 - Ext Fault S5

01/16/2008 11:43:33

Impulse Link 4.1 Help

Show

Back

Home

Print

Options

External Fault 5

Fault Code	Fault or Indicator Name/Description	Corrective Action
<b>EF5</b> External Fault 5	External Fault 5: External fault occurs on Terminal S5.	<div>1. Check constant H1-03 for proper programming.</div> <div>2. Check the condition of the input terminal S5.</div>

The Status window allows for the viewing of input and output terminal status. By using your mouse, you can roll over the LED to view the meaning. See the example below.

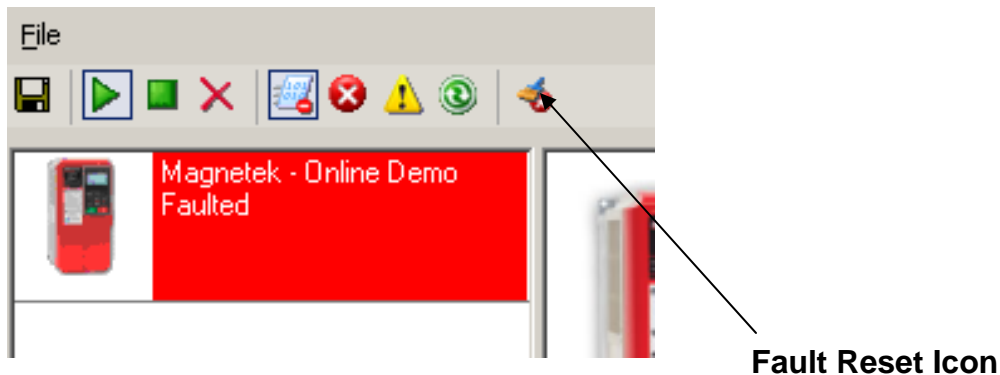
Status

Input Terminal:

Terminal 5 is ON

## Fault Reset

In the event of a fault condition, you will see the fault icon on either the DataLogger window or the Monitor window as indicated below.



**Note:** You can reset a fault in the Monitor window or DataLogger window, as long as the drive doesn't have a Run command and the fault condition no longer exists. Once you click on the fault reset icon (as shown above), a warning message will prompt you to accept that you acknowledge the warning. When resetting a drive remotely, you need to be sure that all personnel and/or operators are notified. Once you have checked the "I accept" box, the "Continue Fault Reset" button will be available.



Fault / Alarm / Run history

Click on any one of the three icons (Fault/Alarm/Run) at the top of the DataLogger will change the view to show three new tabs. Each tab will allow you to view either Fault, Alarm, or Run history for the drive.



In this window you can view the History for each tab. Clicking on the plus (+) sign will show additional information related to the fault or alarm.

Fault History   Alarm History   Run History							
Fault #	Description	Run #	Date	Time			
⊕ 1	EF5 - Ext Fault S5	None	01/16/2008	15:53:20			
⊕ 2	EF5 - Ext Fault S5	12	01/16/2008	15:53:31			
⊕ 3	EF5 - Ext Fault S5	None	01/16/2008	15:57:31			
⊕ 4	EF5 - Ext Fault S5	None	01/16/2008	15:58:50			
⊕ 5	EF5 - Ext Fault S5	13	01/16/2008	16:27:57			
⊕ 6	EF5 - Ext Fault S5	None	01/16/2008	16:28:34			

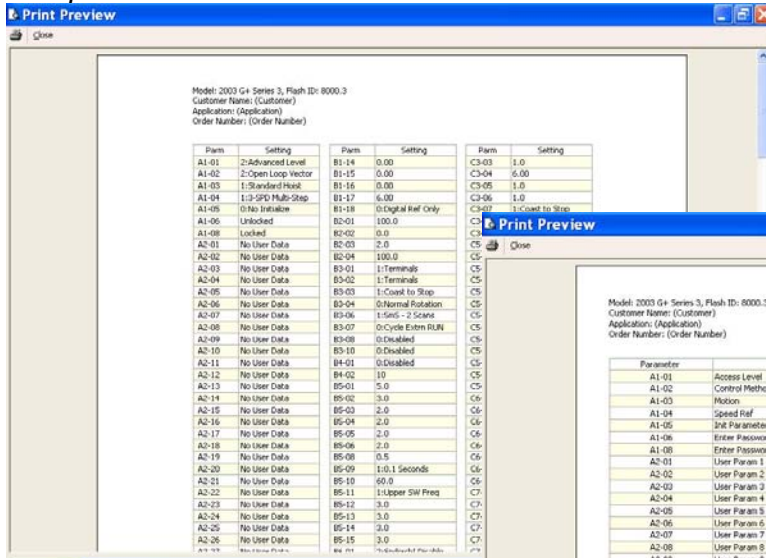
⊖ 5	EF5 - Ext Fault S5	13	01/16/2008	16:27:57	60.00	60.0	
Trace Data		Trace No	Date	Time	U1-01	U1-02	
		5	01/16/2008	16:27:57	60.00	59.43	
		4	01/16/2008	16:27:56	60.00	60.00	
		3	01/16/2008	16:27:56	60.00	60.00	
		2	01/16/2008	16:27:56	60.00	59.93	
		1	01/16/2008	16:27:55	60.00	58.30	

# Chapter 6 - Additional Menu Features

## Print Preview

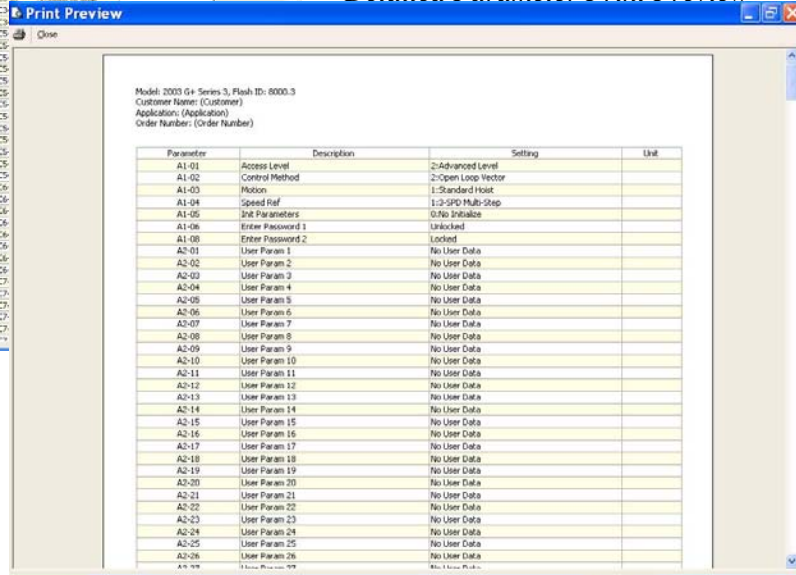
IMPULSE•LINK 4.1 WDS provides a compact printing mode that displays all drive parameters in only 1-2 pages. It also prints a more detailed mode that lists descriptions as well as units for each parameter.

### Compact Parameter Print Preview



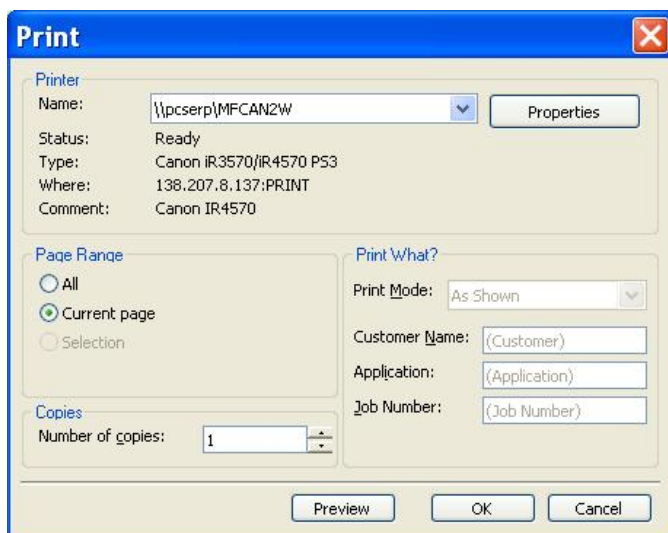
Param	Setting	Param	Setting	Param	Setting
A1-01	2-Advanced Level	B1-14	0.00	C3-03	1.0
A1-02	2-Open Loop Vector	B1-15	0.00	C3-04	6.00
A1-03	1-Standard Host	B1-16	0.00	C3-05	1.0
A1-04	1-3-SPD Multi-Step	B1-17	6.00	C3-06	1.0
A1-05	0-No Initialize	B1-18	0-Digital Ref Only	C3-07	1-Coast to Stop
A1-06	Unlocked	B2-01	100.0	C3-08	1-Coast to Stop
A1-08	Locked	B2-02	0.0	C3-09	1-Coast to Stop
A2-01	No User Data	B2-03	2.0	C3-10	1-Coast to Stop
A2-02	No User Data	B2-04	100.0	C3-11	1-Coast to Stop
A2-03	No User Data	B3-01	1-Terminals	C3-12	1-Coast to Stop
A2-04	No User Data	B3-02	1-Terminals	C3-13	1-Coast to Stop
A2-05	No User Data	B3-03	1-Coast to Stop	C3-14	1-Coast to Stop
A2-06	No User Data	B3-04	0-Normal Rotation	C3-15	1-Coast to Stop
A2-07	No User Data	B3-05	1-50% - 2 Scans	C3-16	1-Coast to Stop
A2-08	No User Data	B3-07	0-Cycle Extm RUN	C3-17	1-Coast to Stop
A2-09	No User Data	B3-08	0-Doubled	C3-18	1-Coast to Stop
A2-10	No User Data	B3-10	0-Doubled	C3-19	1-Coast to Stop
A2-11	No User Data	B4-01	0-Doubled	C3-20	1-Coast to Stop
A2-12	No User Data	B4-02	10	C3-21	1-Coast to Stop
A2-13	No User Data	B5-01	5.0	C3-22	1-Coast to Stop
A2-14	No User Data	B5-02	3.0	C3-23	1-Coast to Stop
A2-15	No User Data	B5-03	2.0	C3-24	1-Coast to Stop
A2-16	No User Data	B5-04	2.0	C3-25	1-Coast to Stop
A2-17	No User Data	B5-05	2.0	C3-26	1-Coast to Stop
A2-18	No User Data	B5-06	2.0	C3-27	1-Coast to Stop
A2-19	No User Data	B5-08	0.5	C3-28	1-Coast to Stop
A2-20	No User Data	B5-09	1.0-1 Seconds	C3-29	1-Coast to Stop
A2-21	No User Data	B5-10	60.0	C3-30	1-Coast to Stop
A2-22	No User Data	B5-11	1-Upper SW Pres	C3-31	1-Coast to Stop
A2-23	No User Data	B5-12	3.0	C3-32	1-Coast to Stop
A2-24	No User Data	B5-13	3.0	C3-33	1-Coast to Stop
A2-25	No User Data	B5-14	2.0	C3-34	1-Coast to Stop
A2-26	No User Data	B5-15	2.0	C3-35	1-Coast to Stop

### Detailed Parameter Print Preview



Parameter	Description	Setting	Unit
A1-01	Access Level	2-Advanced Level	
A1-02	Control Method	2-Open Loop Vector	
A1-03	Motion	1-Standard Host	
A1-04	Speed Prof	1-3-SPD Multi-Step	
A1-05	2nd Parameters	0-No Initialize	
A1-06	Enter Password 1	Unlocked	
A1-08	Enter Password 2	Locked	
A2-01	User Param 1	No User Data	
A2-02	User Param 2	No User Data	
A2-03	User Param 3	No User Data	
A2-04	User Param 4	No User Data	
A2-05	User Param 5	No User Data	
A2-06	User Param 6	No User Data	
A2-07	User Param 7	No User Data	
A2-08	User Param 8	No User Data	
A2-09	User Param 9	No User Data	
A2-10	User Param 10	No User Data	
A2-11	User Param 11	No User Data	
A2-12	User Param 12	No User Data	
A2-13	User Param 13	No User Data	
A2-14	User Param 14	No User Data	
A2-15	User Param 15	No User Data	
A2-16	User Param 16	No User Data	
A2-17	User Param 17	No User Data	
A2-18	User Param 18	No User Data	
A2-19	User Param 19	No User Data	
A2-20	User Param 20	No User Data	
A2-21	User Param 21	No User Data	
A2-22	User Param 22	No User Data	
A2-23	User Param 23	No User Data	
A2-24	User Param 24	No User Data	
A2-25	User Param 25	No User Data	
A2-26	User Param 26	No User Data	

## Print



**Print**

Printer Name: \\pcserp\MFCAN2W [Properties]

Status: Ready

Type: Canon IR3570/IR4570 P53

Where: 138.207.8.137:PRINT

Comment: Canon IR4570

Page Range: ☐ All ☒ Current page ☐ Selection

Print What? Print Mode: As Shown

Customer Name: (Customer)

Application: (Application)

Job Number: (Job Number)

Copies: Number of copies: 1

[Preview] [OK] [Cancel]

**Printer Name** – Allows the user to select from any printer installed on his/her system. The user's default printer is initially selected.

**Print Mode** - Allows the user to choose the printing style.

- o **Compact mode** (1-2 pages) provides parameter name and setting value.
- o **Detailed mode** provides parameters, descriptions, setting, values and units as well as 'modified' information.
- o As shown prints all of the information as shown on the screen.

**OK Button** – Prints the active parameter set to the selected printer in the chosen format.

**Cancel** – Closes this dialog box without printing. Changes to Customer Name, Application and Job Number are **not** saved.

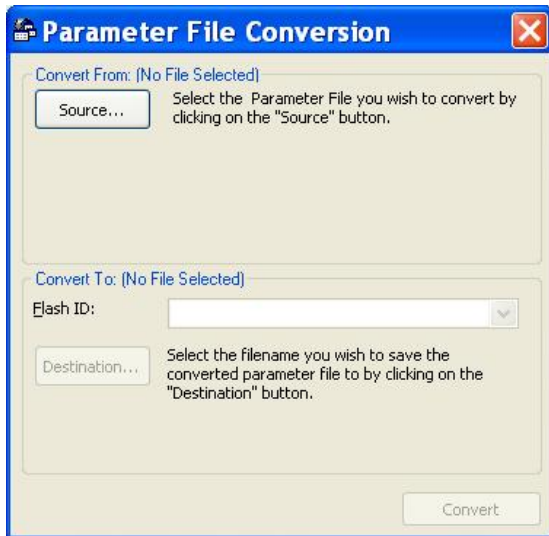
Text placed in the Customer Name, Application and Job Number fields appear on the printout.

**NOTE:** Only parameters that are viewable in the Parameters Window will be printed.



## Parameter File Conversion

'Convert' under the 'Tools' menu allows for parameter files to be converted from one software/Flash ID version to another (within the same drive series).



**Source** – Specifies the file to be converted.

**Flash ID** – Specifies the software type that the file will be converted to.

**Destination Filename** – Specifies the Destination filename.

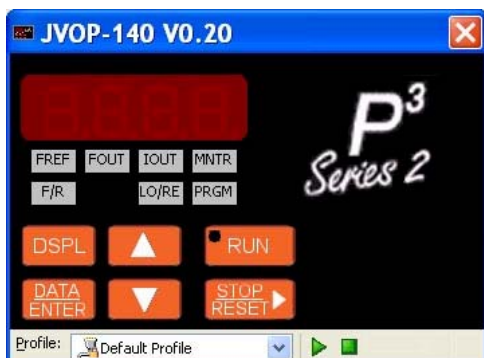
**Convert** - Converts the parameter file specified in "Source" to the format specified in the software version in the Flash ID. The converted file is saved to the filename and path specified in "Destination Filename".




**Keypad Emulator** – The keypad emulator communicates with an IMPULSE drive exactly as the physical keypad does. This allows for remote keypad menu navigation.

**Note:** This function is only available when IMPULSE•LINK 4.1 WDS is connected via the drive's keypad 1CN connector (instead of the standard RS485 connection) – primarily for training purposes.

If you attempt to run the keypad simulator while connected via the standard RS485 connection a CF00 Comm Error will occur.

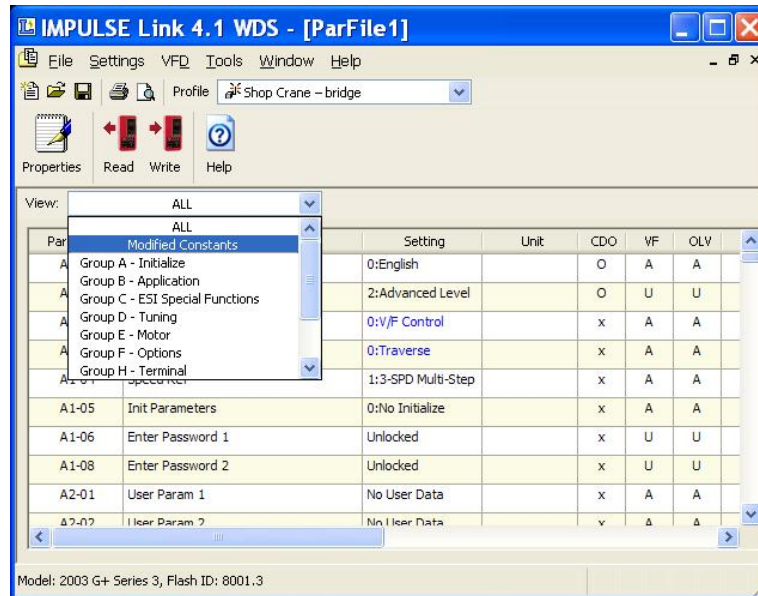


### Digital Operator Emulator NOTES:

1. To Activate, Select the correct drive profile from the dropdown and click the  button.
2. The Keypad will automatically close if any communication function, such as Upload and Download, or a new offline parameter set is created from the Controller Properties window.
3. The RUN command has been disabled for safety reasons.
4. If the drive is put into "Program Mode" and not returned to "Run Mode", the user will be unable to run the drive.

## Viewing Parameters

The 'View' drop-down box allows filtering of parameters based on parameter group organization and the parameter value (modified from factory defaults or from custom defaults).



## Copying to the Clipboard

Impulse Link 4.1 provides the ability to copy displayed parameter information to a preferred word processor or spreadsheet.

To do this, select one or more rows and either press Ctrl-C or right-click to display the context menu, shown to the right. The copied information is available to be pasted in either HTML format or Ascii text.

**Tip:** Change from full row selection mode to single cell selection mode by doing the following.

1. Click and hold the left mouse button over any row.
2. Drag the mouse down while the left-mouse button is still being held. An icon will replace your mouse pointer
3. While still holding the left mouse button, click the right mouse button. The icon will become skinnier and you will no longer be restricted to selecting the whole row.

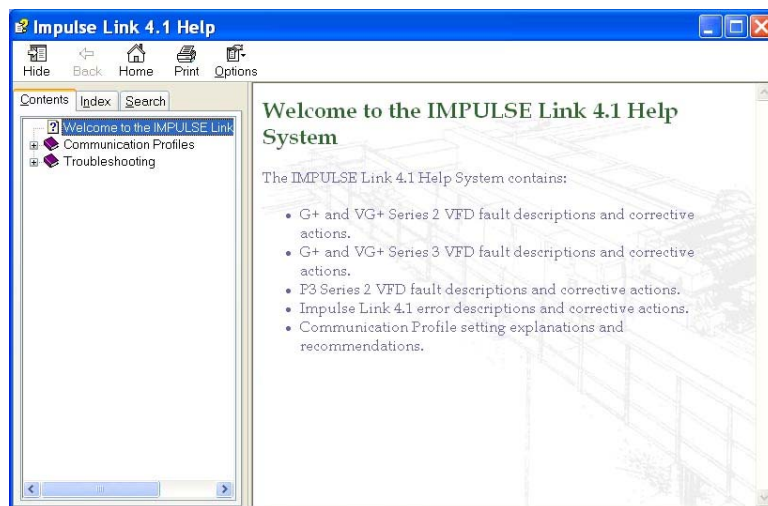
Repeat to return to full row mode.



# Chapter 7 - Troubleshooting

The IMPULSE•LINK 4.1 WDS Help section provides the following:

- Reference to Drive faults and corrective actions.
- Reference to Impulse Link error codes and corrective actions.
- Communication profile settings overview.

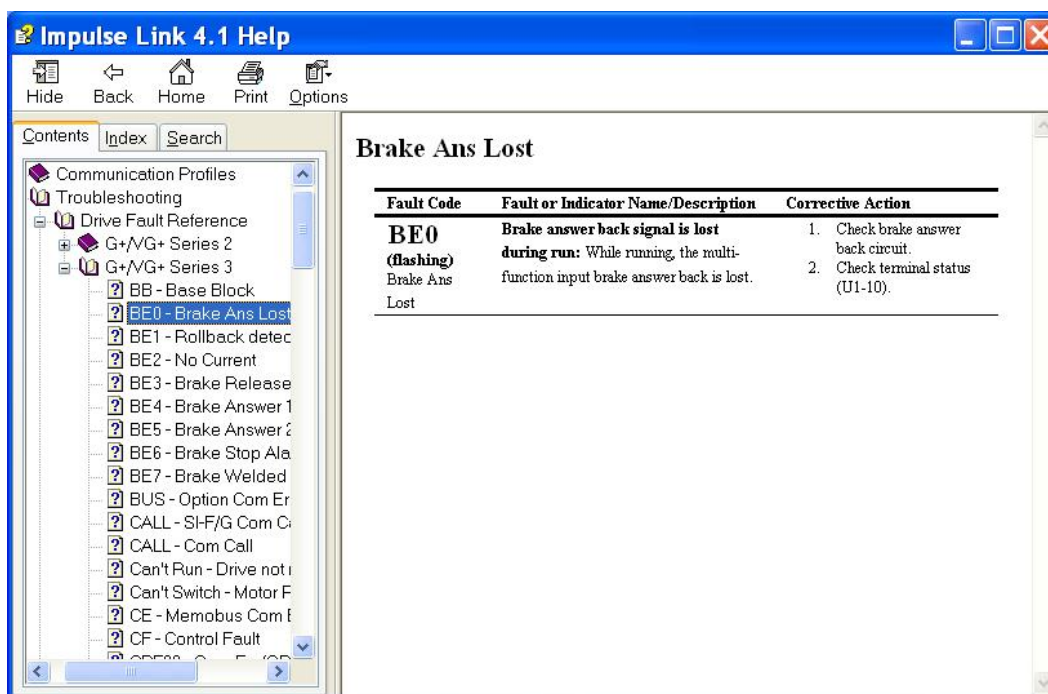


## Drive Faults References-

IMPULSE•LINK 4.1 WDS offers built-in Help screens for the drive faults and/or alarms. The Help screens provide advanced diagnostics allowing you to troubleshoot your drive from your PC. When you 'click' on the fault, the help screen provides the fault code, fault name/description, and the corrective action.

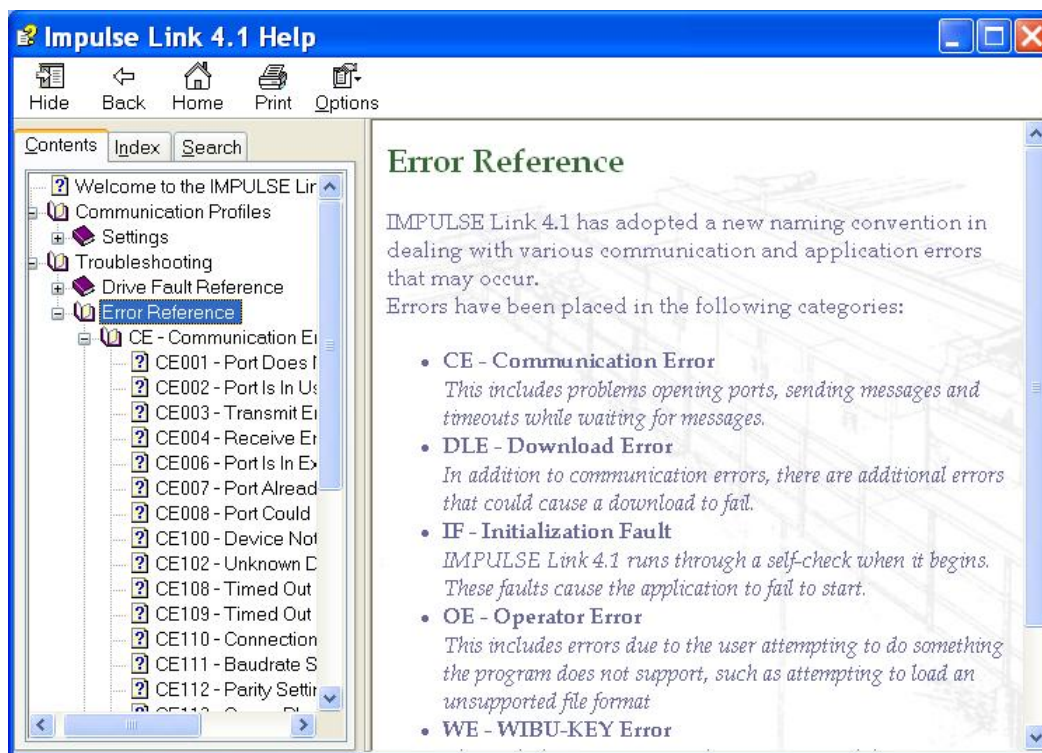
[PGO - PG Open](#)

Or you can simply go to the Help Icon and go to the Drive Fault References for a complete list of P3 Series 2, G+/VG+ Series 2 and 3 drive faults, as shown below:

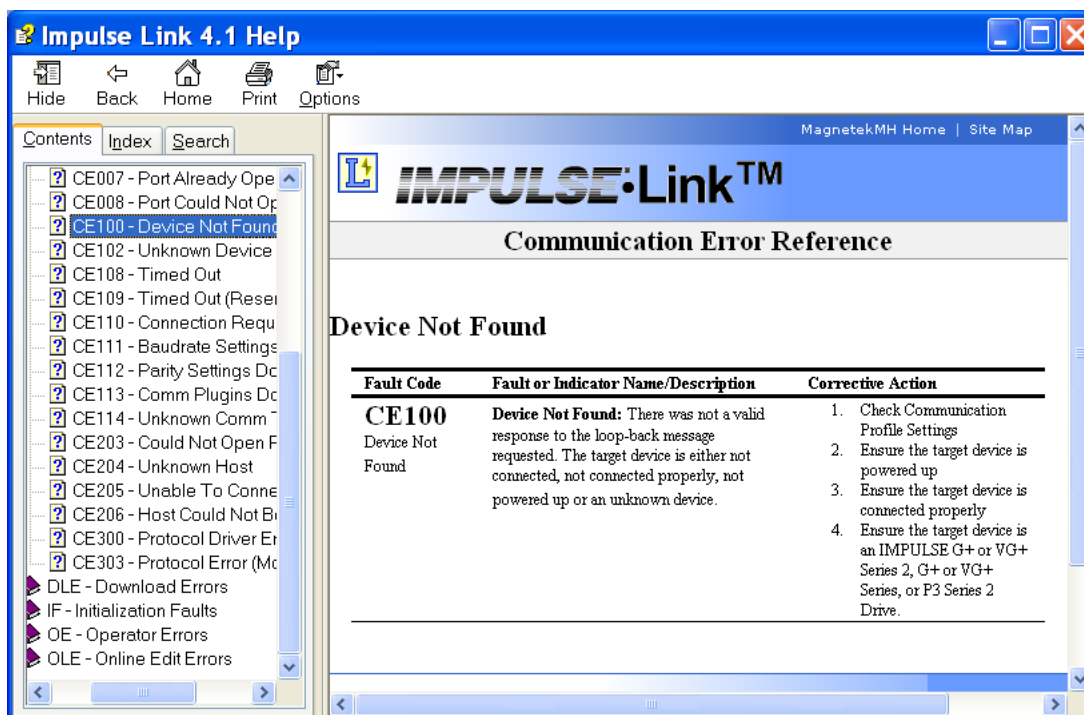


## Communication Error References

The Help function provides an overview of the possible errors that could occur while running IMPULSE• LINK 4.1 WDS, as shown here:



By clicking on the type of error, you will be provided the fault code with description and correction action.



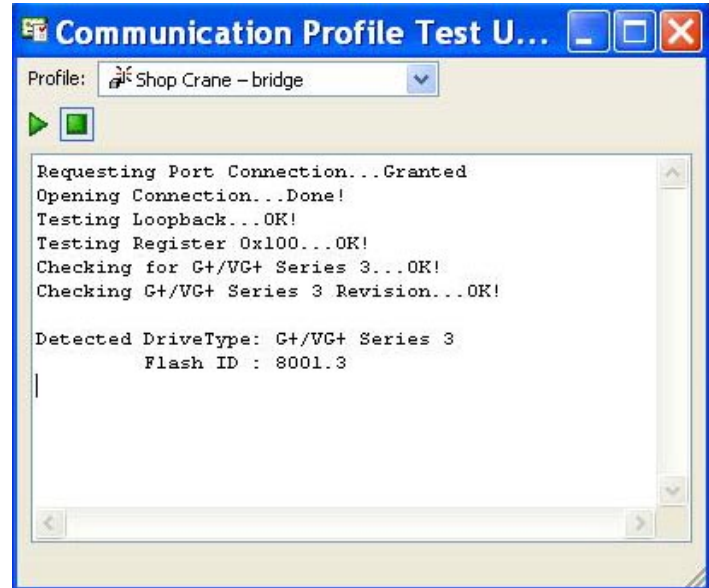


## Communication Profile Test

The Communication Profile Test Utility is a tool to assist in troubleshooting communication difficulties. It performs the following sequence:

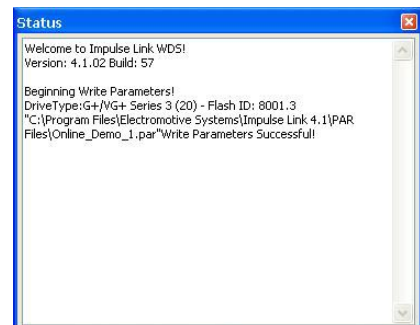
1. Opens the communication port with the selected settings. If the port opens successfully, the port exists and Impulse Link has access to it.
2. Sends a loop-back test message to establish whether a valid device exists with the settings in the profile. If the loop-back fails, the device may not be powered, present or supported.
3. Identifies the drive model and version. If the discovered type is unknown, Impulse Link does not support it.

**Note:** If any of the above steps fail, an error message is prompted to the user with an error code (i.e. CE100). For further troubleshooting reference the error code in the help section.



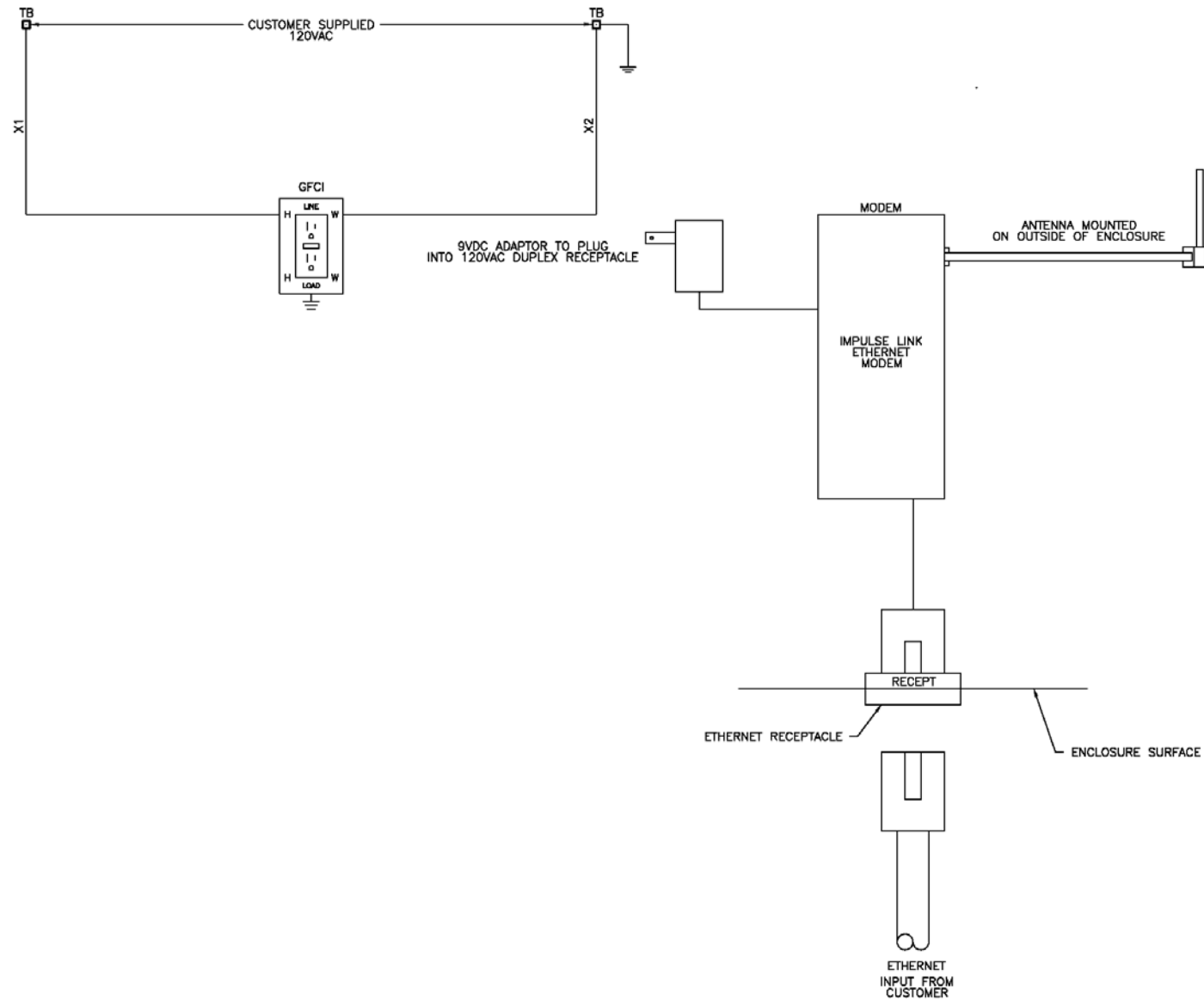
## Show Error Log

This function also found in the Tools drop-down menu, brings up an additional window showing various status details of IMPULSE•LINK 4.1 WDS.



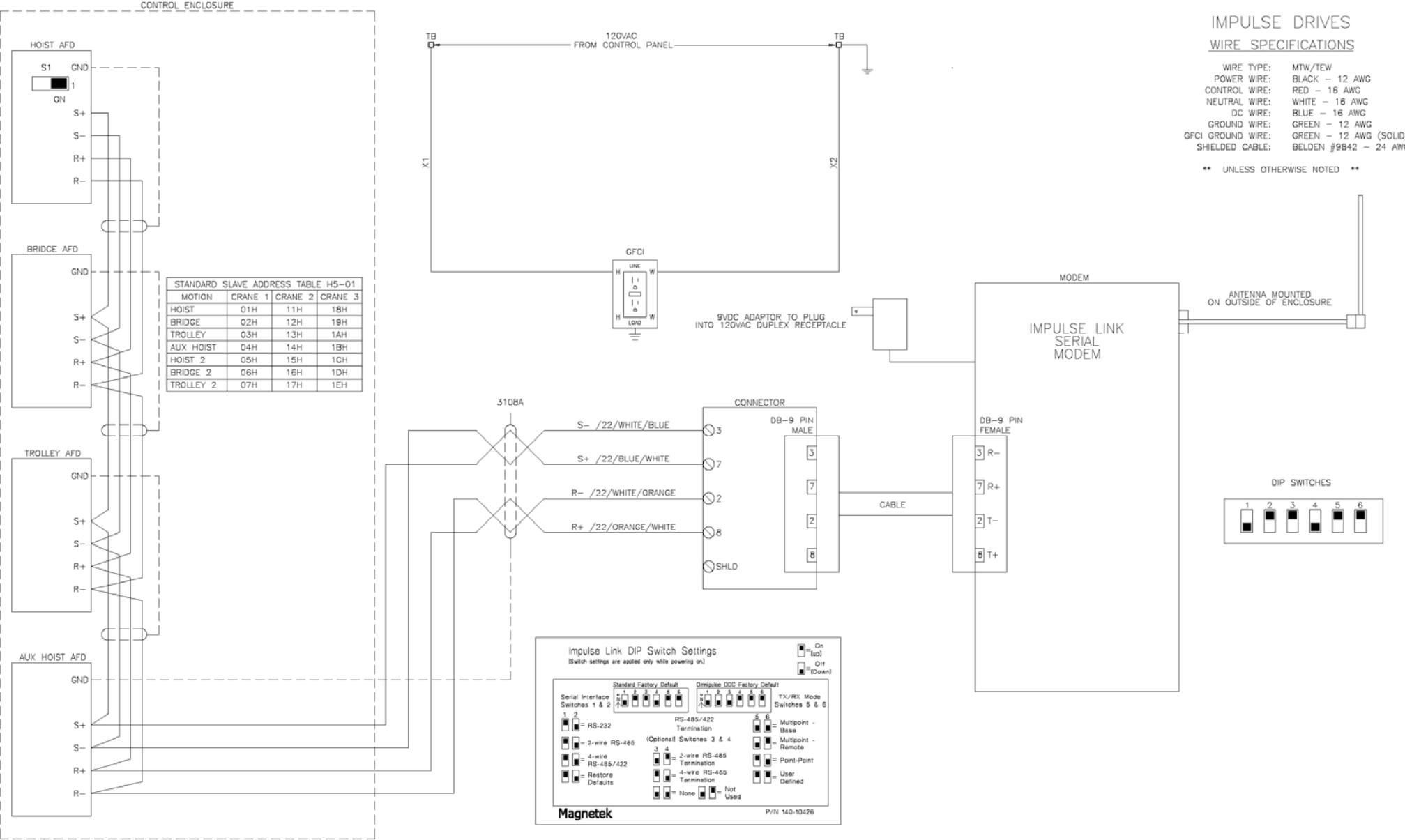
# Chapter 8 - Appendices

## Appendix A: Serial Wiring for IMPULSE LINK WDS Base Unit

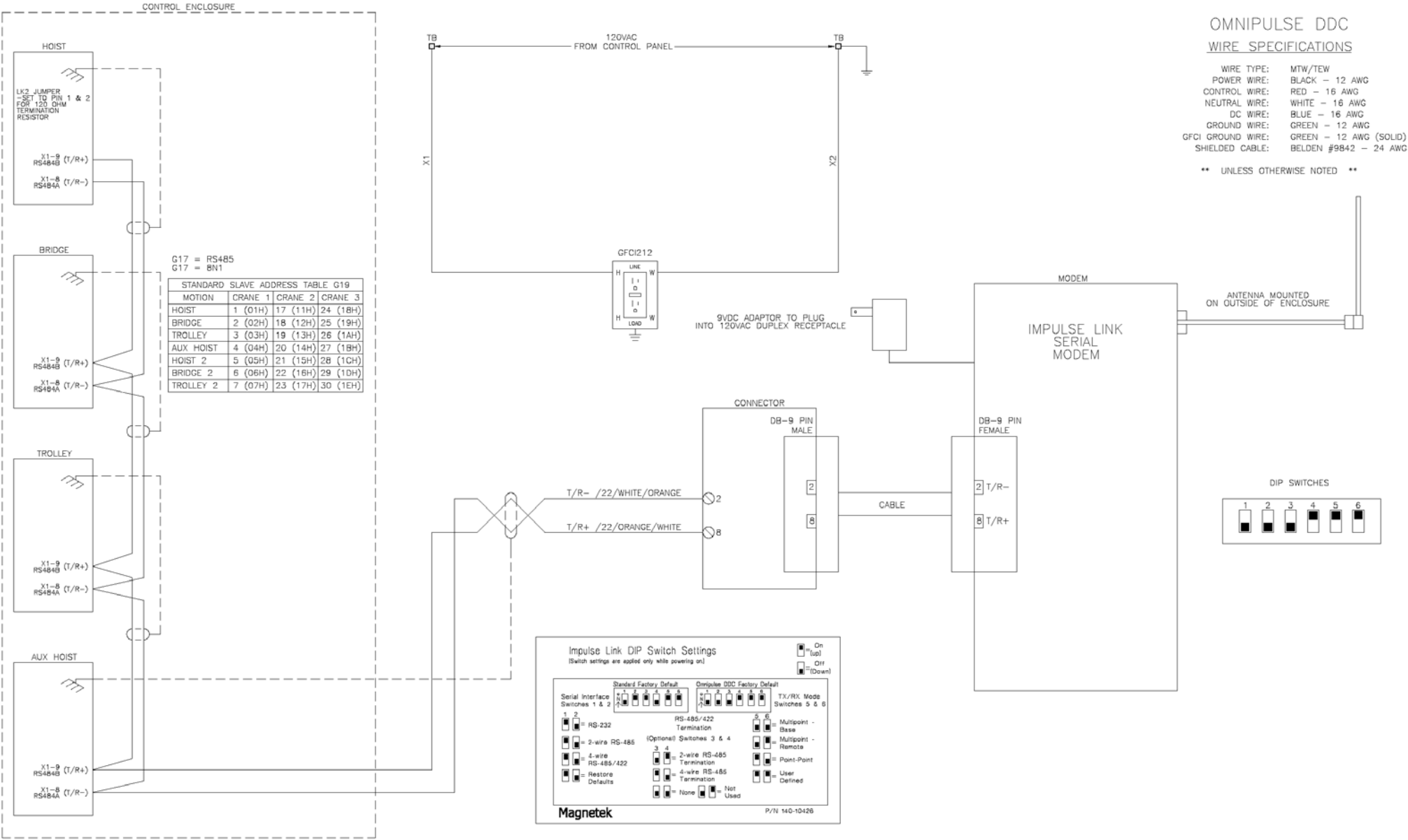


# Appendix B: Serial Wiring for IMPULSE LINK WDS Remote Unit

(G+/VG+ Series 3, P3 Series 2, G+/VG+ Series 2)

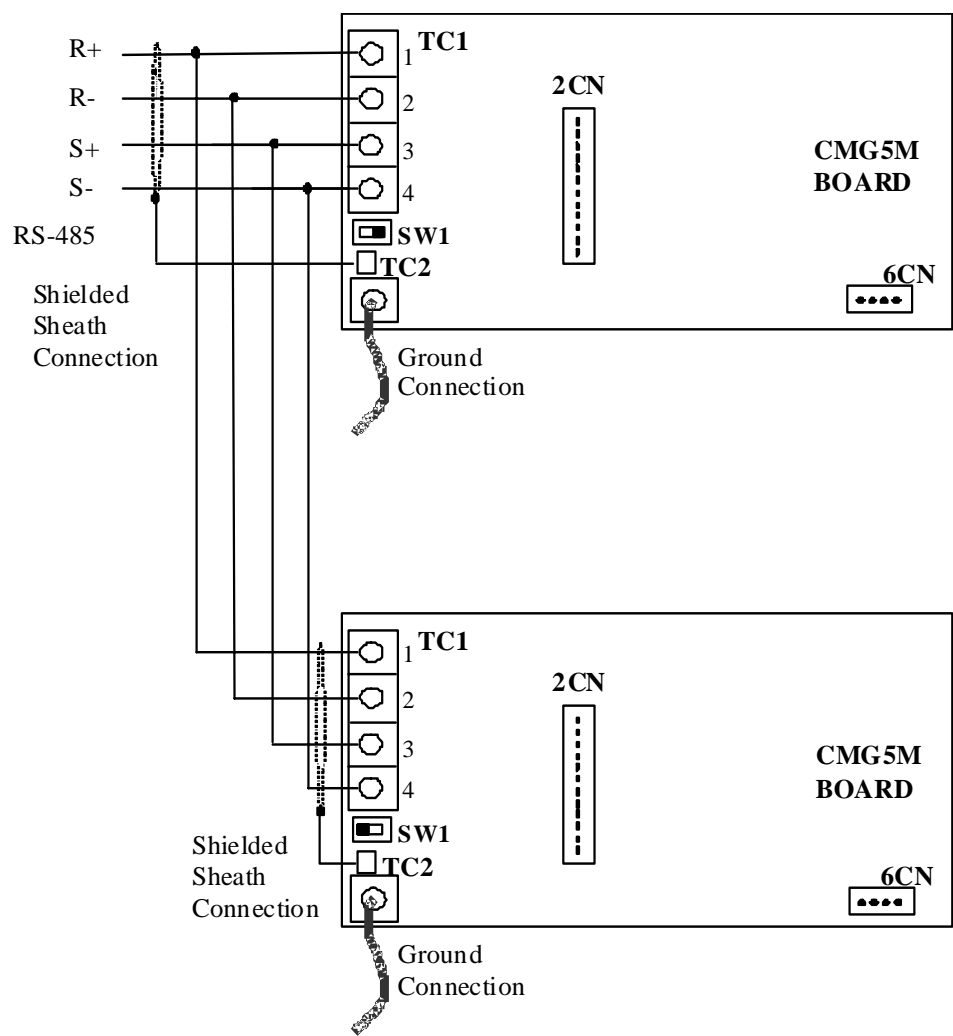


# Wiring for IMPULSE LINK WDS Remote Unit (OmniPulse DDC)



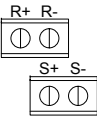


Appendix C: Serial Wiring for IMPULSE G+/VG+ Series 2



Appendix D: Quick Reference

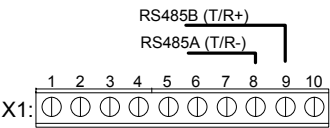
G+/VG+ Series 3



Shield: TB4

Parameter	Typical Setting	
Modbus Address	H5-01	( 01 ~ 1F )
Baud Rate	H5-02	3: 9600 Baud
Parity Select	H5-03	0: No Parity

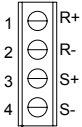
OmniPulse DDC



Shield: Chassis Ground

Baud Rate	G16	9600
RS232/RS485 Select	G17	RS485
Serial Format	G18	8N1
Modbus Address	G19	( 1 ~ 247 )

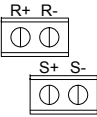
G+/VG+ Series 2  
(SI-K2 option card)



Shield: TC2

Slave Address	H5-01	( 01 ~ 1F )
Baud Rate	H5-02	3: 9600
Parity Select	H5-03	0: No Parity

P3 Series 2



Shield: Chassis Ground

Slave Address	n253	( 01 ~ 1F )
Baud Rate	n254	2: 9600
Parity Select	n255	2: No Parity

Note:  
2 = 9600  
3 = 19200