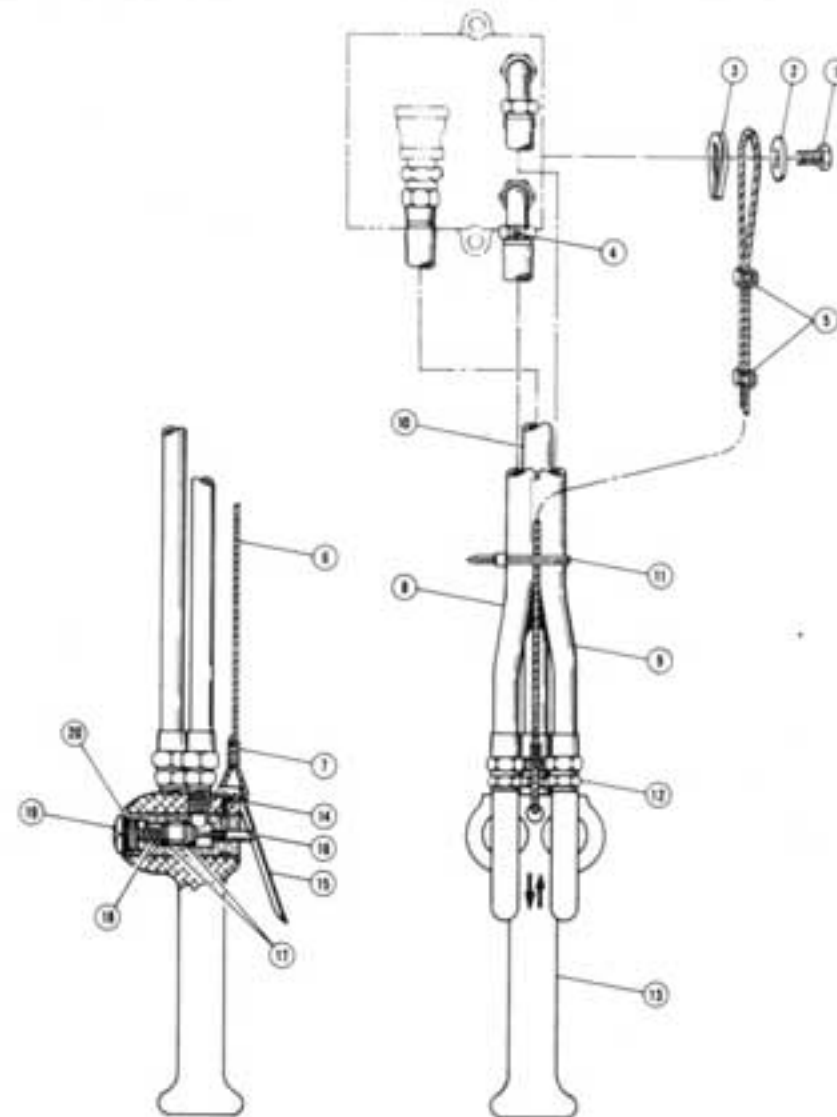


Figure 8-10. SPECIAL PARTS TABLE — CORROSION RESISTANT AND SPARK RESISTANT MODELS.

Fig. No.	Ref. No.	Part Number	Description	Corrosion Resistant			Spark Resistant		
				1 Ton	2 Ton	3 Ton	½ Ton	1 Ton	2 Ton
8-1	1	BAH-5400	Hook Assembly-Upper with Latch	—	—	—	1	—	—
	11	BAH-5401	Cover — Counterweighted	—	—	—	1	—	—
		BAH-5402	Cover — Counterweighted	—	—	—	—	1	—
		BAH-5403	Cover — Counterweighted	—	—	—	—	—	1
	24	BAH-5430	Guide Assem. — Coil Load Chain	—	—	—	1	1	1
	25	BAH-5404	Chain Assembly — Coil, Load	1	—	—	—	—	—
		BAH-5405	Chain Assembly — Coil, Load	—	—	—	1	—	—
	30	BAH-5406	Block Assembly — Lower	—	—	—	1	—	—
	32	BAH-5407	Body — Lower Block	—	—	—	1	—	—
	33	BAH-5408	Hook, Nut and Latch Assembly — Lower Block	—	—	—	1	—	—
	34	BAH-5409	Latch Kit — Hook, Lower	—	—	—	1	—	—
	51	BAH-5410	Latch Kit — Hook, Upper	—	—	—	1	—	—
8-2	2	BAH-5411	Hook Assembly-Upper with Latch	—	—	—	—	1	—
	18	BAH-5412	Chain Assembly — Coil, Load	—	1	—	—	—	—
		BAH-5413	Chain Assembly — Coil, Load	—	—	—	—	1	—
	20	BAH-5414	Latch Kit — Hook, Upper	—	—	—	—	1	—
8-3	5	BAH-5415	Hook Assembly-Upper with Latch	—	—	—	—	—	1
	18	BAH-5417	Chain Assembly — Coil, Load	—	—	1	—	—	—
		BAH-5418	Chain Assembly — Coil, Load	—	—	—	—	—	1
8-4	11	BAH-5429*	Gear & Clutch Assembly — Load Brake	—	—	—	1	1	1
	35	BAH-5419	Sprocket — Coil Chain	—	—	—	1	1	1
8-5	—	BAH-5420	Block Assembly-Lower Complete	—	—	—	—	1	—
	—	BAH-5421	Block Assembly-Lower Complete	—	—	—	—	—	1
	10	BAH-5422	Body Assembly — Lower Block	—	—	—	—	—	1
	11	BAH-5423	Hook/Latch & Nut	—	—	—	—	—	1
	12	BAH-5424	Latch Kit — Hook, Lower	—	—	—	—	1	—
	16	BAH-5426	Hook/Latch & Nut	—	—	—	—	1	—
	21	BAH-5427	Body Assembly — Lower Block	—	—	—	—	1	—
8-6	1	BAH-5428	Limit Stop	—	—	—	1	1	1

* This gear and clutch assembly should not be field disassembled. Replace assembly only as clutch pressure is preset at factory based on hoist capacity.

To enable us to expedite your parts order, always give Model and Catalog Numbers of Hoist. (See nameplate.)

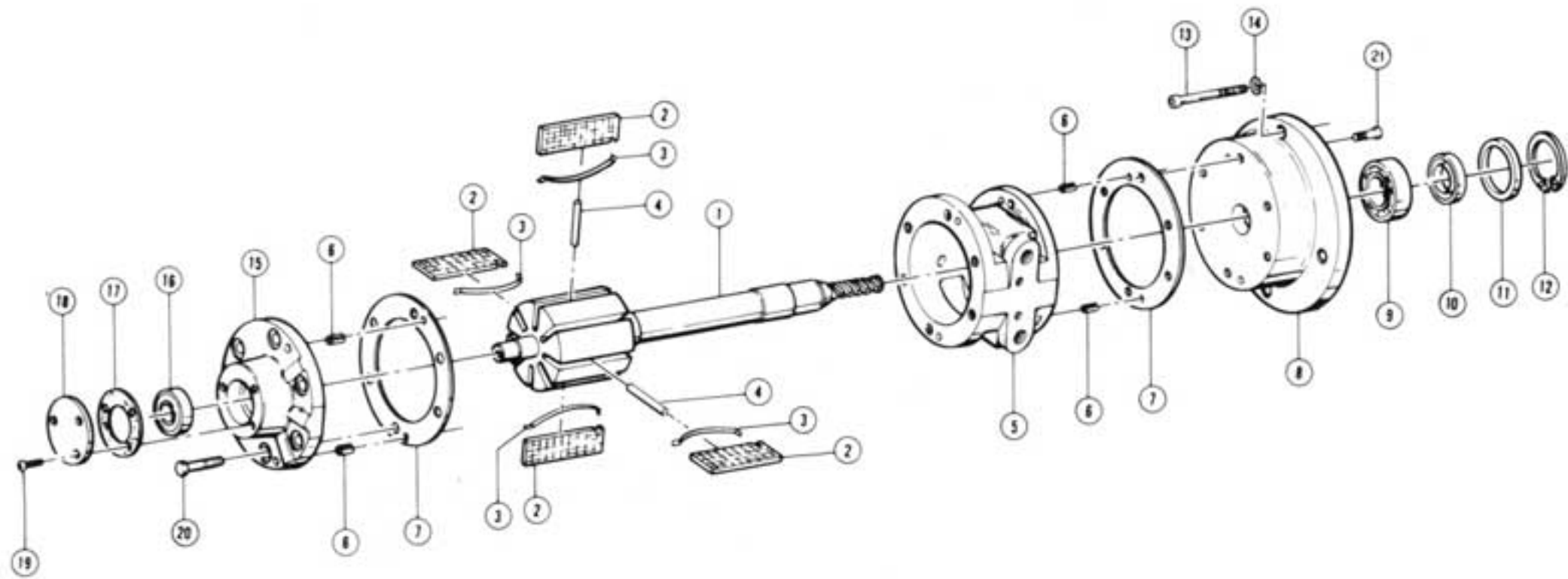


12443

Figure 8-9. PENDANT THROTTLE CONTROL PARTS.

Ref. No.	Part Number	Description	Qty. Req'd.
1	BAH-5300	Cap Screw — Hex Head	1
2	BAH-5301	Washer	1
3	BAH-5302	Thimble — Wire Rope	1
4	BAH-5303	Set Screw	1
5	BAH-5304	Clip — Wire Rope	2
6	BAH-5305	Cable — Strain Relief (Specify Length Required)	
		7 ft. for 10 ft. Lift	1
		12 ft. for 15 ft. Lift	1
		17 ft. for 20 ft. Lift	1
7	BAH-5306	Sleeve — Pressed	1
8		Hose Assembly — Down	
	BAH-5307	For 10 ft. Lift	1
	BAH-5308	For 15 ft. Lift	1
	BAH-5309	For 20 ft. Lift	1
9		Hose Assembly — Up	
	BAH-5310	For 10 ft. Lift	1
	BAH-5311	For 15 ft. Lift	1
	BAH-5312	For 20 ft. Lift	1
10		Hose Assembly — Supply	
	BAH-5313	For 10 ft. Lift	1
	BAH-5314	For 15 ft. Lift	1
	BAH-5315	For 20 ft. Lift	1
11	BAH-5316	Tie — Cable	2
12	BAH-5317	Adaptor Fitting	3
13	BAH-5318	Pendant Throttle Handle Assembly — Complete (Includes Ref. Nos. 14 through 20 plus handle)	1
14	BAH-5319	Pin — Throttle Lever	1
15	BAH-5320	Throttle Lever	2
16	BAH-5321	Valve — Throttle	2
17	BAH-5322	Ring — Throttle Valve Seal	4
18	BAH-5323	Spring — Throttle Valve	2
19	BAH-5324	Cap — Throttle Valve	2
20	BAH-5325	Seal — Throttle Valve Cap	2

To enable us to expedite your parts order, always give Model and Catalog Numbers of Hoist. (See nameplate.)

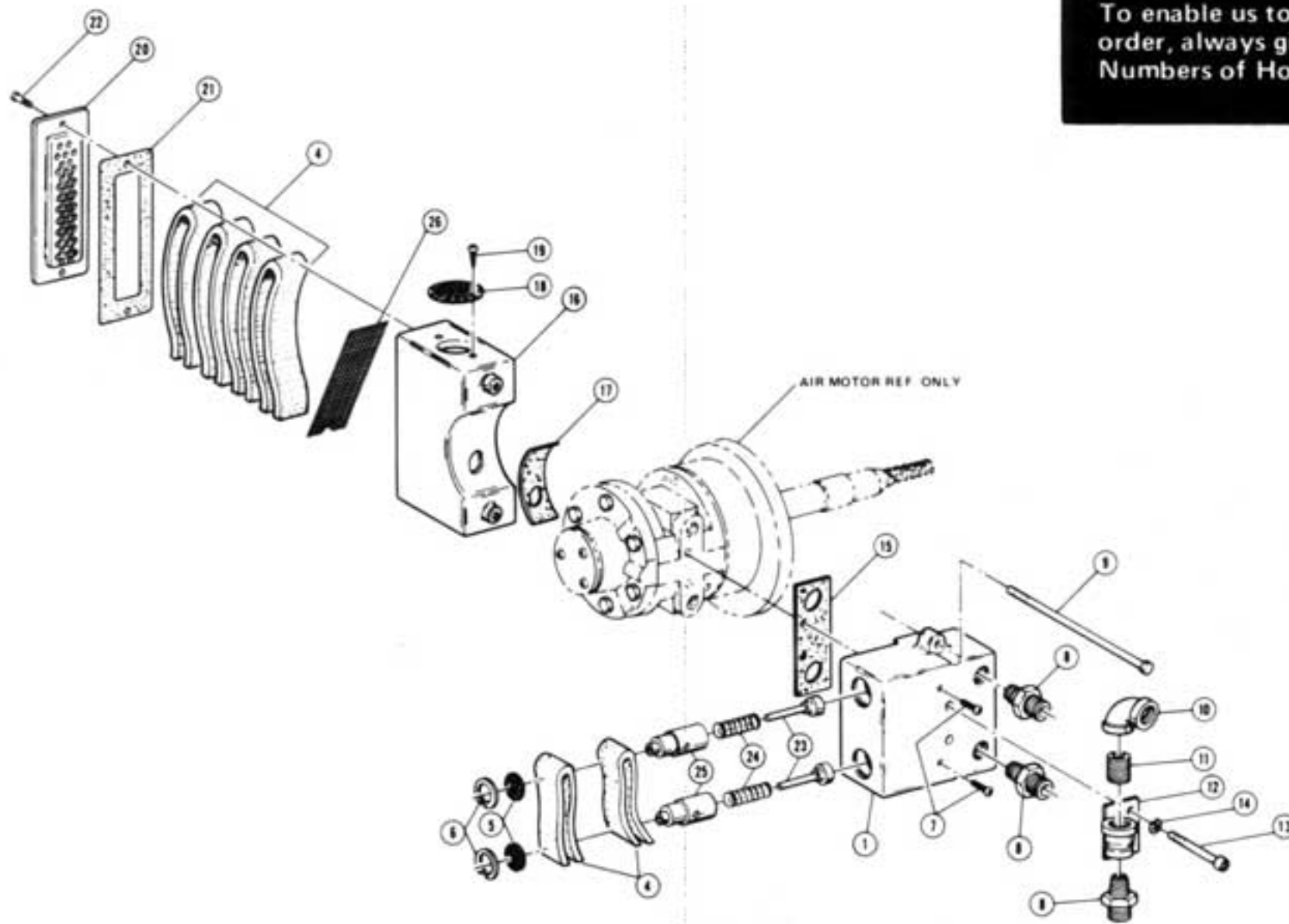


12442A

Figure 8-8. AIR MOTOR PARTS.

Ref. No.	Part Number	Description	Qty. Req'd.
	BAH-5200	Air Motor Assembly	1
1	BAH-5201	Rotor and Shaft Assembly	1
2	BAH-5202	Vane	8
3	BAH-5203	Spring — Vane	8
4	BAH-5204	Push Pin	4
5	BAH-5205	Body — Air Motor	1
6	BAH-5206	Pin — Dowel	4
7	BAH-5207	Gasket — Body	2
8	BAH-5208	End Plate — Drive End	1
9	BAH-5209	Bearing — Drive End	1
10	BAH-5210	Shaft Seal	1
11	BAH-5211	Seal Adaptor	1
12	BAH-5212	Ring — Retaining	1
13	BAH-5213	Cap Screw — Hex Socket	4
14	BAH-5214	Lockwasher — Spring Type	4
15	BAH-5215	End Plate — Dead End	1
16	BAH-5216	Bearing — Dead End	1
17	BAH-5217	Gasket — End Cap	1
18	BAH-5218	End Cap — Dead End	1
	BAH-5219	End Plate Puller Tool (Not Shown)	—
19	BAH-5220	Screw	3
20	BAH-5221	Screw	6
21	BAH-5222	Screw	6

To enable us to expedite your parts order, always give Model and Catalog Numbers of Hoist. (See nameplate.)



12441A

Figure 8-7. SUPPLY HEAD AND MUFFLER PARTS.

Ref. No.	Part Number	Description	Qty. Req'd.
1	BAH-5100	Supply Head	1
2*	BAH-5101	Valve Support	2
3*	BAH-5102	Valve Guide Assembly	2
4	BAH-5103	Muffling Material	6
5	BAH-5104	Screen — Exhaust Valve	2
6	BAH-5105	Ring — Internal Retaining	2
7	BAH-5106	Screw — Self Tapping	2
8	BAH-5107	Adaptor Fitting	3
9	BAH-5108	Cap Screw — Hex Head	2
10	BAH-5109	Elbow — Reducing	1
11	BAH-5110	Nipple — Close Pipe	1
12	BAH-5111	Coupling Assembly	1
13	BAH-5112	Cap Screw — Hex Socket	2
14	BAH-5113	Lockwasher — Spring Type	2
15	BAH-5114	Gasket — Supply Head	1
16	BAH-5115	Muffler Body	1
17	BAH-5116	Gasket — Muffler	1
18	BAH-5117	Screen — Muffler	1
19	BAH-5118	Screw — Drive	2
20	BAH-5119	Muffler Cover	1
21	BAH-5120	Gasket — Muffler Cover	1
22	BAH-5121	Screw — Pan Head	2
23*	BAH-5123	Stem — Valve	2
24*	BAH-5124	Spring — Valve	2
25*	BAH-5125	Sleeve — Valve	2
26	BAH-5126	Screen — Muffler	1

* Reference Numbers 23, 24, and 25 replace Reference Numbers 2 and 3 used on earlier model hoists.

This diagram shows an exploded view of a mechanical assembly. It consists of four numbered parts:

- 1**: A large, rectangular base plate with a complex, stepped profile and several circular holes.
- 2**: A long, cylindrical shaft or pin.
- 3**: A circular disc or washer with a gear-like pattern on its outer edge.
- 4**: A smaller, L-shaped component with a flat base and a vertical flange.

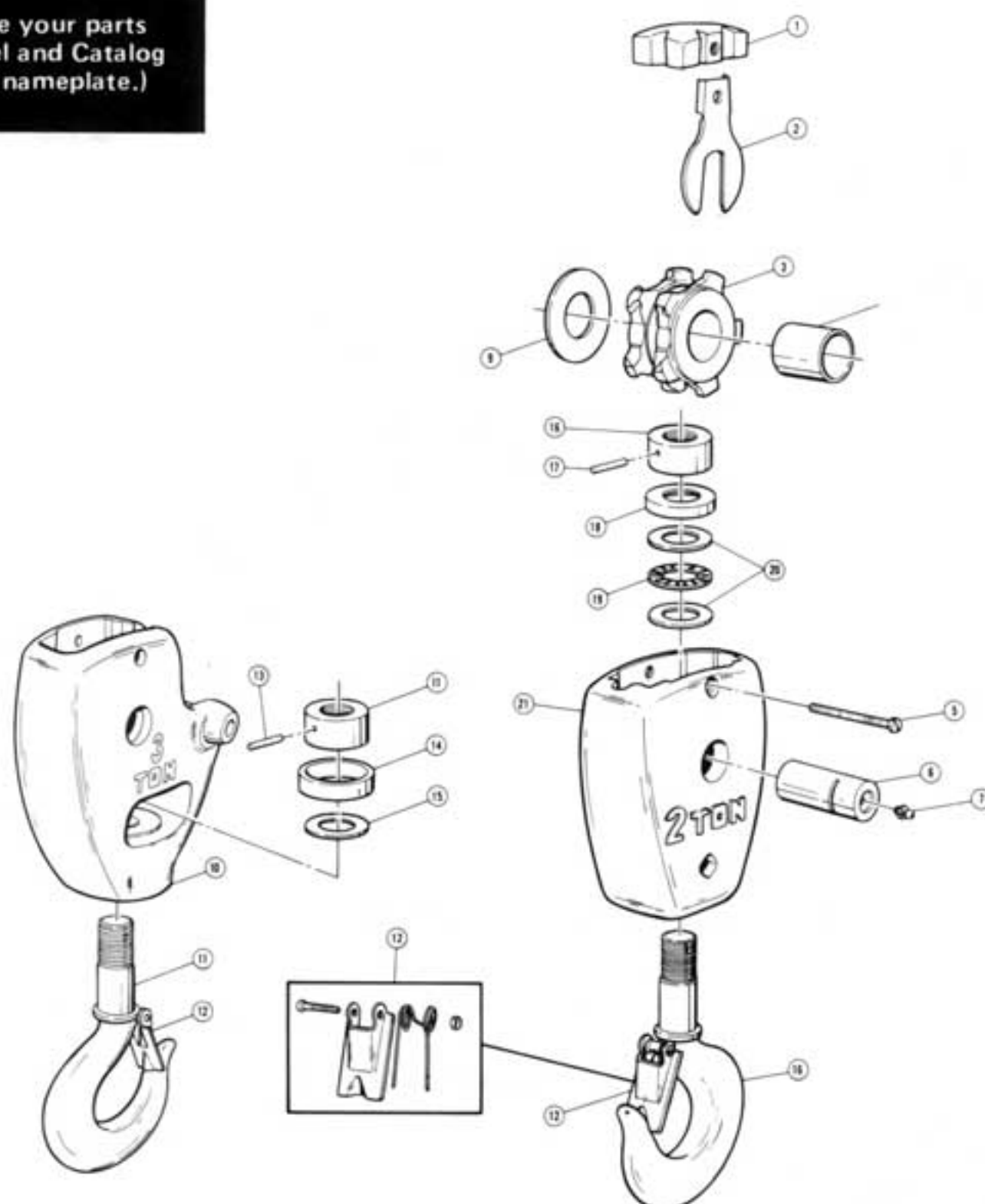
 The diagram illustrates how these parts are assembled, with the shaft (2) passing through the base (1) and the disc (3) positioned at the end of the shaft. The L-shaped part (4) is shown separately, likely representing a component that attaches to the base (1).

Figure 8-6. LIMIT STOP AND PARTS.

* On 2 and 3 line hoists only.

This image shows a single page of white paper with horizontal ruling lines. The lines are evenly spaced and run across the width of the page. There are no margins, text, or other markings on the paper.

To enable us to expedite your parts order, always give Model and Catalog Numbers of Hoist. (See nameplate.)



12439

Figure 8-5. 2 & 3 TON LOWER BLOCK ASSEMBLIES.

Ref. No.	Part Number	Description	Quantity Required	
			2 Ton	3 Ton
	BH-2219	Block Assembly — Lower Complete	1	—
	BH-2218	Block Assembly — Lower Complete	—	1
1	BH-2202	Guide — Center	1	1
2	BH-2203	Lock — Sprocket Pin	1	1
3	BH-2204	Sprocket — Coil Chain	1	1
4	BH-2205	Bushing — Sprocket	1	1
5	BH-2206	Screw — Fillister Head, Self locking	1	1
6	BH-2207	Pin — Sprocket	1	1
7	BH-2208	Fitting — Hydraulic Drive	1	1
9	BH-2210	Washer, Thrust	1	1
10	BH-2211	Body Assembly — Lower Block	—	1
11	BH-2212	Hook /Latch & Nut (Includes Items 12, 13 & 15)	—	1
12	BH-2213	Latch Kit, Hook	1	—
	BH-2214	Latch Kit, Hook	—	1
13	BH-2215	Pin, Grooved	—	1
14	BH-2216	Shroud	—	1
15	BH-2217	Washer, Thrust	—	1
16	BH-2220	Hook/Latch & Nut (Includes Items 12 & 17)	1	—
17	BH-2221	Pin, Grooved	1	—
18	BH-2222	Shield, Bearing	1	—
19	BH-2223	Bearing Assembly — Needle, Thrust	1	—
20	BH-2224	Washer, Thrust	2	—
21	BH-2225	Body — Lower Block	1	—

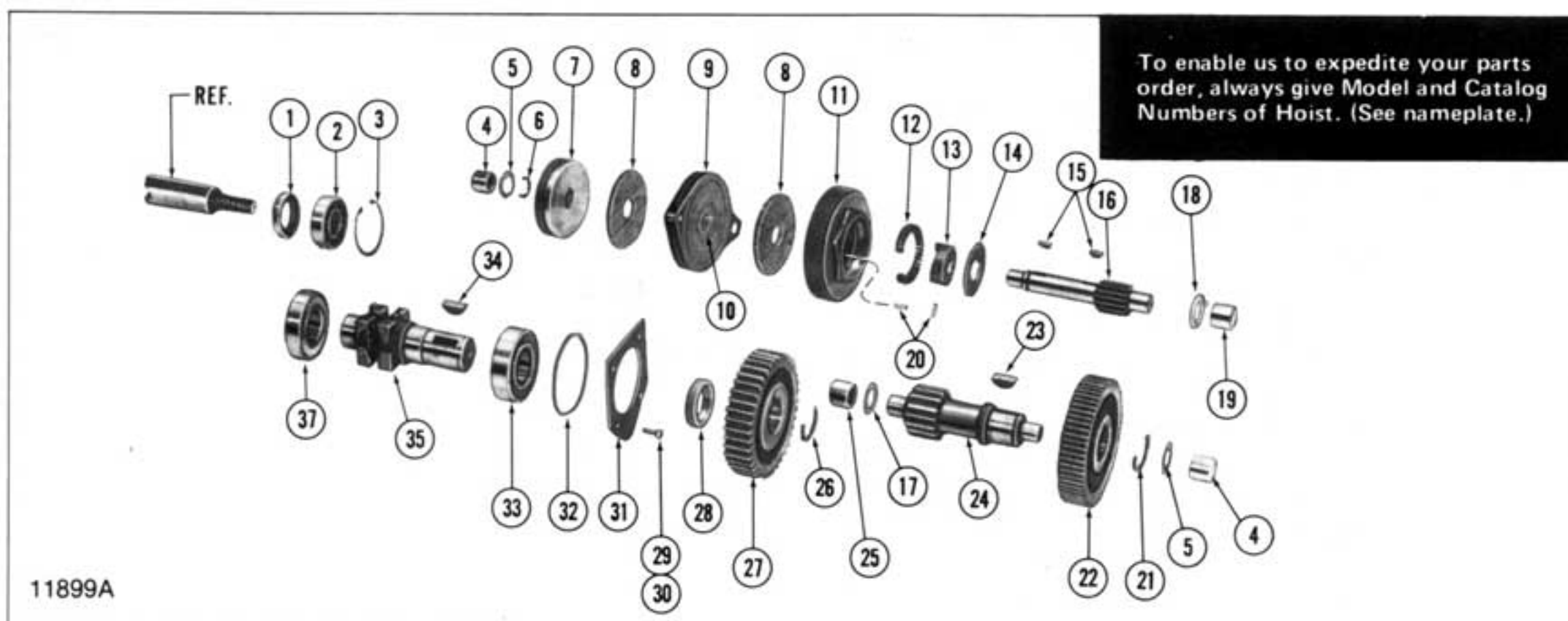


Figure 8-4. GEARING AND LOAD BRAKE PARTS.

Ref. No.	Part Number	Description	Qty. Req'd.
1	BH-1201	Seal — Oil, Motor Shaft	1
2	BH-1202	Bearing Assembly — Ball, Motor Shaft	1
3	BH-1203	Ring — Retaining, Internal	1
4	BH-1220	Bearing Assembly — Needle, 5/8" I.D.	2
5	BH-1221	Washer — Thrust, 5/8" I.D.	2
6	BH-1222	Ring — Snap, Brake Flange	1
7	BH-1219	Flange — Load Brake	1
8	BH-1218	Disc — Friction, Load Brake	2
9	BH-1223	Pawl & Ratchet Assembly — Load Brake (Includes item 10)	1
10	BH-1238	Bushing — Ratchet	1
11	BH-1242*	Gear & Clutch Assembly — Load Brake	1
	BH-1245*	Standard Speed Hoist	
	BAH-1245*	Reduced Speed Hoist	
12	BH-1212	Spring — Load Brake (Plain — no color code)	1
13	BH-1216	Cam — Load Brake	1
14	BH-1239	Retainer — Spring, Load Brake	1
15	BH-1210	Key — Woodruff	2
16	BH-1207	Shaft & Integral Pinion — Load Brake	1
	BH-1208	14 Teeth	
	BH-1208	23 Teeth	
17	BH-1206	Washer — Thrust, 11/16" I.D.	1
18	BH-1205	Bearing — Thrust, Bronze	1
19	BH-1204	Bearing Assembly — Needle, 11/16" I.D.	1
20	BH-1214	Pin — Grooved	2
21	BH-1224	Ring — Snap, Intermediate Gear	1
22	BH-1225	Gear — Intermediate	1
	BH-1225	74 Teeth	
	BH-1226	65 Teeth	
23	BH-1236	Key — Woodruff	1
24	BH-1304	Shaft & Integral Pinion — Intermediate	1
25	BH-1237	Bearing Assembly — Needle, 11/16" I.D. (36 roller, greased retained)	1
26	BH-1305	Ring — Snap, Sprocket Gear	1
27	BH-1306	Gear — Sprocket	1
28**	BH-1307	Spacer — Sprocket Gear	1
29	BH-1228	Screw — Fillister Head Machine	4
30	BH-1229	Lockwasher — Spring Type	4
31	BH-1230	Plate — Retainer, Sprocket Bearing	1
32**	BH-1231	Gasket — Ring, Sprocket Bearing	1
33	BH-1232	Bearing Assembly — Ball, Sprocket	1
34	BH-1308	Key — Woodruff, Sprocket	1
35**	BH-1309	Sprocket — Coil Chain	1
37	BH-1235	Bearing Assembly — Ball, Sprocket	1
38	BH-1315	O-Ring	1
39	BH-1316	Seal Disk	1
40	BH-1317	Seal — Oil	1

*This gear and clutch assembly should not be field disassembled. Replace assembly only as clutch pressure is preset at factory based on hoist capacity.

**On later model hoists; Ref. No. 28 is not used, Ref. No. 32 is replaced by Ref. Nos. 38, 39 and 40 and BH-1309 is replaced by BH-1312.

Figure 8-3. UPPER SUSPENSION, LOAD CHAIN AND LOWER BLOCK PARTS. (3 Ton Capacity Hoists) — Continued

Ref. No.	Part Number	Description	Qty. Req'd.
1	BH-1131	Suspension Pin & Nut Assembly	1
2	BH-1132	Spherical Washer	1 Pr.
3	905424	Suspension Lug Kit (Includes Items 1, 2, 4 & 26)	1
4	BH-1134	Pin Grooved	1
5	BH-1135	Hook/Latch & Nut (Includes Items 4, 6, & 7)	1
6	BH-2214	Latch Kit, Hook	1
7	BH-2217	Washer, Thrust	1
8	BH-1138	Hanger	1
9	BH-1139	Connecting Rod Assembly	1
10	BH-1029	Washer, Thrust	1
11	BH-1030	Pin, Grooved	1
12	BH-1142	Pin, Connection	1
13	BH-1143	Ring, Retaining	2
14	BH-1144	Sprocket & Bushing Assembly (Includes Item 15)	1
15	BH-1145	Bushing	2
16	BH-1146	Pin, Sprocket	1
17	BH-1147	Pin, Grooved	1
18	BH-1148**	Chain Assembly, Coil Load	1
19	BH-1149	Link Connecting	1
20	BH-1150	Pin, Anchor	1
21	BH-1151	Pin, Cotter	1
22	BH-1152	Pin, Dowel	1
23	BH-1153	Ring, Retaining	1
24	(See Fig. 8-5)	Block Assembly, Lower, Coil Chain	1
25	BH-2210	Washer, Thrust	2
26	BH-1154	Washer	1
29	BH-1195	Limit Actuator Half	4
30	BH-1196	Bolt — Hex Head	4
31	BH-1197	Lockwasher — Spring Type	4

**Load Chain Assemblies listed are for hoists with standard 10 ft. lifts. Bulk chain is available in 1 ft. increments, part number BH-1069.

NOTES

To enable us to expedite your parts order, always give Model and Catalog Numbers of Hoist. (See nameplate.)

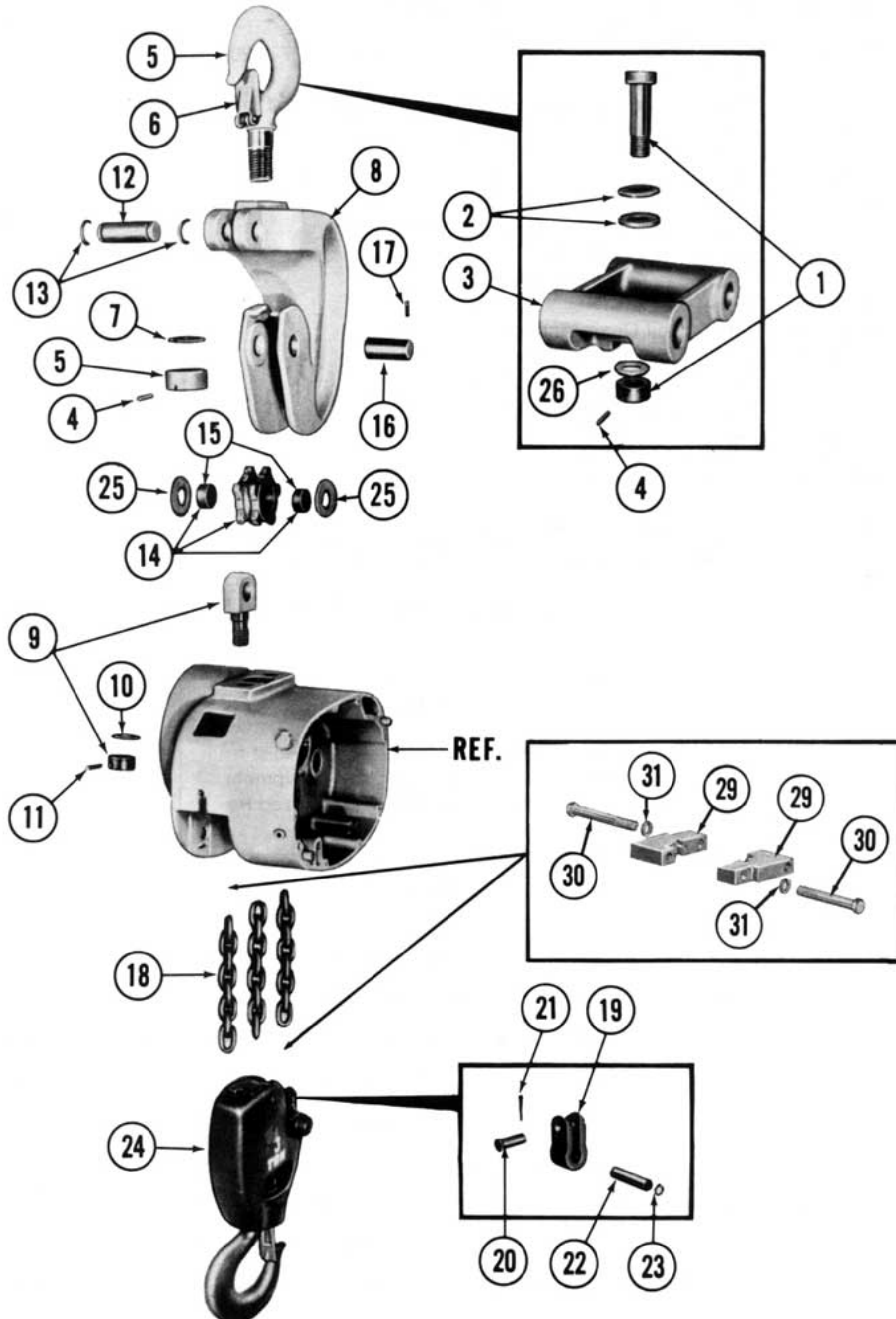


Figure 8-3. UPPER SUSPENSION,
LOAD CHAIN AND LOWER BLOCK PARTS.
(3 Ton Capacity Hoists)

11757D

Figure 8-2. UPPER SUSPENSION, LOAD CHAIN AND LOWER BLOCK PARTS. (2 Ton Capacity Hoists) — Continued

Ref. No.	Part Number	Description	Qty. Req'd.
1	905422	Bracket Assembly Kit — Lug Suspension (Includes Items 6, 8 & 9).	1
2	BH-1102	Hook Assembly — Upper (Includes Items 5, 6, 7 & 20)	1
3	BH-1030	Pin — Drive	3
4	BH-1104	Block Assembly — Upper (Includes Items 3, 10, 11, 14, 16, 19 & 21)	1
5	BH-1106	Lock Assembly — Suspension Bushing	1
6	BH-1107	Lockwasher	3
7	BH-1108	Screw — Hex, Socket Head	2
8	BH-1109	Screw — Hex, Socket Head	1
9	BH-1061	Plate — Lock (Lug Suspension Models Only)	1
10	*	Stud — Upper Block	1
11	*	Anchor — Coil Load Chain	1
14	BH-1111	Pin — Cotter	1
16	BH-1113	Pin — Coil Chain Anchor	1
17	(See Fig. 8-5)	Block Assembly — Lower	1
18	BH-1114**	Chain Assembly — Coil Load	1
19	*	Nut — Upper Block Stud	1
20	BH-2213	Latch Kit — Hook	1
21	BH-1029	Washer — Thrust	1
24	BH-1195	Limit Actuator Half	2
25	BH-1196	Bolt — Hex Head	2
26	BH-1197	Lockwasher — Spring Type	2

*Not available as individual parts. Order upper block assembly, Ref. No. 4.

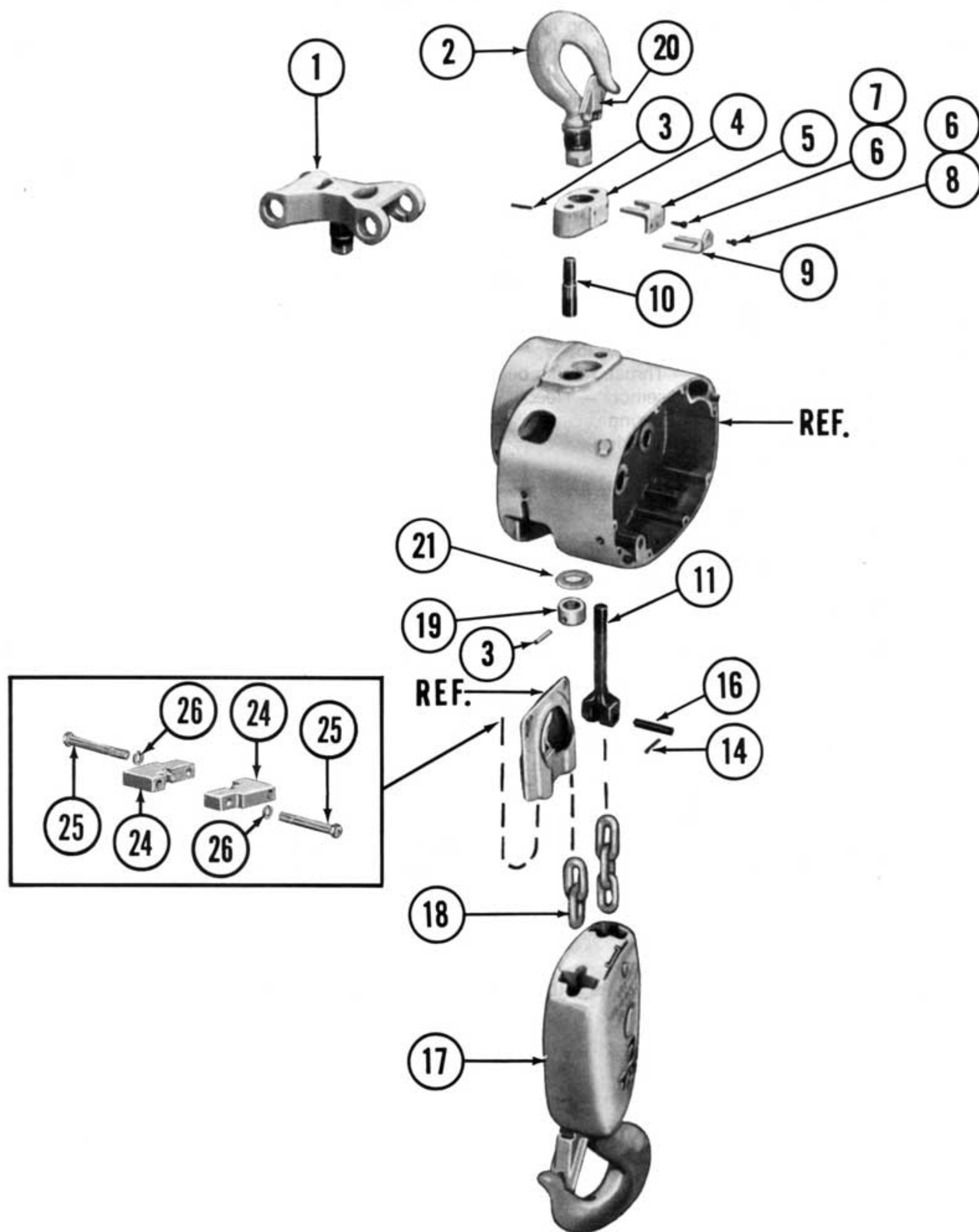
**Load Chain Assemblies listed are for hoists with standard 10 ft. lifts. Bulk chain is available in 1 ft. increments, part number BH-1069.

NOTICE

Always insist on factory approved CM Hoist replacement parts when servicing this equipment. Parts are available from your local recognized Repair Station.

NOTES

To enable us to expedite your parts order, always give Model and Catalog Numbers of Hoist. (See nameplate.)



10251D

Figure 8-2. UPPER SUSPENSION,
LOAD CHAIN AND LOWER BLOCK PARTS.
(2 Ton Capacity Hoists)

Figure 8-1. FRAME AND EXTERNAL PARTS. — Continued

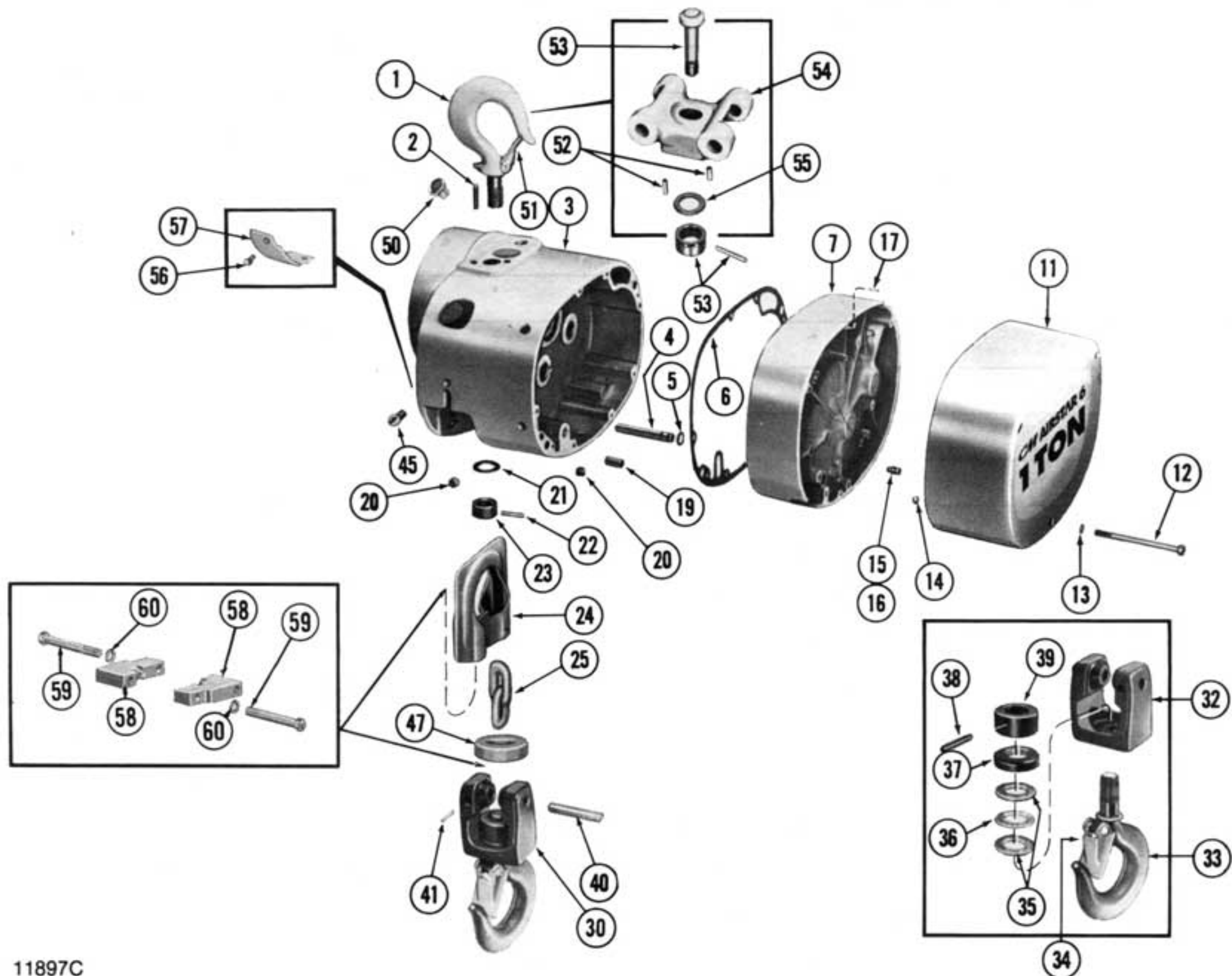
Ref. No.	Part Number	Description	Qty. Req'd.
15	BH-1023	Lockwasher — Spring Type	8
16	BH-1024	Screw — Hex Socket Head	8
17	BH-1025	Pin — Grooved	2
18	BH-1026	Grommet — Not Shown	1
19	BH-1027	Pin — Dowel, gearcase cover	2
20	BH-1028	Plug — Pipe, hex socket, 1/8"	2
21	BH-1029	Washer — Thrust, upper hook	1*
22	BH-1030	Pin — Drive	1*
23	**	Nut — Upper Hook	1*
24	BH-1032	Guide Assembly — Coil Load Chain	1
25	BH-1034***	Chain Assembly — Coil, load	1*
30	BH-1036	Block Assembly — Lower (Includes items 32 through 39)	1*
32	BH-1175	Body — Lower Block	1*
33	BH-1177	Hook, Nut and Latch Assembly — Lower Block	1*
34	BH-1183	Latch Kit — Hook, lower	1*
35	BH-1178	Washer — Thrust, Needle bearing	2*
36	BH-1179	Bearing Assembly — Needle, thrust	1*
37	BH-1180	Shield — Bearing	1*
38	BH-1181	Pin — Spring drive	1*
39	**	Nut — Hook	1*
40	BH-1038	Pin — Connecting, lower block	1*
41	BH-1045	Pin — Spring drive	1*
45	BH-1052	Screw — Fillister Head, Self Locking	1
47	BH-1198	Bumper — Lower Block	1
50	BH-1058	Filler Assembly — Oil	1
51	BH-1183	Latch Kit — Hook (upper)	1*
52	BH-1089	Pin — Spring drive	2
53	BH-1088	Stud — Suspension, nut and pin (Includes item 55)	1*
54	BH-1087	Bracket — Suspension	1*
55	BH-1092	Washer	1*
56	BH-1055	Screw & Integral Lockwasher — Round Head	2
57	BH-1056	Cover — Brake Opening	1
58	BH-1195	Limit Actuator Half	4
59	BH-1196	Bolt — Hex Head	4
60	BH-1197	Lockwasher — Spring Type	4

* Refer to Figure 8-2 for 2 Ton Model Upper Suspension, Load Chain and Lower Block Parts.
Refer to Figure 8-3 for 3 Ton Model Upper Suspension, Load Chain and Lower Block Parts.

** Hook and suspension bolt nuts are not serviced separately. They are available only with hook or bolt as assemblies.

*** Load Chain Assemblies listed are for hoists with standard 10 ft. lifts. Bulk chain is available in 1 ft. increments, part number BH-1069.

To enable us to expedite your parts order, always give Model and Catalog Numbers of Hoist. (See nameplate.)



11897C

Figure 8-1. FRAME AND EXTERNAL PARTS.

Standard Hoists

(Except 2 & 3 Ton Model Upper Suspension, Load Chain & Lower Block)

Ref. No.	Part Number	Description	Qty. Req'd.
1	BH-1001	Hook Assembly — Upper with latch (Includes Items 21, 22, 23 & 51)	1*
2	BH-1002	Pin — Stop, upper hook	1
3	BH-1004	Frame Assembly (Includes 2 bushings, 2 needle bearings, 1 oil seal, 1 oil filler, 2 pipe plugs, and 2 dowel pins.)	1
4	BH-1005	Pin — Support, chain guide	2
5	BH-1006	Gasket — "O" Ring	4
6	BH-1007	Gasket — Gearcase	1
7	BH-1009	Cover Assembly — Gearcase (Includes 2 needle bearings and 2 grooved pins).	1
11	BH-1190	Cover — Counterweighted (1 ton)	1
	BH-1191	(2 ton)	1
	BH-1192	(3 ton)	1
12	BH-1020	Screw — Fillister Head Machine	3
13	BH-1021	Lockwasher — Spring Type	3
14	BH-1022	Ring — Retaining	3

(Continued on following page.)