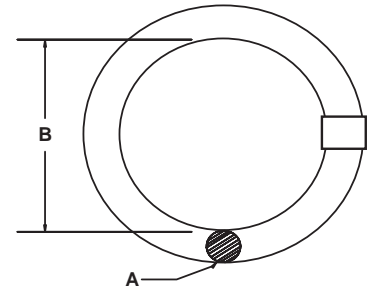


Master Ring



- Made from alloy material
- Proof tested at two times WLL
- Durable orange powder finish

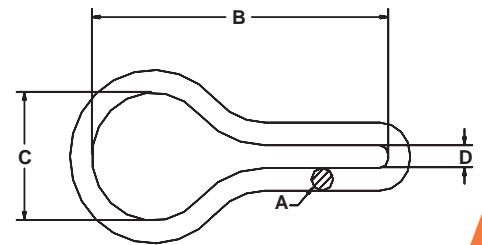


Trade Size	Working Load Limit	Finished Code	Dimensions		Weight	Type and Size of Chain Sling			
			Material Diameter A	Inside Length B		Single	Double	Triple	Quad.
Imperial									
in.	lb.		in.	in.	lb.	in.	in.	in.	in.
1/2	3,500	554611	0.512	2.500	0.52	7/32 & 9/32	—	—	—
5/8	6,100	554613	0.625	3.000	0.99	—	7/32	7/32	7/32
3/4	10,500	554615	0.750	4.000	1.86	3/8	9/32	9/32	9/32
7/8	12,300	554617	0.875	4.000	2.60	1/2	—	—	—
1	18,400	554619	1.000	4.000	3.45	5/8	3/8	—	—
1-1/4	28,300	554623	1.250	5.000	6.98	3/4	1/2	3/8	3/8
1-1/2	31,300	554627	1.500	6.000	11.80	—	—	—	—
1-3/4	53,000	554630	1.750	7.000	18.70	7/8 & 1	5/8	1/2	1/2
2	73,500	554635	2.000	8.000	27.90	1-1/4	7/8	5/8	5/8
2-1/4	88,900	554636	2.250	9.000	39.90	—	—	3/4	3/4
2-1/2	141,000	554640	2.500	10.000	54.60	—	1	7/8 & 1	7/8 & 1

Grab Link



- Made from alloy material
- Proof tested at two times the WLL
- Economical chain adjuster for single slings



Trade Size	Working Load Limit	Product Code	Diameter	Inside Length	Inside Width	Inside Width	Weight
			A	B	C	D	
Imperial							
in.	lb.		in.	in.	in.	in.	lb.
1/2	3,500	554320	0.512	5.500	2.500	0.580	0.81
3/4	7,100	554326	0.750	6.063	2.750	0.625	2.08
1	12,000	554332	1.000	7.625	3.500	0.750	4.59
1-1/4	18,100	554337	1.250	9.250	4.375	1.000	9.16
1-3/8	28,300	554342	1.375	11.250	6.000	1.125	14.28
1-1/2	34,200	554347	1.500	11.750	5.250	1.375	16.75
1-3/4	47,700	554352	1.750	13.750	7.000	1.500	26.69