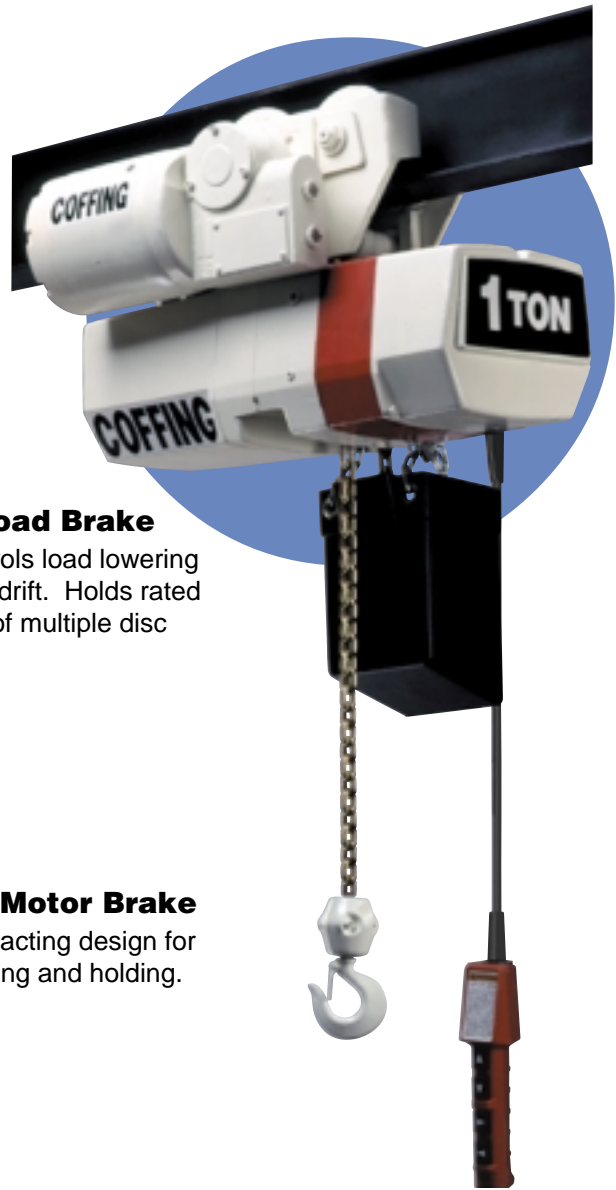


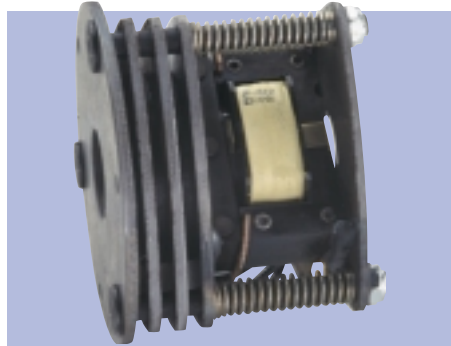
# FEATURES

## EC MODELS Electric Chain Hoists



### Mechanical Load Brake

Weston type, controls load lowering and prevents load drift. Holds rated load independent of multiple disc motor brake.



### Multiple Disc Motor Brake

Heavy duty, direct acting design for positive load spotting and holding.



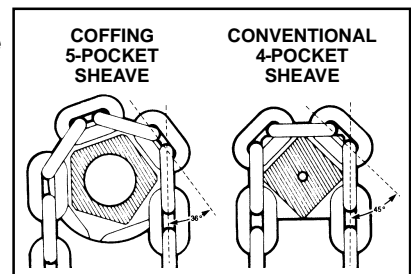
### Ergonomic Designed Push Button Station

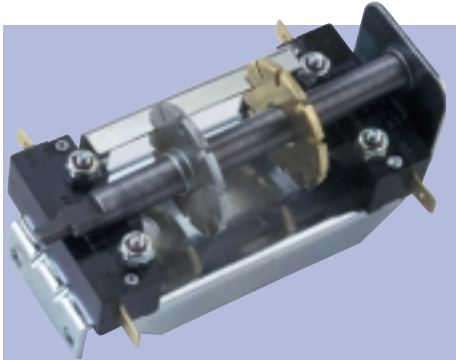
Fits operator's hand for thumb or two-handed operation. 24 Volt Control standard for operator safety. 115 Volt Control available upon request. NEMA 3R (weather resistant). Constructed of glass-filled nylon for severe impact and chemical/corrosive atmosphere resistance.



### Five-Pocket Load Sheave

Increases chain and sheave engagement 25% over hoists with conventional four-pocket sheaves. Provides smoother lifting and reduces chain wear over four-pocket sheaves.





### Limit Switches

Adjustable to regulate upper and lower load travel. Brass nuts standard for improved switch setting and repeatability. Stainless steel limit switch shaft standard.

For more information contact:  
American Crane & Equipment Corp.  
Authorized Distributor  
Tel: 877-503-2972  
Fax: 484-945-0430  
sales@americancrane.com  
www.americancrane.com



### Solid State Starting Switch

Standard on single phase units. Provides greater reliability and starting consistency than centrifugal switches - fewer components to wear out or fail.

# COFFING®

## HOISTS

# EC

## MODELS



### Panel Plate

Provides easy access to controls and motor leads for changing voltage on dual-voltage motors or performing hoist maintenance. Connection wires are numbered to assist maintenance or repair.



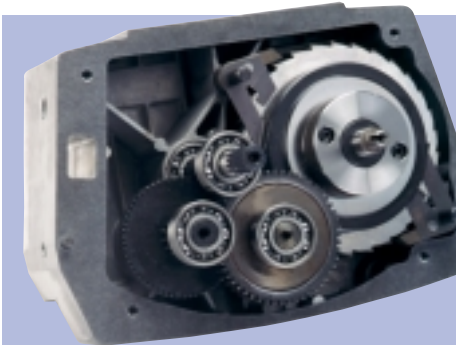
### Chain End Stop Assembly

Fits below dead end link on lifting chain for added measure of safety.



### Overload Clutch

Protects hoist, operator, and supporting structures from damaging overloads, chain jamming, and reverse phasing.



### Gearing and Transmission

First stage helical gearing on EC small frame; first and third stage helical gearing on EC large frame. Transmission gears are precision machined of alloy steel and run in oil bath for longer, quieter operation.