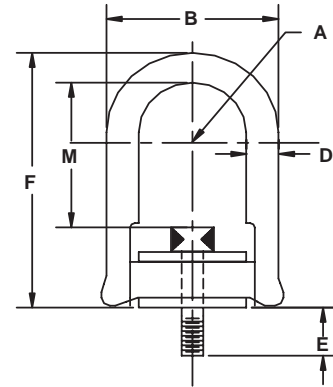


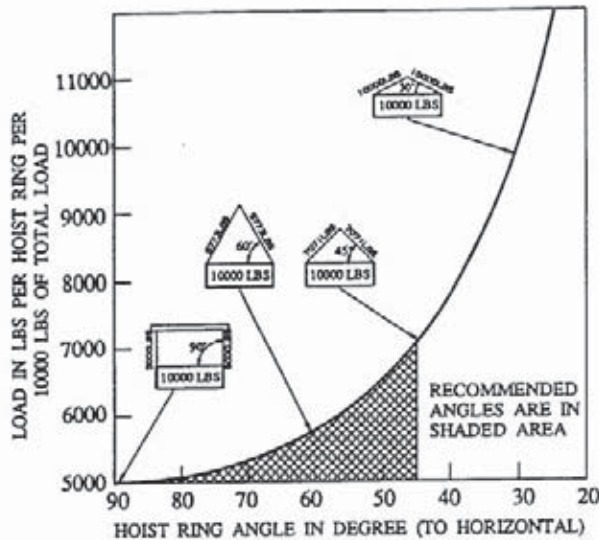
Hoist Rings

Hoist Ring (Metric)

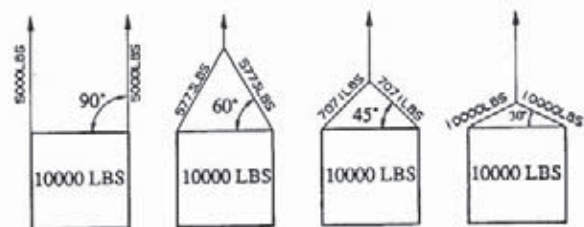


Product Code	Rated Load	Dimensions							Torque Load N.M.	Weight
		A	B	D	E	F	Thread	M		
Imperial										
	Kg	mm	mm	mm	mm	mm		mm		Kg
434212	400	16.50	58.20	11.10	16.00	82.00	M8 x 1.25	38.50	9.50	0.24
434214	400	16.50	58.20	11.10	21.00	82.00	M8 x 1.26	38.50	9.50	0.25
434312	450	16.50	58.20	11.10	16.00	82.00	M10 x 1.5	36.50	16.00	0.25
434314	450	16.50	58.20	11.10	26.00	82.00	M10 x 1.5	36.50	16.00	0.26
434515	1,050	25.40	88.90	19.10	25.00	134.90	M12 x 1.75	65.00	37.00	0.78
434516	1,050	25.40	88.90	19.10	32.00	134.90	M12 x 1.75	65.00	37.00	0.83
464614	1,900	25.40	88.90	19.10	25.00	134.90	M16 x 2.0	62.00	80.00	0.81
464615	1,900	25.40	88.90	19.10	32.00	134.90	M16 x 2.0	62.00	80.00	0.85
434714	2,200	25.40	88.90	19.10	25.00	134.90	M20 x 2.5	58.70	135.00	0.86
434716	2,200	25.40	88.90	19.10	38.00	134.90	M20 x 2.5	58.70	135.00	0.92
434101	3,000	35.60	129.50	25.40	28.00	177.80	M20 x 2.5	81.00	135.00	3.14
434102	4,200	35.60	129.50	25.40	28.00	177.80	M24 x 3.0	76.30	311.00	3.29
434103	4,200	35.60	129.50	25.40	38.00	177.80	M24 x 3.0	76.30	311.00	3.30
434105	4,500	35.60	129.50	25.40	38.00	177.80	M30 x 3.5	70.30	311.00	3.44
434107	4,500	35.60	129.50	25.40	48.00	177.80	M30 x 3.5	70.30	311.00	3.55
434401	7,000	50.80	171.50	31.80	67.00	234.20	M30 x 3.5	95.00	637.20	7.26
434402	11,000	50.80	171.50	31.80	67.00	234.20	M36 x 4.0	88.60	1085.50	8.21
434403	12,500	50.80	171.50	31.80	80.00	234.20	M42 x 4.5	88.60	1085.50	10.14
434404	13,500	50.80	171.50	31.80	80.00	234.20	M48 x 5.0	88.60	1085.50	10.59

Angular Lifting Graph



Effect of Hoist Ring Angle on Load



INSTALLATION INSTRUCTIONS: Drill and tap workpiece for hoist ring screw with axis vertical to mounting surface. Work surface should be flat and smooth to provide full 360° flush seating for the bushing flange. (SAFETY NOTE: Some loosening may develop after prolonged service in a permanent installation. It is advisable to periodically re-tighten the mounting screw to maintain the specified torque value.) The use of free fit spacers between the bushing flange and mounting surface is not recommended as this will reduce the safe load rating on angularly applied loads. Hoist ring must be free to swivel 360° and pivot 180° at all times.