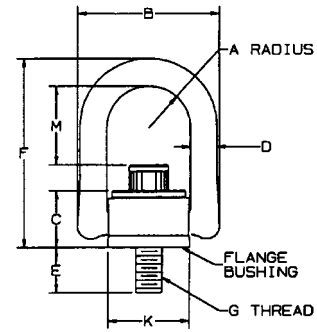


**CM heavy duty hoist rings**

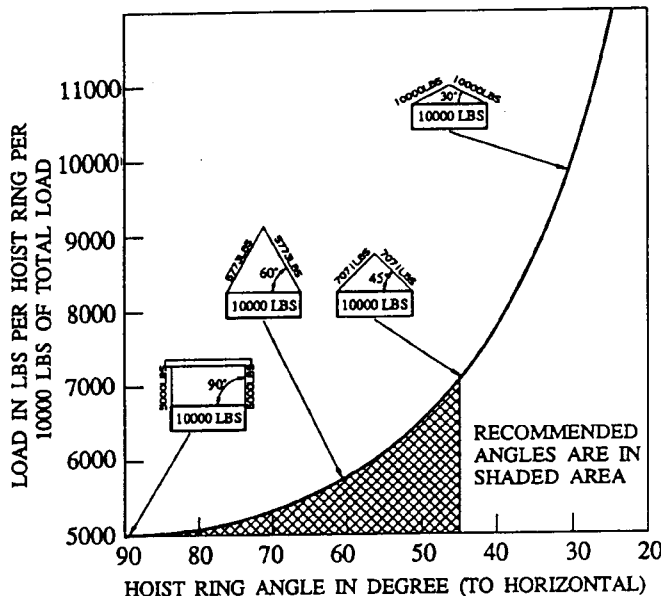
- Side pins and bale constructed of one piece forged alloy steel
- Less moving parts than competitive rings
- Bale and center body are closed die forged to assure superior grain flow and consistent dimensional accuracy
- 100% magnetic particle inspected
- Patented product specified in wide range of industries
- Larger bale allows use of a variety of hook sizes
- Easy disassembly for periodic non-destructive inspection
- Capacities range from 550-30,000 lbs.
- Economically priced



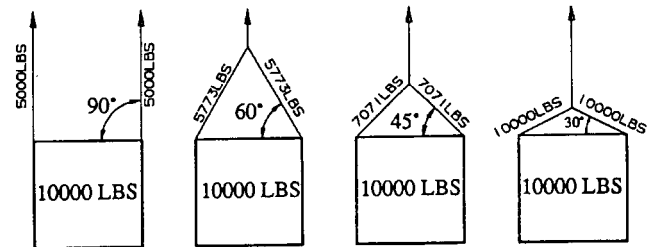
Product code	Working load limit (lbs.)	A	B	C	D	E	F	G	K	RTL* (ft./lbs.)	M	Net Weight (lbs.)
433112	550	.65	2.29	.96	.44	.56	3.23	1/4-20	1.25	5	1.57	.50
433212	800	.65	2.29	.96	.44	.56	3.23	5/16-18	1.25	7	1.51	.52
433214	800	.65	2.29	.96	.44	1.06	3.23	5/16-18	1.25	7	1.51	.54
433312	1,000	.65	2.29	.96	.44	.56	3.23	3/8-16	1.25	12	1.45	.56
433314	1,000	.65	2.29	.96	.44	1.06	3.23	3/8-16	1.25	12	1.45	.58
433515	2,500	1.00	3.50	1.50	.75	1.00	5.31	1/2-13	1.89	28	2.56	1.72
433516	2,500	1.00	3.50	1.50	.75	1.25	5.31	1/2-13	1.89	28	2.56	1.82
433614	4,000	1.00	3.50	1.50	.75	1.00	5.31	5/8-11	1.89	60	2.44	1.78
433615	4,000	1.00	3.50	1.50	.75	1.25	5.31	5/8-11	1.89	60	2.44	1.88
433714	5,000	1.00	3.50	1.50	.75	1.00	5.31	3/4-10	1.89	100	2.31	1.89
433716	5,000	1.00	3.50	1.50	.75	1.50	5.31	3/4-10	1.89	100	2.31	2.02
433102	7,000	1.40	5.10	2.05	1.00	1.20	7.00	3/4-10	2.81	100	3.20	7.23
433103	7,000	1.40	5.10	2.05	1.00	1.70	7.00	3/4-10	2.81	100	3.20	7.25
433101	8,000	1.40	5.10	2.05	1.00	1.20	7.00	7/8-9	2.81	160	3.07	7.33
433105	10,000	1.40	5.10	2.05	1.00	1.45	7.00	1-8	2.81	230	2.95	7.57
433106	10,000	1.40	5.10	2.05	1.00	1.70	7.00	1-8	2.81	230	2.95	7.63
433107	10,000	1.40	5.10	2.05	1.00	2.45	7.00	1-8	2.81	230	2.95	7.81
433401	15,000	2.00	6.75	2.87	1.25	2.63	9.22	1 1/4-7	3.88	470	3.74	16.00
433420	20,000	2.00	6.75	2.87	1.25	2.63	9.22	1 3/8-6	3.88	670	3.62	17.20
433424	24,000	2.00	6.75	2.87	1.25	2.63	9.22	1 1/2-6	3.88	800	3.49	18.10
433427	30,000	2.00	6.75	2.87	1.25	2.96	9.22	2-4 1/2	3.88	800	3.49	22.90
433432	30,000	2.00	6.75	2.87	1.25	2.96	9.22	2-8	3.88	800	3.49	22.90

Replacement screws are available. Contact customer service for details.  
 All sizes in inches unless otherwise specified.  
 \*Recommended torque load.

**Angular Lifting Graph**



**Effect of Hoist Ring Angle on Load**



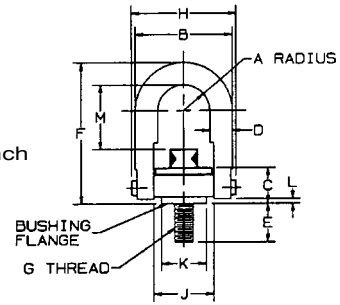
**INSTALLATION INSTRUCTIONS:** Drill and tap workpiece for hoist ring screw with axis vertical to mounting surface. Work surface should be flat and smooth to provide full 360° flush seating for the bushing flange. (SAFETY NOTE: Some loosening may develop after prolonged service in a permanent installation. It is advisable to periodically re-tighten the mounting screw to maintain the specified torque value.) The use of free fit spacers between the bushing flange and mounting surface is not recommended as this will reduce the safe load rating on angularly applied loads. Hoist ring must be free to swivel 360° and pivot 180° at all times.

**\*WARNING**  
 See page 164

**CM specialty engineered hoist rings**

- Bale and shoulder pins machined from alloy steel
- Patented design provides shoulder pin retention with specialized clip
- Easy disassembly for periodic non-destructive inspection
- Capacity range from 550-100,000 lbs.
- Specials available in stainless steel and metric sizes

Standard tolerance  $\pm .030$  inch unless otherwise specified



Product code	Working load limit (lbs.)	A	B	C	D	E $\pm .060$	F $\pm .060$	G	H $\pm .060$	J	K	L	M	RTL* (ft./lbs.)	Weight (lbs.)
423050	550	.43	1.61	.71	3/8	.29	2.67	1/4-20	1.84	1.00	.75	.17	1.33	5	.30
423051	800	.43	1.61	.71	3/8	.29	2.67	5/16-18	1.84	1.00	.75	.17	1.27	7	.31
423052	800	.43	1.61	.71	3/8	.54	2.67	5/16-18	1.84	1.00	.75	.17	1.27	7	.31
423053	1,000	.43	1.61	.71	3/8	.54	2.67	3/8-16	1.84	1.00	.75	.17	1.21	12	.31
423301	2,500	.70	2.40	.93	1/2	1.07	3.77	1/2-13	2.58	1.49	1.25	.20	1.84	28	1.00
423004	2,500	.88	3.25	1.22	3/4	.78	4.78	1/2-13	3.52	1.99	1.50	.16	2.31	28	2.31
•423322	2,500	.88	3.25	1.22	3/4	.78	6.72	1/2-13	3.52	1.99	1.50	.16	4.25	28	2.75
423005	2,500	.88	3.25	1.22	3/4	1.03	4.78	1/2-13	3.52	1.99	1.50	.16	2.31	28	2.31
•423323	2,500	.88	3.25	1.22	3/4	1.03	6.72	1/2-13	3.52	1.99	1.50	.16	4.25	28	2.00
423006	2,500	.88	3.25	1.22	3/4	1.28	4.78	1/2-13	3.52	1.99	1.50	.16	2.31	28	2.31
•423324	2,500	.88	3.25	1.22	3/4	1.28	6.72	1/2-13	3.52	1.99	1.50	.16	4.25	28	2.75
423001	4,000	.88	3.25	1.22	3/4	.78	4.78	5/8-11	3.52	1.99	1.50	.16	2.18	60	2.44
423002	4,000	.88	3.25	1.22	3/4	1.03	4.78	5/8-11	3.52	1.99	1.50	.16	2.18	60	2.44
•423320	4,000	.88	3.25	1.22	3/4	1.03	6.72	5/8-11	3.52	1.99	1.50	.16	4.12	60	2.88
423003	4,000	.88	3.25	1.22	3/4	1.28	4.78	5/8-11	3.52	1.99	1.50	.16	2.18	60	2.44
•423321	4,000	.88	3.25	1.22	3/4	1.28	6.72	5/8-11	3.52	1.99	1.50	.16	4.12	60	2.88
423007	5,000	.88	3.25	1.22	3/4	1.03	4.78	3/4-10	3.52	1.99	1.50	.16	2.06	100	2.56
•423325	5,000	.88	3.25	1.22	3/4	1.03	6.72	3/4-10	3.52	1.99	1.50	.16	4.00	100	3.00
423009	5,000	.88	3.25	1.22	3/4	1.53	4.78	3/4-10	3.52	1.99	1.50	.16	2.06	100	2.56
•423327	5,000	.88	3.25	1.22	3/4	1.53	6.72	3/4-10	3.52	1.99	1.50	.16	4.00	100	3.00
423102	7,000	1.40	4.80	1.71	1	1.04	6.52	3/4-10	5.14	3.00	2.37	.24	3.06	100	6.23
423329	7,000	1.40	4.80	1.71	1	1.04	8.11	3/4-10	5.14	3.00	2.37	.24	4.65	100	7.25
423103	7,000	1.40	4.80	1.71	1	1.54	6.52	3/4-10	5.14	3.00	2.37	.24	3.06	100	6.63
423330	7,000	1.40	4.80	1.71	1	1.54	8.11	3/4-10	5.14	3.00	2.37	.24	4.65	100	6.63
423101	8,000	1.40	4.80	1.71	1	1.04	6.52	7/8-9	5.14	3.00	2.37	.24	2.93	160	6.75
•423328	8,000	1.40	4.80	1.71	1	1.04	8.11	7/8-9	5.14	3.00	2.37	.24	4.52	160	6.75
423105	10,000	1.40	4.93	1.71	1	1.29	6.52	1-8	5.14	3.00	2.37	.24	2.81	230	7.00
•423331	10,000	1.40	4.93	1.71	1	1.29	8.11	1-8	5.14	3.00	2.37	.24	4.40	230	7.00
423106	10,000	1.40	4.93	1.71	1	1.54	6.52	1-8	5.14	3.00	2.37	.24	2.81	230	7.00
•423332	10,000	1.40	4.93	1.71	1	1.54	8.11	1-8	5.14	3.00	2.37	.24	4.40	230	7.00
423107	10,000	1.40	4.93	1.71	1	2.29	6.52	1-8	5.14	3.00	2.37	.24	2.81	230	7.00
•423333	10,000	1.40	4.93	1.71	1	2.29	8.11	1-8	5.14	3.00	2.37	.24	4.40	230	7.00
423401	15,000	1.75	6.00	2.11	1 1/4	1.89	8.73	1 1/4-7	6.50	3.76	3.20	.35	4.12	470	14.00
423202	24,000	2.25	8.00	2.81	1 3/4	2.70	12.47	1 1/2-6	8.55	4.87	4.20	.47	6.41	800	33.75
423200	30,000	2.25	8.00	2.81	1 3/4	2.96	12.47	2-4 1/2	8.55	4.87	4.20	.47	5.41	800	36.00
423501	50,000	3.00	10.50	4.09	2 1/4	4.00	16.87	2 1/2-8	11.67	6.52	5.75	1.12	8.03	2,100	87.50
423503	50,000	3.00	10.50	4.09	2 1/4	4.00	16.87	2 1/2-4	11.67	6.52	5.75	1.12	8.03	2,100	87.50
423600	75,000	3.75	13.00	5.27	2 3/4	5.20	19.50	3-4	14.15	8.10	7.25	1.00	8.48	4,300	166.00
423701	100,000	4.00	14.50	6.06	3 1/4	7.00	22.09	3 1/2-4	15.90	8.60	7.75	1.09	9.28	6,600	240.00

• Long Bar Model  
 \*Recommended Torque Load  
 All dimensions approximate  
 All sizes in inches unless otherwise specified

For more information contact:  
 American Crane & Equipment Corp.  
 Authorized Distributor  
 Tel: 877-503-2972  
 Fax: 484-945-0430  
 sales@americancrane.com  
 www.americancrane.com

**\*▲WARNING**

**Improper Installation and use of hoist rings can cause injury.**

**TO AVOID INJURY:**

- Do not exceed rated load.
- Install rings per instructions. Verify full 360° seating—Retorque periodically.
- Consult angular lifting graph when lifting at other than 90°