

Electromotive Systems IMPULSE® Drive Diagnostics Tools



MAGNETEK MATERIAL HANDLING

Electromotive Systems

Telemotive

Mondel Engineering

YOUR ONE-STOP-SOURCE FOR MATERIAL HANDLING CONTROL SOLUTIONS

Select the Drive Diagnostics Tool that's right for you!

Magnetek's drive support tools enable you to maximize the efficiency of your IMPULSE® variable frequency drives.

IMPULSE•LINK 4.1 WDS



IMPULSE•LINK 4.1 Basic



DataLogger Series 3 (with DataPulse)



Features	<i>Interactive Wireless Diagnostics Hardware & Software Package</i>	<i>Interactive Drive Software Package</i>	<i>Drive Recording Device</i>
Wireless communication (up to 1000 feet)	●		
Log 200 Alarm, 200 Fault, and 1400 Run events	●		●
Log events for multiple drives	●		
Monitor multiple drives at one time	●		
Wireless remote reset	●		
Create new parameter files	●	●	
Modify drive parameters (offline)	●	●	
View and/or Print parameter files in detailed or compact format	●	●	
View parameter descriptions, range, and factory defaults	●	●	
Monitor drive status	●	●	
Copy and Paste information	●	●	
Compare drive parameter (PAR) files	●	●	
Convert parameter files from different software versions (of the same drive model)	●	●	
Display all modified parameters	●	●	
Troubleshoot with advanced diagnostics Help Menus	●	●	
Link to manual through Help Menu	●	●	●
Read/Write drive parameters	●	●	●
Save parameters	●	●	●
Custom default parameters for your application	●		

IMPULSE®•Link 4.1 WDS (Wireless Diagnostics System)

Interactive Wireless Diagnostics Hardware & Software Package



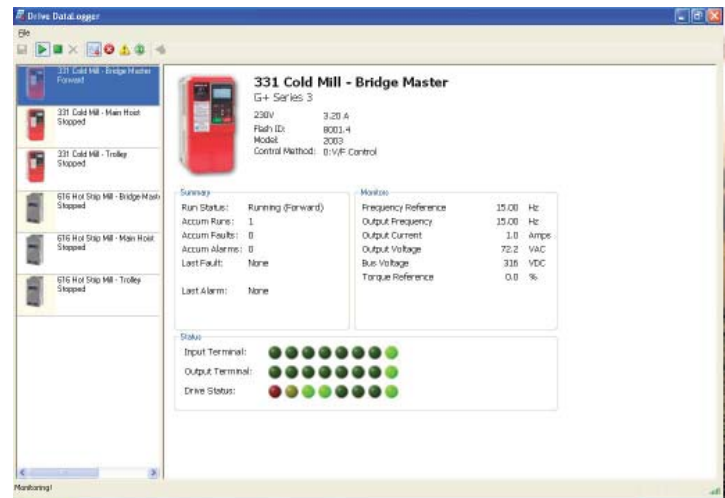
Magnetek Material Handling's **IMPULSE•Link 4.1 Wireless Diagnostics System (WDS)** is a Windows-based, interactive drive software and hardware package that enhances productivity by allowing you to efficiently program, monitor and troubleshoot **multiple** drives from a **remote** location. IMPULSE•Link 4.1 WDS is your wireless network to bridge the gap between your facility's IMPULSE® drives and ethernet network.

KEEP YOUR SYSTEM UP AND RUNNING

Advanced diagnostics provide critical information to keep your system up and running. Whether you have a single crane or multiple cranes in difficult to access locations, IMPULSE•Link 4.1 WDS allows you easy access for monitoring and diagnostics.

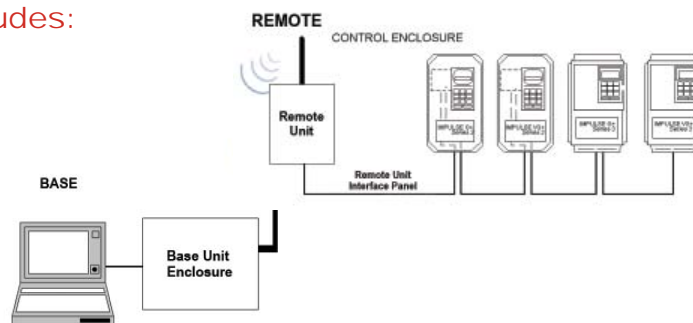
IMPULSE•Link 4.1 WDS allows you to:

- Monitor drive parameters and drive status
- Upload/download drive parameters
- Save and e-mail parameter files, modified constants and DataLogger files for troubleshooting assistance
- Modify parameter settings and create new parameter files
- Reset faults remotely
- View and print detailed or compact drive parameters
- Copy and paste information
- Display Help screens
- Compare drive parameter (PAR) files
- Log fault, alarm and run events from multiple drives (via DataLogger)
- Troubleshoot from a remote location (office, plant floor, or another location)—anytime—day or night, 24/7. No need to climb up on the crane to diagnose and reset a fault.
- Monitor multiple drives at one time with improved Datalogger
- Ability to set custom drive settings for your application



IMPULSE•Link 4.1 WDS Includes:

- Wireless modem base unit
- Wireless modem remote unit
- IMPULSE•Link 4.1 WDS Software & Hardware Key



IMPULSE BASIC SO

- IMPULSE•
- IMPULSE•
- IMPULSE•

For more information on IMPULSE•Link 4.1 WDS, IMPULSE•Link 4.1 Basic

IMPULSE®•Link 4.1 Basic

Interactive Drive Software Package



Our IMPULSE•Link 4.1 Basic is a Windows-based interactive drive software, which allows you to upload, download and monitor parameters to maximize the efficiency of your drive. It's your 1-to-1 link between your PC and your IMPULSE® drives.

MONITOR DRIVE PARAMETERS FROM YOUR PC:

- Upload and download drive parameters
- Modify drive parameters
- Save or create new parameter files
- Program from a keypad display on your PC
- View and print detailed or compact drive parameters
- View complete parameter descriptions
- Monitor parameters and drive status
- Compare drive parameters
- Display all parameters that are not factory default

IMPULSE Link 4.1 Basic - [ParFile1]

File Settings VFD Tools Window Help

Profile: Default Profile

Properties Read Write Help

View: ALL

Parameter	Description	Setting	Unit	CDO	VF
A1-01	Access Level	2:Advanced Level		O	U
A1-02	Control Method	2:Open Loop Ve...		x	
A1-03	Motion	1:Standard Hoist		x	
A1-04	Speed Ref	1:3-SPD Multi-Step		x	A
A1-05	Init Parameters	0:No Initialize		x	A A
A1-06	Enter Password 1	Unlocked		x	U U
A1-08	Enter Password 2	Locked		x	U U
A2-01	User Param 1	No User Data		x	A A
A2-02	User Param 2	No User Data		x	A A
A2-03	User Param 3	No User Data		x	A A
A2-04	User Param 4	No User Data		x	A A

Model: 2003 G+ Series 3, Flash ID: 8000.3

A handheld keypad device labeled JVOP-160 is shown. It has a small screen and several buttons, including MODE SERVICE, MENU, ERG, JOG, DATA ENTER, REV, RESET, RUN, and STOP. The device is connected to the software interface.

IMPULSE•LINK 4.1 WDS & SOFTWARE SUPPORTS:

• G+/VG+ SERIES 3

• G+/VG+ SERIES 2

• P3 SERIES 2

IMPULSE•Link 4.1 Basic is faster and easier to navigate than 4.0 and includes these additional features:

- Copy & Paste feature
- Drag & Drop feature
- Improved troubleshooting through HELP Menus

For more information on IMPULSE•Link 4.1 Basic, and DataLogger Series 3, please call your Magnetek Material Handling Sales Representative.

DataLogger™ Series 3

Drive Recording Device



The DataLogger Series 3 is a microprocessor controlled, flash memory, drive recording device that allows you to easily access the Run, Alarm and Fault histories of Magnetek's IMPULSE•G+/VG+ Series 2 and Series 3 drives. The improved DataLogger is easier to use and offers expanded memory.

RECORDS IMPORTANT DRIVE DIAGNOSTICS

The new DataLogger was designed to include even more memory to log:

- Last 1400 Run events
- Last 200 Alarm events
- Last 200 Fault events

The DataLogger stores:

- Alarm and Fault history
- Trace function for viewing drive data that lead to the Alarm/Fault condition
- Five parameter sets. The parameters can be uploaded, stored and downloaded into drives of the same model and control method.

The DataLogger is powered by the inverter's 5 VDC internal supply when logging data, or through the USB port when connected to the PC.

EASY TO USE

This user-friendly device is now more compact, and simply plugs into the keypad pocket of the IMPULSE Series 3 drive or is connected by cable to the Series 2 drive. All data acquisition is automatic. Data viewing and analysis is available via the new LCD scrolling display, or by downloading and viewing on your PC with DataPulse™ Series 3 Software. No docking station is needed for connection to the PC— just plug it into your USB port.

The Datalogger System consists of four components:

- DataLogger device
- USB Cable for PC Communication
- DataPulse™ Series 3 Software
- Serial Cable for Series 2 Connection

DATA LOGGER WITH DATAPULSE SERIES 3 SUPPORTS:

- IMPULSE•G+/VG+ SERIES 3
- IMPULSE•G+/VG+ SERIES 2

les Representative or our Control Sales Department at 1-800-288-8178.

Magnetek's Material Handling Group

ELECTROMOTIVE SYSTEMS, TELEMOTIVE, MONDEL ENGINEERING

Dedicated to providing the industry expertise, products and services to enhance the success of our customers.

Headquartered in Menomonee Falls, Wisconsin with manufacturing facilities in both Wisconsin and Ontario, Canada, Magnetek's Material Handling Group offers the following products and services.

Engineered Systems & Solutions

Project Evaluation
Application Solutions
Engineering Design
PLC/PC Program Development
System Manufacturing
Project Management
Installation Assistance
Field Startup and Test
Customer Training
Maintenance Support

IMPULSE® AC Adjustable Frequency Drives

230, 460, and 575 Volt Power Platforms
.25- 1,500 Hp
Exclusive Application Software
Specific Crane & Hoist Software

OmniPulse™ Digital Drives

AC in/DC out
15-800 Hp
DC in/DC out
5-500 Hp

MAC™•2000 Motor Acceleration Control

Single & 2 Speed—up to 15.2 Amps
Contactor Panels

Variable Speed Motor Control Panels

Standard Pre-Engineered Systems
Custom Engineered Systems

Motors & Accessories

Standard Inverter Duty AC Induction Motors
Flux Vector Designed Motors

Power Delivery Systems

ELECTROBAR® — 90, 110, 250, 350 Amps
ELECTROBAR® FS — 90, 125, 250, 400 Amps
ELECTROBAR ELITE® — 60, 100, 130, 200 Amps
ELECTROBAR® HX — 400, 700, 1000, 1500 Amps
FABA® Conductor Bar Systems — 100 Amps

ELECTROMOTIVE™ Festooning Systems

Standard Duty
Heavy Duty
Mill Duty

SBP® & SBP2® Pendant Push Button Stations

Standard 2 thru 12 Button Stations
Custom Configured Stations

Radio Remote Control Systems

Pre-Engineered Radio Control Systems

MLTX™
SLTX™
JLTX™
telePilot™
telePendant™
Pendant Style

Engineered Radio Control Systems

MLTX™
SLTX™
JLTX™
Locomotive Control Systems

Collision Avoidance Systems

Laser Guard®
Reflex®

Brakes

200S Industrial Shoe Brakes

4"-19" Diameter
6-2,650 Lb. Ft. Torque
AC, DC, Hydraulic Actuators
AC Explosion-proof Actuators

AISE-NEMA 300M Mill Duty Shoe Brakes

5"-30" Diameter
10-11,000 Lb. Ft. Torque
AC, DC, Hydraulic Actuators
AC Explosion-proof Actuators

400D Heavy Duty Disc Brakes

8"-50" Diameter
50-30,000 Lb. Ft. Torque
AC, DC, Hydraulic Actuators
AC Explosion-proof Actuators

Braketronic™ Control System

Braketronic Controller
Standard Pre-engineered Panel
Mill Duty Foot Pedal (optional)

Brake Kit

Remote Air/Hydraulic Bridge Brake Conversion Kit



Electromotive

WWW.MAGNETEKMH.COM

N49 W13650 Campbell Drive
Menomonee Falls, WI 53051
Phone: 262-783-3500

P.O. Box 13615
Milwaukee, WI 53213
Fax: 262-783-3510

Toll Free Phone: 1-800-288-8178
Toll Free Fax: 1-800-298-3503

Brochure No
Drive Diagnostic Tools-06C
Copyright © 2006
Printed in U.S.A.