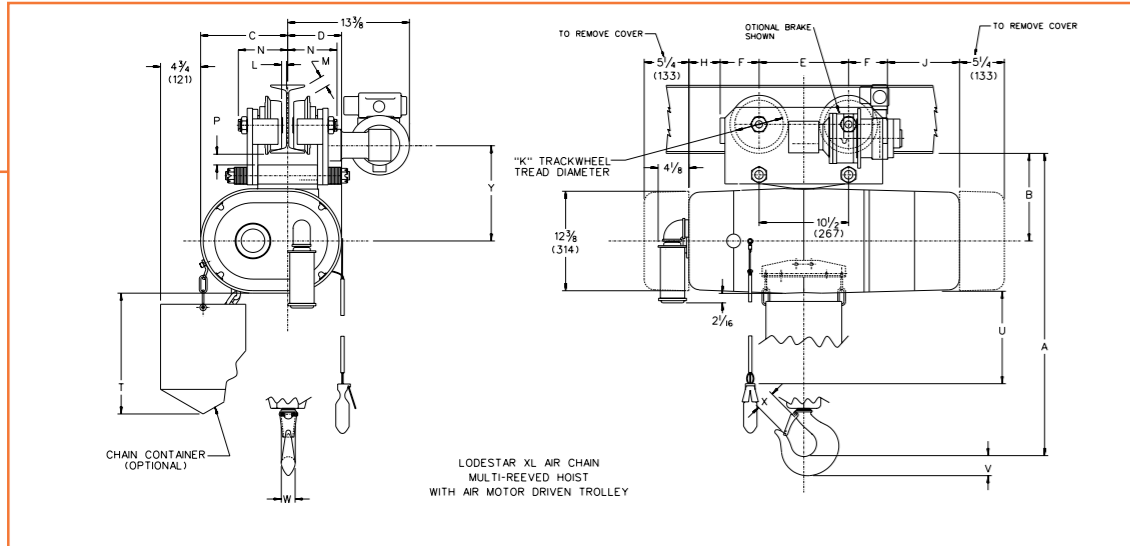


**CM LODESTAR AIR XL HOIST**

Lodestar Air XL with Motor Driven Trolley (3-7½ Ton)



Clearance Dimensions (inches)\*\*

Dimensions	Double Reeved		Triple Reeved
	3 ton capacity	4 & 5 ton capacity	5-7½ ton capacity
A	33½	33¾	34⅝
B	10⅞	10⅞	10⅞
C	11⅜	11⅜	11⅜
D	5½	5½	5½
E	9⅞	12	12
F	3¼	4⅞	4⅞
H	5⅞	2⅞	2⅞
J	10½	7½	7½
K	4	6½	6½
L	⅝	⅝	⅝
M	2⅞	0	0
N	3⅝	3⅞	3⅞
P	⅝	⅞	⅞
S	11⅜	13⅞	13⅞
T (based on 10 ft. lift)	14⅞	14⅞	14⅞
U (based on 10 ft. lift)	6'- 3"	6'- 3"	6'- 3"
V	2¼	2¼	2¼
W	1⅝	1⅝	1⅝
X	2⅞	2⅞	2⅞
Minimum Radius Curve (ft.)	4	6	6
Standard Beam Flange Adj. Range (in.)	4.00-6.25	4.00-6.25	4.00-6.25
Trolley Speed (ft./min) Standard Single Speed	50	50	50

\*\*Dimensions listed are for minimum size "S" beam.



**WARNING**

Failure to properly install, operate and maintain the Lodestar XL Hoist may result in injury and/or property damage.

**TO AVOID INJURY:**

- Installation, maintenance and operation must be carried out as instructed in the manual provided with the Lodestar XL Hoist.
- Do not use the Lodestar XL Hoist for lifting people; special equipment is required for this purpose. Refer to ASME/ANSI A-17 Series and applicable state and local codes for specific requirements.

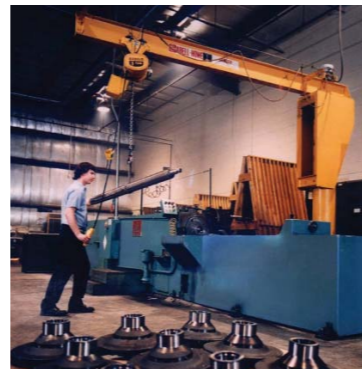
**Everything for every lift.**



LodeRail



Cady Spreader Beams



Jib Cranes



**INDUSTRIAL PRODUCTS**  
 Division of Columbus McKinnon Corporation  
 140 JOHN JAMES AUDUBON PARKWAY  
 AMHERST, NEW YORK 14228-1197  
 800/888-0985 • 716/689-5400 • FAX: 716/689-5644  
 www.cmindustrial.com



Lifting Clamps



Shackles



Herc-Alloy Chain Slings



Hammerlocks



Hooks



Hoist Rings



Load Binders

For more information contact:  
 American Crane & Equipment Corp.  
 Authorized Distributor  
 Tel: 877-503-2972  
 Fax: 484-945-0430  
 sales@americancrane.com  
 www.americancrane.com

**LODESTAR AIR XL**

*Pneumatic Chain Hoist*



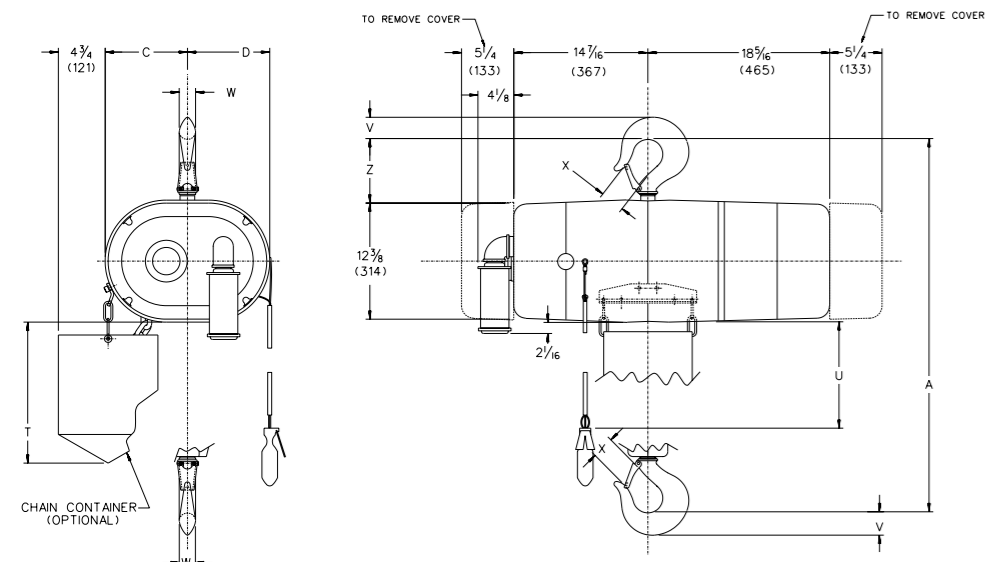
Columbus McKinnon introduces a new line of Lodestar Air XL chain hoists for lifting applications from 2 to 7½ tons. The offering provides heavy-duty hoists featuring variable speeds and higher capacities than traditional air chain hoists. Workers in automotive plants, heavy equipment manufacturing, chemical plants, refineries, and related rugged work environments will experience the same dependability and versatility that they have relied on from CM products for many years.

**The features of the Lodestar Air XL Chain Hoist includes:**

- Lifting capacities up to 7½ tons
- Variable lifting speeds
- Double reeved units with 3-5 ton lifting capacities
- Maximum lifting speed of 30 feet per minute
- Heavy-duty, multiple disc braking system
- Forged ten-pocket oblique-lay liftwheel for smooth chain operation, constant chain speed, and reduced chain wear
- Gearing operated in oil bath for increased lifting life and quiet operation
- Rated H-4, heavy-duty
- Standard overload protector
- Screw-type limit switches
- VME Air Motor
- Factory tested at 125% of rated capacity
- Made in U.S.A.



Lodestar Air XL with Hook Suspension



LODESTAR XL AIR CHAIN HOIST WITH HOOK SUSPENSION



Clearance Dimensions (inches)\*\*

Dimensions	Single Reeved 2 ton capacity	Double Reeved 3-5 ton capacity	Triple Reeved 5-6 ton capacity
A	25	35 <sup>9</sup> / <sub>16</sub>	36 <sup>3</sup> / <sub>16</sub>
C	8 <sup>7</sup> / <sub>16</sub>	11 <sup>3</sup> / <sub>8</sub>	11 <sup>3</sup> / <sub>8</sub>
D	8 <sup>7</sup> / <sub>8</sub>	5 <sup>1</sup> / <sub>2</sub>	5 <sup>1</sup> / <sub>2</sub>
T (based on 10 ft. lift)	14 <sup>3</sup> / <sub>16</sub>	14 <sup>3</sup> / <sub>16</sub>	14 <sup>3</sup> / <sub>16</sub>
U (based on 10 ft. lift)	6'- 3"	6'- 3"	6'- 3"
V	1 <sup>1</sup> / <sub>2</sub>	2 <sup>1</sup> / <sub>4</sub>	2 <sup>1</sup> / <sub>4</sub>
W	1 <sup>1</sup> / <sub>8</sub>	1 <sup>5</sup> / <sub>8</sub>	1 <sup>5</sup> / <sub>8</sub>
X	1 <sup>5</sup> / <sub>16</sub>	2 <sup>1</sup> / <sub>16</sub>	2 <sup>1</sup> / <sub>16</sub>
Z	4 <sup>1</sup> / <sub>8</sub>	5 <sup>1</sup> / <sub>2</sub>	5 <sup>1</sup> / <sub>2</sub>

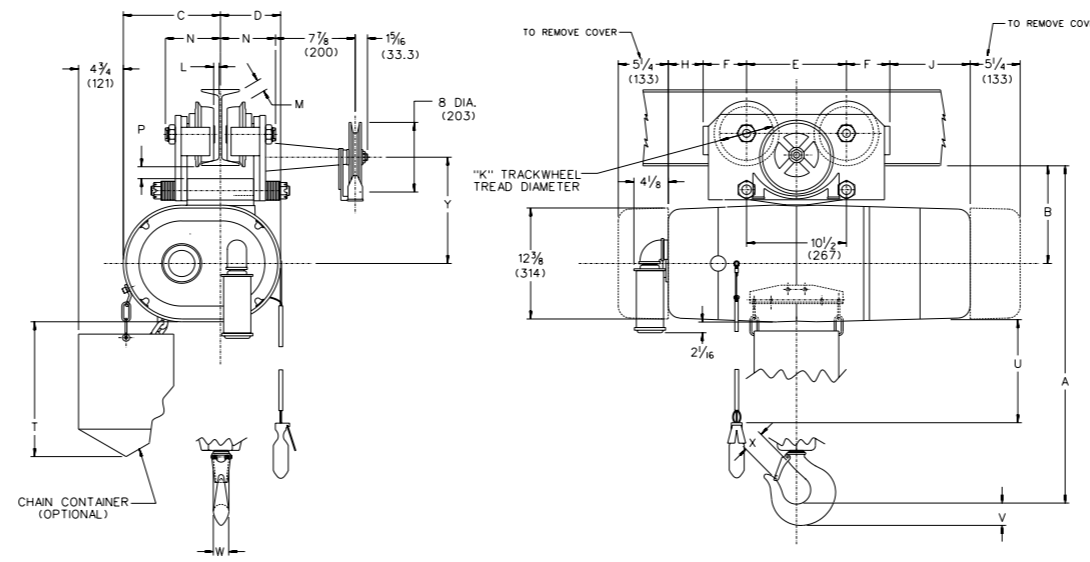
CM<sup>®</sup> Repair/Replacement Policy

All Columbus McKinnon CM<sup>®</sup> Hoists are thoroughly inspected and performance tested prior to shipment. If any properly maintained CM Hoist develops a performance problem due to a material or workmanship defect, as verified by Columbus McKinnon, repair or replacement of the hoist will be made to the original purchaser without charge. This repair/replacement policy applies only to Hoists installed, maintained and operated as outlined in the applicable accompanying CM Hoist Manual, and specifically excludes normal wear, abuse, improper installation, improper or inadequate maintenance, hostile environmental effects, and unauthorized repairs/modifications.

ANSI/OSHA

CM hoists are manufactured in accordance with our interpretation of the ASME/ANSI Code B30.16 for Overhead Hoists and U.S. Occupational Safety and Health Act regulations at the time of manufacture. Users should check each installation for compliance with the application, operation and maintenance requirements of these regulations and standards.

Lodestar Air XL with Plain Trolley and Geared Trolley



LODESTAR XL AIR CHAIN HOIST WITH GEARED TROLLEY

Geared Trolley



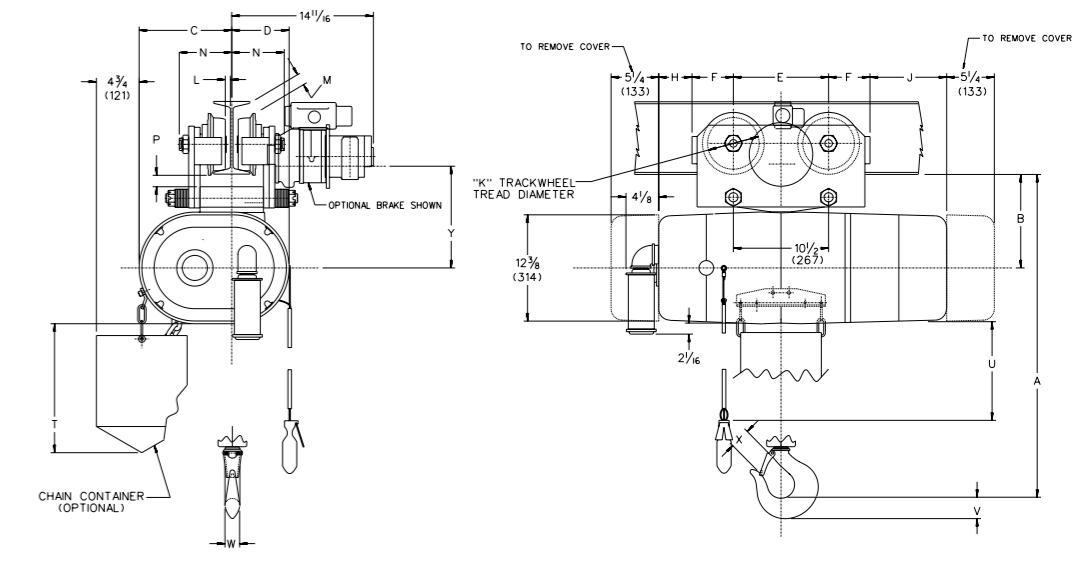
Clearance Dimensions (inches)\*\*

Dimensions	Single Reeved 2 ton capacity	Double Reeved		Triple Reeved 5-7 <sup>1</sup> / <sub>2</sub> ton capacity
		3 ton capacity	4 & 5 ton capacity	
A	28 <sup>1</sup> / <sub>16</sub>	33 <sup>1</sup> / <sub>2</sub>	33 <sup>3</sup> / <sub>4</sub>	34 <sup>3</sup> / <sub>8</sub>
B	9 <sup>3</sup> / <sub>4</sub>	10 <sup>7</sup> / <sub>16</sub>	10 <sup>1</sup> / <sub>16</sub>	10 <sup>1</sup> / <sub>16</sub>
C	8 <sup>7</sup> / <sub>16</sub>	11 <sup>3</sup> / <sub>8</sub>	11 <sup>3</sup> / <sub>8</sub>	11 <sup>3</sup> / <sub>8</sub>
D	8 <sup>3</sup> / <sub>8</sub>	5 <sup>1</sup> / <sub>2</sub>	5 <sup>1</sup> / <sub>2</sub>	5 <sup>1</sup> / <sub>2</sub>
E	9 <sup>1</sup> / <sub>2</sub>	9 <sup>1</sup> / <sub>8</sub>	12	12
F	3 <sup>1</sup> / <sub>2</sub>	3 <sup>1</sup> / <sub>4</sub>	4 <sup>13</sup> / <sub>16</sub>	4 <sup>13</sup> / <sub>16</sub>
H	5 <sup>1</sup> / <sub>4</sub>	5 <sup>1</sup> / <sub>16</sub>	2 <sup>1</sup> / <sub>16</sub>	2 <sup>1</sup> / <sub>16</sub>
J	10 <sup>1</sup> / <sub>16</sub>	10 <sup>1</sup> / <sub>2</sub>	7 <sup>1</sup> / <sub>2</sub>	7 <sup>1</sup> / <sub>2</sub>
K	4 <sup>1</sup> / <sub>16</sub>	4	6 <sup>1</sup> / <sub>2</sub>	6 <sup>1</sup> / <sub>2</sub>
L	1 <sup>1</sup> / <sub>2</sub>	5 <sup>8</sup> / <sub>16</sub>	5 <sup>8</sup> / <sub>16</sub>	5 <sup>8</sup> / <sub>16</sub>
M	1 <sup>1</sup> / <sub>2</sub>	2 <sup>1</sup> / <sub>16</sub>	0	0
N	5	3 <sup>5</sup> / <sub>8</sub>	3 <sup>7</sup> / <sub>8</sub>	3 <sup>7</sup> / <sub>8</sub>
P	1 <sup>1</sup> / <sub>4</sub>	3 <sup>8</sup> / <sub>16</sub>	7 <sup>1</sup> / <sub>16</sub>	7 <sup>1</sup> / <sub>16</sub>
T (based on 10 ft. lift)	14 <sup>3</sup> / <sub>16</sub>	14 <sup>3</sup> / <sub>16</sub>	14 <sup>3</sup> / <sub>16</sub>	14 <sup>3</sup> / <sub>16</sub>
U (based on 10 ft. lift)	6'- 3"	6'- 3"	6'- 3"	6'- 3"
V	1 <sup>1</sup> / <sub>2</sub>	2 <sup>1</sup> / <sub>4</sub>	2 <sup>1</sup> / <sub>4</sub>	2 <sup>1</sup> / <sub>4</sub>
W	1 <sup>1</sup> / <sub>8</sub>	1 <sup>5</sup> / <sub>8</sub>	1 <sup>5</sup> / <sub>8</sub>	1 <sup>5</sup> / <sub>8</sub>
X	1 <sup>5</sup> / <sub>16</sub>	2 <sup>1</sup> / <sub>16</sub>	2 <sup>1</sup> / <sub>16</sub>	2 <sup>1</sup> / <sub>16</sub>
Y*	11 <sup>9</sup> / <sub>16</sub>	12 <sup>7</sup> / <sub>8</sub>	11 <sup>1</sup> / <sub>8</sub>	11 <sup>1</sup> / <sub>8</sub>
Z*	-	19 <sup>1</sup> / <sub>8</sub>	19 <sup>1</sup> / <sub>8</sub>	19 <sup>1</sup> / <sub>8</sub>
Minimum Radius Curve (ft.)	4	4	6	6
Standard Beam Flange Adj. Range (in.)	3.33-5.55	4.00-6.25	4.00-6.25	4.00-6.25

\*Geared Trolley Dimensions Only

\*\*Dimensions listed are for minimum size "S" beam.

Lodestar Air XL with Motor Driven Trolley (2 Ton)



LODESTAR XL AIR CHAIN HOIST SINGLE REEVED WITH AIR MOTOR DRIVEN TROLLEY



Clearance Dimensions (inches)\*\*

Dimensions	Single Reeved 2 ton capacity
A	28 <sup>1</sup> / <sub>16</sub>
B	9 <sup>3</sup> / <sub>4</sub>
C	8 <sup>7</sup> / <sub>16</sub>
D	8 <sup>7</sup> / <sub>8</sub>
E	9 <sup>1</sup> / <sub>2</sub>
F	3 <sup>1</sup> / <sub>2</sub>
H	5 <sup>1</sup> / <sub>4</sub>
J	10 <sup>1</sup> / <sub>16</sub>
K	4 <sup>1</sup> / <sub>16</sub>
L	1 <sup>1</sup> / <sub>2</sub>
M	1 <sup>1</sup> / <sub>2</sub>
N	5
P	1 <sup>1</sup> / <sub>4</sub>
R	14 <sup>3</sup> / <sub>8</sub>
S	12 <sup>7</sup> / <sub>16</sub>
T (based on 10 ft. lift)	14 <sup>3</sup> / <sub>16</sub>
U (based on 10 ft. lift)	6'- 3"
V	1 <sup>1</sup> / <sub>2</sub>
W	1 <sup>1</sup> / <sub>8</sub>
X	1 <sup>5</sup> / <sub>16</sub>
Minimum Radius Curve (ft.)	4
Standard Beam Flange Adj. Range (in.)	3.33-5.55
Trolley Speed (ft./min)	Standard Single Speed
	65 or 100

\*\*Dimensions listed are for minimum size "S" beam.

WARNING

Failure to properly install, operate and maintain the Lodestar Air XL Hoist may result in injury and/or property damage.

TO AVOID INJURY:

- Installation, maintenance and operation must be carried out as instructed in the manual provided with the Lodestar XL Hoist.
- Do not use the Lodestar XL Hoist for lifting people; special equipment is required for this purpose. Refer to ASME/ANSI A-17 Series and applicable state and local codes for specific requirements.