

Top Running Trolley

100 TON CAPACITY

PRODUCT INFORMATION

DWG. NO:

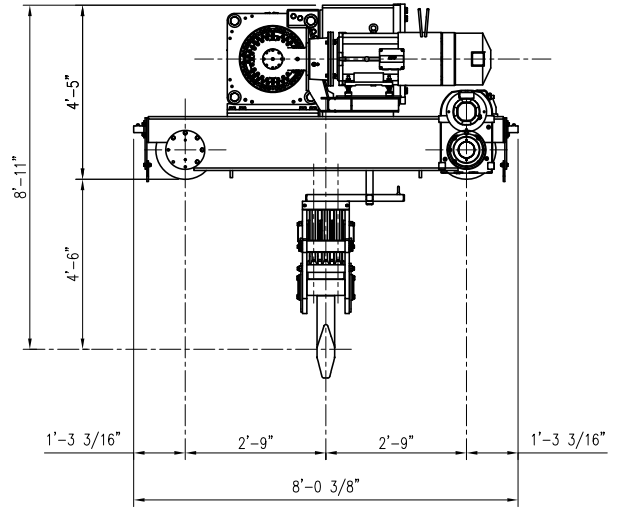
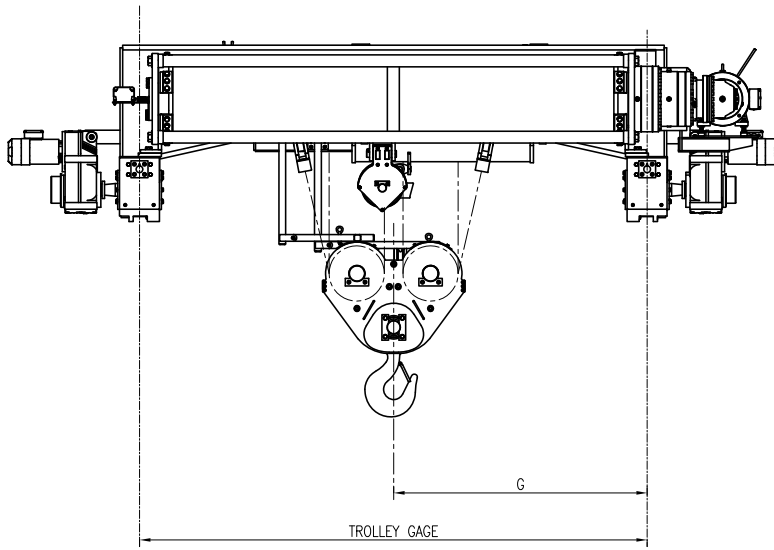
NOR100b18H

DATE: 08/10/2016

REVISION: 1

TYPE: 18

6 PART DOUBLE REEVING



WIRE ROPE $\frac{7}{8}$ " 6 x 36 IWRC EEIP

ACECO RESERVES THE RIGHT TO MAKE CHANGES WITHOUT NOTICE.

HOIST TECHNICAL DATA

CMAA CLASS	"A" & "B"	TROLLEY SPEED	MOTOR DATA	Optional: Hoisting Speed, Trolley Speed, Lift, etc.; consult factory. DRUM DIA. 24" WHEEL DIA. 15 $\frac{3}{4}$ "
POWER SUPPLY	460V-3PH-60HZ	60 F.P.M.	6 HP / 1800 RPM	
		70 F.P.M.	7.5 HP / 1800 RPM	
		90 F.P.M.	10 HP / 1800 RPM	

DIMENSIONAL INFORMATION

HOIST SIZE	TROLLEY GAGE	LIFT FEET	WEIGHT LBS.	MOTOR HP/RPM	SPEED FPM	SWIFT SPEED
8	9' - 0"	38	21,000	50 / 1800	6.5	9
10	11' - 0"	50	27,000			
12	13' - 0"	60	30,000			