

Monorail Trolley

NORMAL PROFILE

15 TON CAPACITY

PRODUCT INFORMATION

DWG. NO:

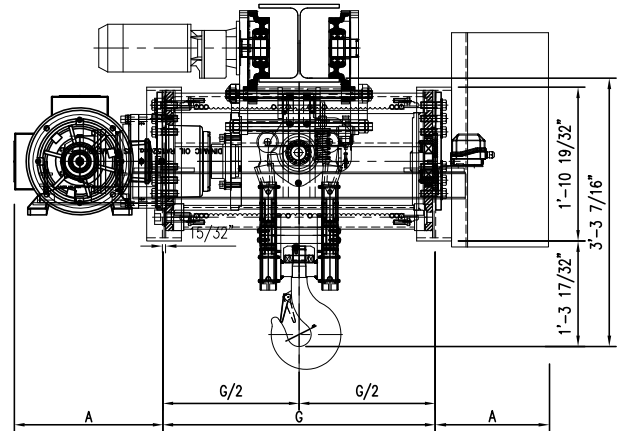
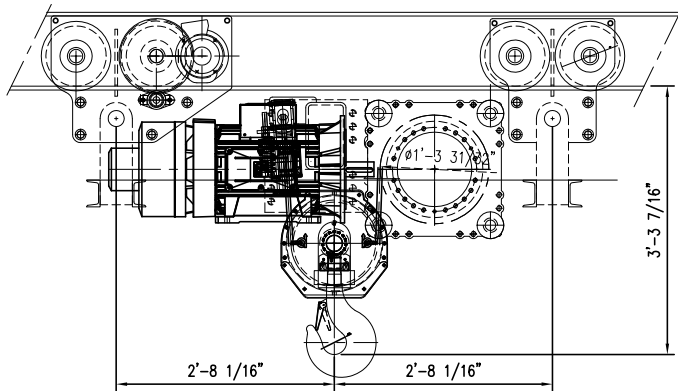
NOR15m32

DATE: 08/10/2016

REVISION: 1

TYPE: 32

2 PART DOUBLE REEVING



WIRE ROPE 5/8" IWRC EIP

ACECO RESERVES THE RIGHT TO MAKE CHANGES WITHOUT NOTICE.

HOIST TECHNICAL DATA

CAPACITY	15 Tons (30,000 lbs.)	TROLLEY SPEED	MOTOR DATA	Optional: Hoisting Speed, Trolley Speed, Lift, Power Supply, etc.; consult factory. DRUM DIA. 16" WHEEL DIA. 8,858"
CLASS	CMAA CLASS "D"	60 F.P.M.	1.5 HP / 1800 RPM	
POWER SUPPLY	460V-3PH-60HZ	70 F.P.M.	2 HP / 1800 RPM	
		90 F.P.M.	3 HP / 1800 RPM	

DIMENSIONAL INFORMATION

G	LIFT	WEIGHT	HOIST	HOIST	SPEED	SPEED	"A"	WEIGHT
(GAGE)	FEET	LBS.	SIZE	MOTOR	VARIABLE	SWIFT LIFT		LBS.
				HP/RPM	FPM	FPM		
2' - 0"	5.7	5,248	2	10 / 1200	9	19	1'-9 27/32"	330
3' - 0"	23.4	5,468	3	10 / 1800	9	19	1'-9 27/32"	330
4' - 0"	41	5,688	4	12.5 / 1200	11	21	1'-9 27/32"	330
5' - 0"	58.8	5,908	5	12.5 / 1800	11	17	1'-9 27/32"	330
6' - 0"	76.6	6,129	6	15 / 1200	12	24	1'-9 27/32"	330
7' - 0"	117	6,349	7	15 / 1800	12	18	1'-9 27/32"	330
8' - 0"	134.6	6,570	8	20 / 1200	16	32	1'-9 27/32"	330
				20 / 1800	16	24	1'-9 27/32"	330