

# Top Running Trolley

## 15 TON CAPACITY

### PRODUCT INFORMATION

DWG. NO:

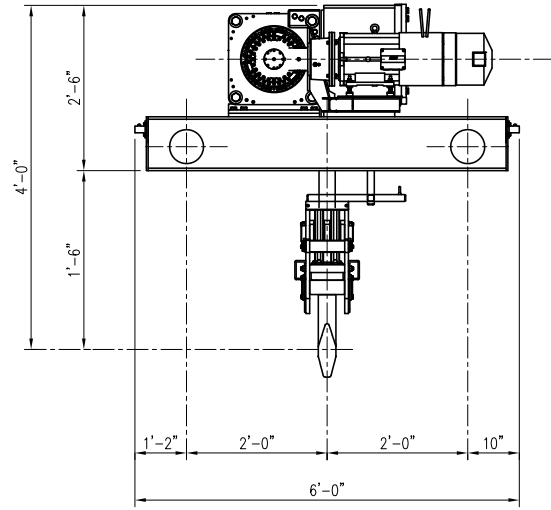
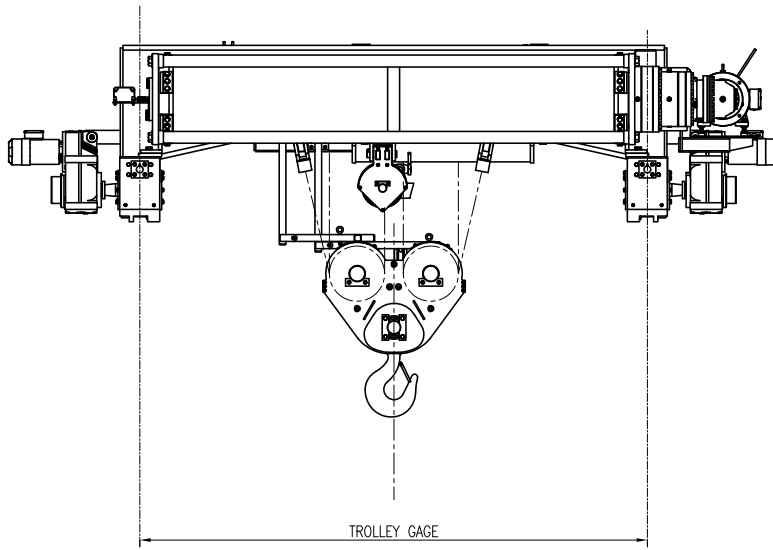
# NOR15s18

DATE: 08/09/2016

REVISION: 1

TYPE: 18

### 4 PART DOUBLE REEVING



WIRE ROPE  $\phi 7/16''$  6 x 36 IWRC EIP

ACECO RESERVES THE RIGHT TO MAKE CHANGES WITHOUT NOTICE.

### HOIST TECHNICAL DATA

CAPACITY	15 Tons (30,000 lbs.)	TROLLEY SPEED	MOTOR DATA	Optional: Hoisting Speed, Trolley Speed, Lift, Power Supply, etc.; consult factory. DRUM DIA. 14.37" WHEEL DIA. 10"
CLASS	CMAA CLASS "D"	60 F.P.M.	.75 HP / 1800 RPM	
POWER SUPPLY	460V-3PH-60HZ	70 F.P.M.	1 HP / 1800 RPM	
		90 F.P.M.	1.5 HP / 1800 RPM	

### DIMENSIONAL INFORMATION

HOIST	HEIGHT OF LIFT	ROPE TRAVEL	"G"	WEIGHT	HOIST	CLASS "D"	"A"
SIZE	FEET	INCHES	GAGE	LBS.	MOTOR	SWIFT LIFT	
					HP/RPM	FPM	
4	33	6	6'-0"	5,000	7.5 / 1200	7	14
5	46	12	7'-0"	5,200	7.5 / 1800	7	11
6	59	18	8'-0"	5,400	10 / 1200	9	19
7	72	24	9'-0"	5,600	10 / 1800	9	14
8	85	30	10'-0"	5,800	12.5 / 1200	11	22
					12.5 / 1800	11	17
					15 / 1200	12	24
					15 / 1800	12	18
					20 / 1200	16	32
					20 / 1800	16	24