

Top Running Trolley

LOW PROFILE

20 TON CAPACITY

PRODUCT INFORMATION

DWG. NO:

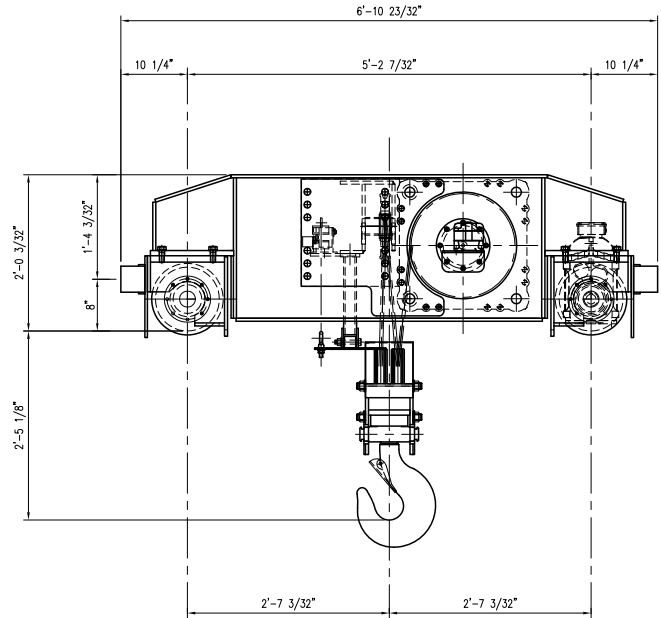
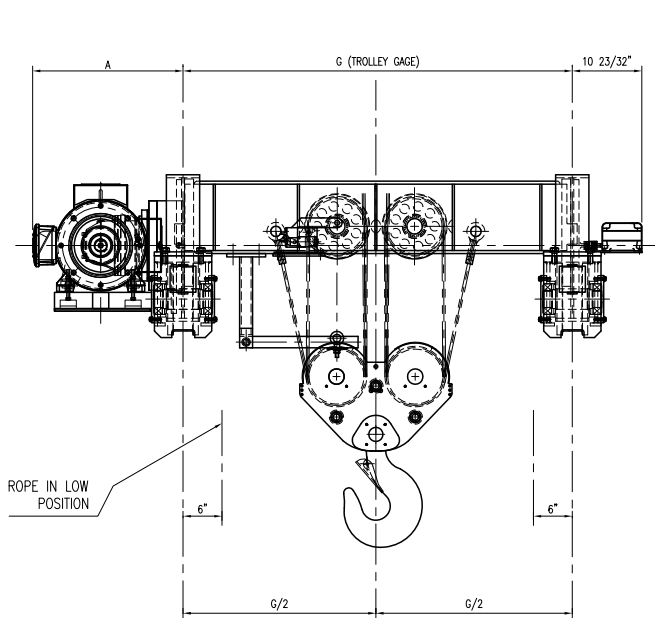
NOR20m16

DATE: 08/09/2016

REVISION: 1

TYPE: 16

4 PART DOUBLE REEVING



WIRE ROPE $\varnothing 1/2" 6 \times 36$ IWRC EEIP

ACECO RESERVES THE RIGHT TO MAKE CHANGES WITHOUT NOTICE.

HOIST TECHNICAL DATA

CAPACITY	20 Tons (40,000 lbs.)	TROLLEY SPEED	MOTOR DATA	Optional: Hoisting Speed, Trolley Speed, Lift, Power Supply, etc.; consult factory. DRUM DIA. 16" WHEEL DIA. 10"
CLASS	CMAA CLASS "D"	60 F.P.M.	1.5 HP / 1800 RPM	
POWER SUPPLY	460V-3PH-60HZ	70 F.P.M.	2 HP / 1800 RPM	
		90 F.P.M.	3 HP / 1800 RPM	

DIMENSIONAL INFORMATION

G	LIFT	WEIGHT	HOIST
(GAGE)	FEET	LBS.	SIZE
4' - 0"	28	5,688	4
5' - 0"	39	5,908	5
6' - 0"	49	6,129	6
7' - 0"	60	6,349	7
8' - 0"	71	6,570	8
9' - 0"	81	7,011	9
10' - 0"	92	7,893	10

HOIST	CLASS "D"	"A"
MOTOR	SWIFT LIFT	
HP/RPM	FPM	
20 / 1200	13	28
20 / 1800	13	20
30 / 1200	20	40
30 / 1800	20	30
40 / 1200	26	52
40 / 1800	26	40