

Monorail Trolley

3 TON CAPACITY

PRODUCT INFORMATION

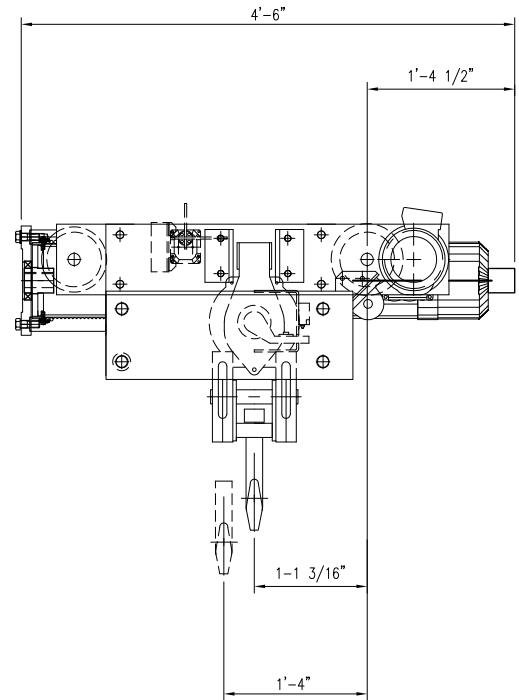
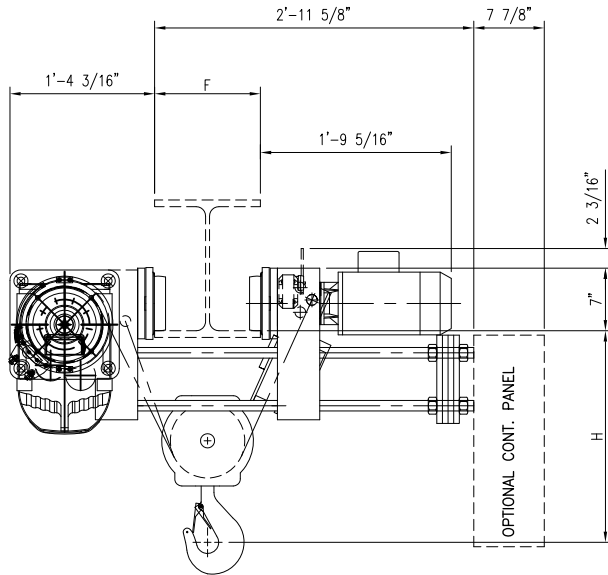
DWG. NO:

NOR4012-1423

DATE: 08/10/2016

REVISION: 1

TYPE: 23



WIRE ROPE 5/16" 6 x 36 IWRC EIP

ACECO RESERVES THE RIGHT TO MAKE CHANGES WITHOUT NOTICE.

| | | | | |
|---------------------|---------------------|----------------------|-------------------|---|
| CAPACITY | 3 Tons (6,000 lbs.) | TROLLEY SPEED | MOTOR DATA | Optional: Hoisting Speed, Trolley Speed, Lift, Power Supply, etc.; consult factory. DRUM DIA. 7.638" |
| CLASS | CMAA CLASS "D" | 60 F.P.M. | .5 HP / 1800 RPM | |
| POWER SUPPLY | 460V-3PH-60HZ | | | |

DIMENSIONAL INFORMATION

| HOIST | HOISTING | HOISTING SPEED | LIFT | WEIGHT |
|----------|----------|----------------|------|--------|
| MOTOR | SPEED | SWIFT LIFT | FEET | LBS. |
| 4 / 1800 | 16 | 24 | 23 | 800 |

| FLANGE WIDTH "F" | HEADROOM "H" |
|------------------|--------------|
| INCHES | |
| <7.87 | 19 |
| <12.00 | 23 |
| <15.98 | 27 |
| <19.68 | 31 |
| <23.62 | 35 |