

# Top Running Trolley

## 50 TON CAPACITY

### PRODUCT INFORMATION

DWG. NO:

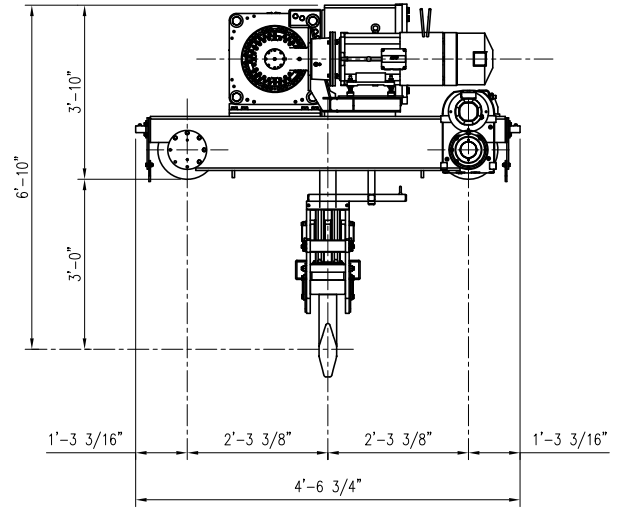
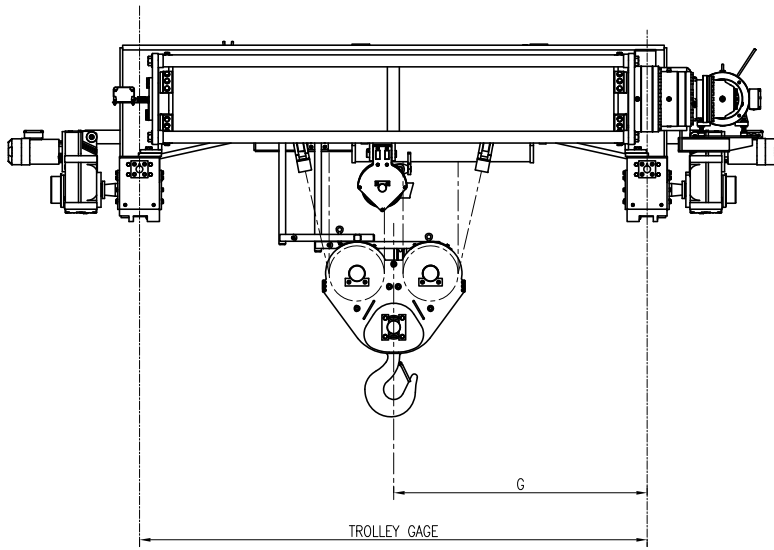
# NOR50b18

DATE: 008/09/2016

REVISION: 1

TYPE: 18

### 4 PART DOUBLE REEVING



WIRE ROPE  $\phi 3/4$ " 6 x 36 IWRC EIP

ACECO RESERVES THE RIGHT TO MAKE CHANGES WITHOUT NOTICE.

### HOIST TECHNICAL DATA

CMAA CLASS	"D"	TROLLEY SPEED	MOTOR DATA	Optional: Hoisting Speed, Trolley Speed, Lift, etc.: consult factory. DRUM DIA. 24" WHEEL DIA. 12"
POWER SUPPLY	460V-3PH-60HZ	60 F.P.M.	3 HP / 1800 RPM	
		70 F.P.M.	5 HP / 1800 RPM	
		90 F.P.M.	5 HP / 1800 RPM	

### DIMENSIONAL INFORMATION

HOIST SIZE	TROLLEY GAGE	LIFT FEET	WEIGHT LBS.	MOTOR HP/RPM	SPEED FPM	SWIFT FPM
5	5' - 0"	36	17,000	30 / 1200	8	16
6	6' - 0"	47	18,000	30 / 1800	8	12
7	7' - 0"	58	19,000	40 / 1200	11	22
8	8' - 0"	69	20,000	40 / 1800	11	16
9	9' - 0"	88	21,000	50 / 1200	13	27
10	10' - 0"	90	22,000	50 / 1800	13	20
11	11' - 0"	103	23,000	60 / 1200	16	32
12	12' - 0"	108	24,000	60 / 1800	16	24