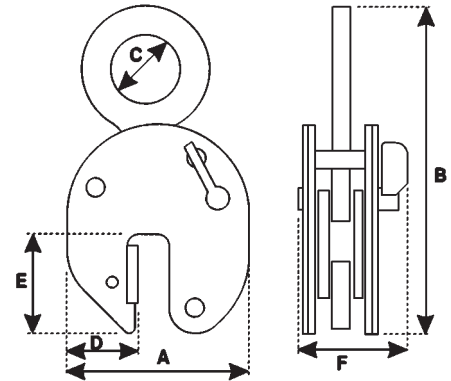


**CZ92 Universal plate clamps**

Working load limit (lbs.)*	Product code	Jaw capacity (in.)	Dimensions (inches)						Weight (lbs.)
			A	B	C	D	E	F	
1,100	695232	0-5/8	3 3/4	7 1/2	2	1 1/8	2	1 1/2	3
3,300	695233	0-3/4	5	9 1/2	2	1 7/8	2 3/4	3 3/8	7
4,400	695234	0-1 1/4	7 5/8	13 3/4	3 1/8	2 7/8	3 3/4	4 3/8	18
6,600	695235	0-1 1/4	7 5/8	14	3 1/8	2 7/8	3 3/4	4 1/2	22
8,800	695236	0-1 1/4	7 1/2	14 1/4	3 1/8	2 1/4	3 3/4	3 7/8	26 1/2
8,800	694770	1 1/4-2 3/8	9	14 1/4	3 1/8	2 1/4	3 3/4	3 7/8	40
13,200	694771	0-2	11 1/2	17 1/2	3 1/2	3 3/4	5 5/8	4 3/4	46 1/2
13,200	694772	2-4	14 1/4	17 1/4	3 1/2	3 3/4	5 5/8	4 3/4	62
17,600	694773	0-2	11 1/2	17 3/4	3 1/2	3 3/4	5 5/8	4 3/4	57 1/2
17,600	694774	2-4	14 1/4	19	3 1/2	4 1/2	5 5/8	4 3/4	70 1/2
22,000	694775	0-2	11 1/2	19 3/4	4 3/8	3 3/4	5 5/8	5 1/8	66
22,000	694776	2-4	14 1/4	19 3/4	4 3/8	4 1/2	5 5/8	5 1/8	81 1/2
26,400	694777	0-2	14 1/8	21 5/8	5 1/8	5	6 3/8	5 3/4	119
26,400	694778	2-4	18 1/8	24 1/4	5 1/8	6 7/8	6 3/8	5 3/4	139
33,000	694779	0-2	14 1/8	21 5/8	5 1/8	5	6 3/8	7 5/8	165 1/2
33,000	694780	2-4	18 1/8	14 1/4	5 1/8	6 7/8	6 3/8	7 5/8	194
44,000	694781	0-2 1/2	18 1/8	26 1/2	5 1/8	6 1/2	8 1/4	9 1/4	271
44,000	694782	2 1/2-5 1/8	22	28 1/2	5 1/8	7 5/8	8 1/4	9 1/4	300
66,000	694783	0-2 1/2	18 1/8	26 1/4	6 1/4	6 1/2	8 1/4	11 1/2	430
66,000	694784	2 1/2-5 1/8	22	28 7/8	6 1/4	7 5/8	8 1/4	11 1/2	650 1/2



**Note: The 1,100 lbs., 3,300 lbs., 4,400 lbs. and 6,600 lbs. W.L.L. units are fitted with moving jaw and fixed pads that incorporate wear indicators.**

**General Safety Note** (Vertical Plate Clamps)

- 1) DO NOT** use to lift loads that weigh less than 20% of the W.L.L.  
 e.g. 3,300 lbs. clamp should only be used for plates weighing 660-3,300 lbs.  
 e.g. 6,600 lbs. clamp should only be used for plates weighing 1,320-6,600 lbs.
- 2) Extra care** must be taken when lifting plates of less than 20% rated jaw capacity.
- 3) Excessive damage** can be quickly caused to the teeth of the moving jaw of a clamp which is continuously used to lift the same thickness of material. Clamps used for this purpose must be inspected weekly to check for wear on the 1 or 2 teeth continuously in contact with the load.

**Note:** 695232 supplied without lock.

For more information contact:  
 American Crane & Equipment Corp.  
 Authorized Distributor  
 Tel: 877-503-2972  
 Fax: 484-945-0430  
 sales@americancrane.com  
 www.americancrane.com

Lift and turn over plates in one smooth operation.

Plates can be turned over or lifted from the horizontal to the true vertical position.

Available with either standard hooking for use with existing sling hook, or with integral short chain sling for direct fitting on to the crane hook.

Hardened steel jaws for positive grip and locking mechanism.

695233, 695234 and 695235 clamps include a jaw and corresponding pad wear indicator to provide visible warning when replacement is required.

The CZ92 range of clamps can be specially reinforced to withstand frequent dragging. They can also be supplied with a heavy duty 'sharp leg' where a wedge action is required to separate plates. Price on application.

**LIFT ONE PLATE ONLY AT A TIME**

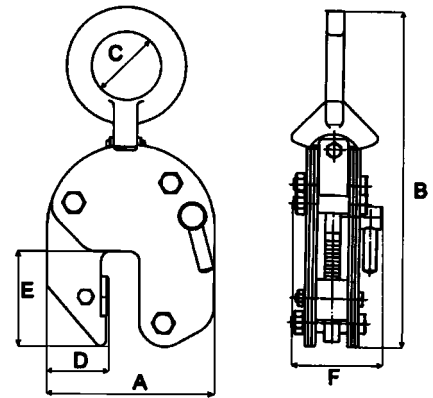
Suitable for all structural steel up to 300 Brinell surface hardness.

<b>* ⚠ WARNING</b>
<b>IMPROPER USE OF LIFTING CLAMPS MAY RESULT IN LOSS OF LOAD AND PERSONAL INJURY.</b>
<p><b>To avoid injury:</b></p> <ul style="list-style-type: none"> <li>• Inspect clamps and equipment before use.</li> <li>• Do not exceed clamp rated load.</li> <li>• Use clamps only if authorized and properly trained.</li> <li>• Do not move unbalanced load.</li> </ul>



**CY Hinged universal plate clamps**

Working load limit (lbs.)*	Product code	Jaw capacity (in.)	Dimensions (inches)						Weight (lbs.)
			A	B	C	D	E	F	
2,200	695237	0-3/4	5	10 <sup>5</sup> / <sub>8</sub>	2	2	2 <sup>3</sup> / <sub>4</sub>	3 <sup>3</sup> / <sub>4</sub>	10
4,400	695238	0-1 <sup>1</sup> / <sub>4</sub>	7 <sup>1</sup> / <sub>2</sub>	15	3 <sup>1</sup> / <sub>8</sub>	2 <sup>7</sup> / <sub>8</sub>	3 <sup>3</sup> / <sub>4</sub>	5 <sup>1</sup> / <sub>4</sub>	28 <sup>1</sup> / <sub>2</sub>
6,600	695239	0-1 <sup>1</sup> / <sub>4</sub>	7 <sup>1</sup> / <sub>2</sub>	15	3 <sup>1</sup> / <sub>8</sub>	2 <sup>7</sup> / <sub>8</sub>	3 <sup>3</sup> / <sub>4</sub>	5 <sup>1</sup> / <sub>4</sub>	30



The new CY clamp is based on our successful 92 series range of clamps and incorporates the new universal hinged hooking.

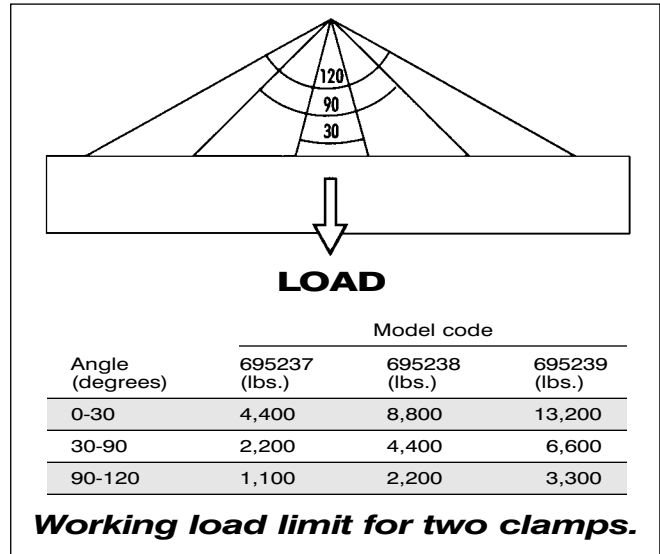
The CX and CY Hinged Universal Plate Clamps have been developed especially for the handling of plate at any angle.

The CX clamp is particularly suitable for handling fabrications because of the facility of the lifting eye and link.

**LIFT ONE PLATE ONLY AT A TIME.**

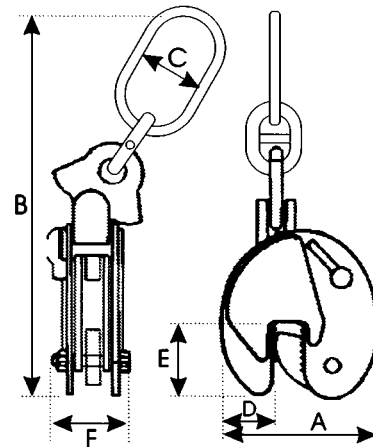
Suitable for all structural steel up to 300 Brinell surface hardness.

For stainless steel and other materials please contact our sales office.



**CX Heavy duty hinged universal plate clamps**

Working load limit (lbs.)*	Product code	Jaw capacity (in.)	Dimensions (inches)						Weight (lbs.)
			A	B	C	D	E	F	
2,200	694790	0-3/4	5 <sup>1</sup> / <sub>2</sub>	16	2 <sup>3</sup> / <sub>4</sub>	1 <sup>7</sup> / <sub>8</sub>	2 <sup>3</sup> / <sub>4</sub>	3 <sup>1</sup> / <sub>4</sub>	11
6,600	694791	0-1 <sup>1</sup> / <sub>4</sub>	7 <sup>3</sup> / <sub>4</sub>	20 <sup>1</sup> / <sub>2</sub>	2 <sup>3</sup> / <sub>4</sub>	2 <sup>5</sup> / <sub>8</sub>	3 <sup>5</sup> / <sub>8</sub>	4 <sup>3</sup> / <sub>8</sub>	26 <sup>1</sup> / <sub>2</sub>
13,200	694792	0-2	11 <sup>1</sup> / <sub>2</sub>	27 <sup>3</sup> / <sub>4</sub>	3 <sup>1</sup> / <sub>2</sub>	3 <sup>3</sup> / <sub>4</sub>	5 <sup>5</sup> / <sub>8</sub>	5 <sup>1</sup> / <sub>2</sub>	84
13,200	694793	2-4	13 <sup>1</sup> / <sub>2</sub>	27 <sup>3</sup> / <sub>4</sub>	3 <sup>1</sup> / <sub>2</sub>	3 <sup>3</sup> / <sub>4</sub>	5 <sup>5</sup> / <sub>8</sub>	7 <sup>1</sup> / <sub>2</sub>	106
17,600	694794	0-2	11 <sup>1</sup> / <sub>2</sub>	27 <sup>3</sup> / <sub>4</sub>	3 <sup>1</sup> / <sub>2</sub>	3 <sup>3</sup> / <sub>4</sub>	5 <sup>5</sup> / <sub>8</sub>	6	86
17,600	694795	2-4	13 <sup>1</sup> / <sub>2</sub>	27 <sup>3</sup> / <sub>4</sub>	3 <sup>1</sup> / <sub>2</sub>	3 <sup>3</sup> / <sub>4</sub>	5 <sup>5</sup> / <sub>8</sub>	7 <sup>7</sup> / <sub>8</sub>	112 <sup>1</sup> / <sub>2</sub>
22,000	694796	0-2	14 <sup>1</sup> / <sub>8</sub>	33 <sup>1</sup> / <sub>8</sub>	4 <sup>3</sup> / <sub>8</sub>	4 <sup>7</sup> / <sub>8</sub>	6 <sup>3</sup> / <sub>8</sub>	6 <sup>3</sup> / <sub>8</sub>	134 <sup>1</sup> / <sub>2</sub>
22,000	694797	2-4	16 <sup>1</sup> / <sub>8</sub>	33 <sup>1</sup> / <sub>8</sub>	4 <sup>3</sup> / <sub>8</sub>	4 <sup>7</sup> / <sub>8</sub>	6 <sup>3</sup> / <sub>8</sub>	8 <sup>3</sup> / <sub>8</sub>	167 <sup>1</sup> / <sub>2</sub>



**See above for loading diagram and de-rating table.**

**\* ⚠ WARNING**

**IMPROPER USE OF LIFTING CLAMPS MAY RESULT IN LOSS OF LOAD AND PERSONAL INJURY.**

**To avoid injury:**

- Inspect clamps and equipment before use.
- Do not exceed clamp rated load.
- Use clamps only if authorized and properly trained.
- Do not move unbalanced load.