

Tractor drive

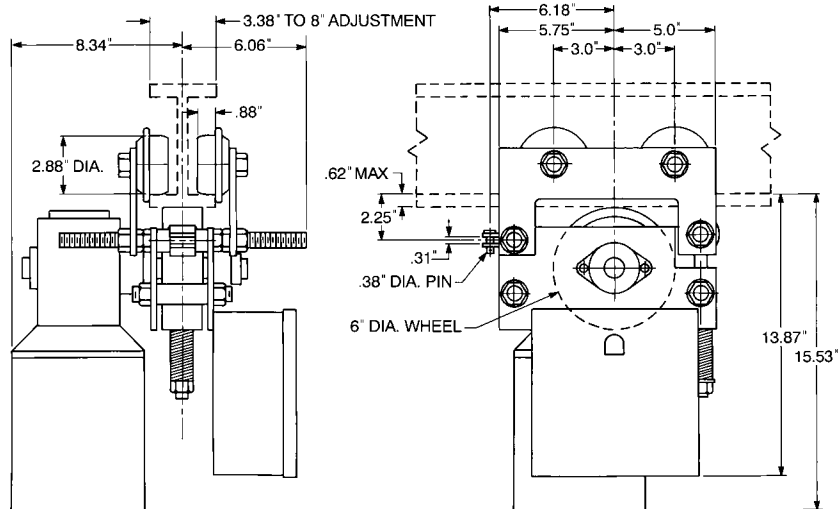
Power tractor drives push-type hoists, trolleys and underhung cranes. Easy installation without removing or modifying existing equipment. This drive also features:

- Compact design
- Capacities up to 5 tons available in 230/460-3-60 operation
- Monorail trolley track or twin unit synchronized drives available
- Direct drive with right angle worm gear reducer
- Enclosed aluminum housing for lubrication of gears and bearings
- Steel plate construction with tie-rods for easy adjustment
- Squirrel cage motor with permanently lubricated bearings
- Fully machined trolley wheels with universal tread operate on tapered or flat flange beams
- Adjusts to standard I-beams or flat flange beams up to 8 inches wide
- Standard magnetic reversing contactor with mechanical interlock inside NEMA 1 enclosure
- One-year warranty
- Made in U.S.A.



Options

- 575 volt 3 phase 60 hertz operation
- 2, 4, 6 & 8 button push-button station
- Additional push-button cable length (10' standard)
- NEMA 12, 4 or 4X control enclosures
- Motor brake
- Soft start (recommended for speeds above 70 F.P.M.)
- Two speed or variable controls
- Transformer for 115 volt control power
- Tow bar
- For other beams, options or custom designs, consult factory



Rated capacity* (tons)	Product code	Speed (F.P.M.)	Std. beam size (in.)	Min. radius curve (in.)	Max. flange thickness (in.)	Approx. shipping wt. (lbs.)
1	TD 235	35	3.38-8	36	.62	110
1	TD 255	55	3.38-8	36	.62	110
1	TD 270	70	3.38-8	36	.62	110
1	TD 2105	105	3.38-8	36	.62	110
1½	TD 335	35	3.38-8	36	.62	110
1½	TD 355	55	3.38-8	36	.62	110
1½	TD 370	70	3.38-8	36	.62	110
1½	TD 3105	105	3.38-8	36	.62	110
2½	TD 535	35	3.38-8	36	.62	110
2½	TD 555	55	3.38-8	36	.62	110
2½	TD 570	70	3.38-8	36	.62	110
3	TD 635	35	3.38-8	36	.62	110
3	TD 655	55	3.38-8	36	.62	110
5	TD 1035	35	3.38-8	36	.62	110